

**U. S. Public Land Corner
Maintenance**

112
Corner: N1/4 Sec. 31, T19N-R4W
21904300020


<u>Date</u>	<u>Crew</u>	<u>Monument type</u>
April 14, 2021	Zachariah P. Dechant Gary L. Dechant	Found Harrison intact, 3' north center of Canary Ave, 8' west of fence running north of road

References:

- 1) Set 2' section steel fence post, near r/w fence
- 2) Set 2' section steel post, in field
- 3) Set 2' section steel post, in field
- 4) Set 2' section steel post, 8' SE of 14" White Pine

<u>Bearing</u>	<u>Distance</u>
N23E	26.16'
S52E	55.39'
S23W	41.84'
N52W	70.80'

Compass bearings.
Corner & reference markers set on straight lines.

Gary L. Dechant

April 27, 2021

I, William C. Jung, do hereby certify that on the 15th day of August 1983, I found ~~(evidence)~~ (no evidence) of the North 1/4 corner of Section 31, T 19 N, R 4 W Fourth Principal Meridian, and I re-established said corner according to the Wisconsin Statutes as shown and described hereon.

Dated this 20th day of Sept. 1983.

William C. Jung

Deputy County Surveyor, R.L.S. 1323
Title

History of corner establishment since Original Government Survey
In his notes of December, 1903, Fred Holden shows a stake at this corner.

Description of corner evidence found:

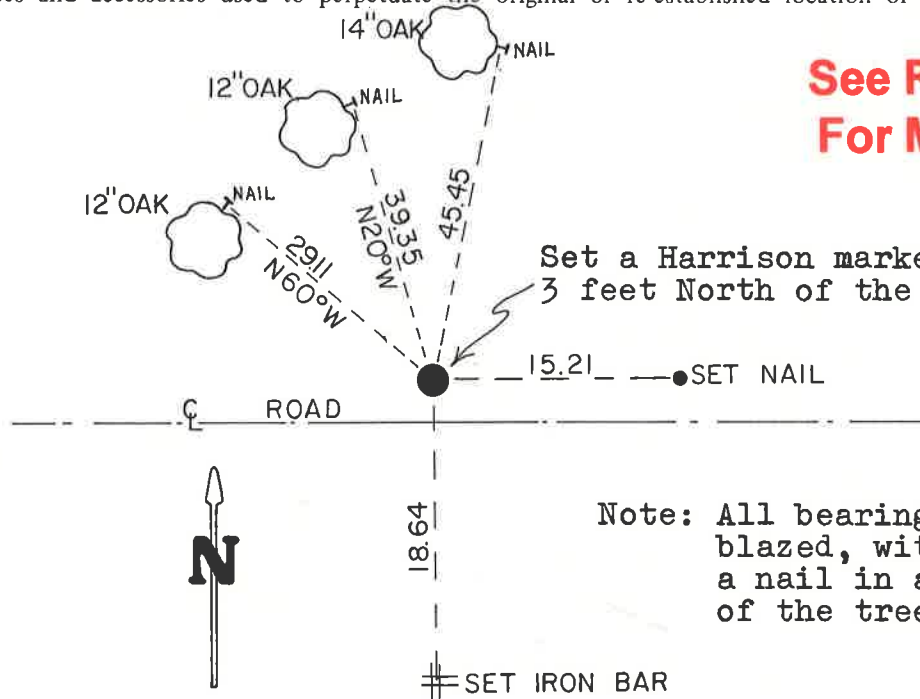
I set this corner on line between the section corners at the NE and NW, and at a distance from the occupied corner at the N1/16NE equal to the distance between the latter N1/16NE and the NE section corner. I searched for corner evidence at this North 1/4 but found none. This corner appears to fit an old tree line going to the North in which I found some old wire. About 6 feet to the East of the corner is a newer fence going to the North. The newer fence does not appear to have replaced an older fence. Setting the corner by single proportionate measurement would not have fit the existing conditions at all. As set this corner best fits the evidence.

Description of corner and witness monuments, references and accessories used to perpetuate the original or re-established location of this corner: the evidence.

Witnesses to corner location:

William C. Jung

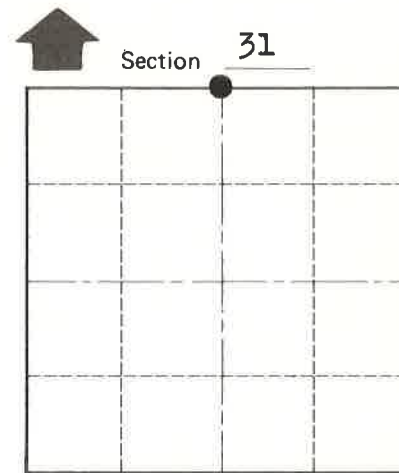
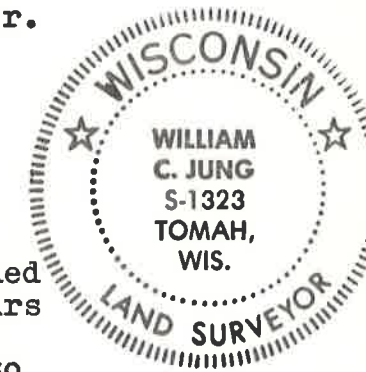
Dallas Wilhite



See Reverse Side For Maintenance

Set a Harrison marker, down 1", 3 feet North of the centerline.

Note: All bearing trees are double blazed, with each distance to a nail in a hack on the side of the tree.



• = LOCATION CORNER

T 19 N R 4 W
WISCONSIN

**Approved: HARLEY A. SIME
MONROE CO. SURVEYOR**

SURVEY CONTROL ORDER

Horizontal	_____
Vertical	_____

WISCONSIN COORDINATE SYSTEM

Corner	East (X)	North (Y)	Elevation (Z)	Zone
Control Sta. Name				

City, Village or Town Little Falls
County of Monroe
Wisconsin

COUNTY SURVEYOR FORM NO. 1