

**U. S. Public Land Corner
Maintenance**

111

Corner: NW Sec. 32, T19N-R4W

21904300000

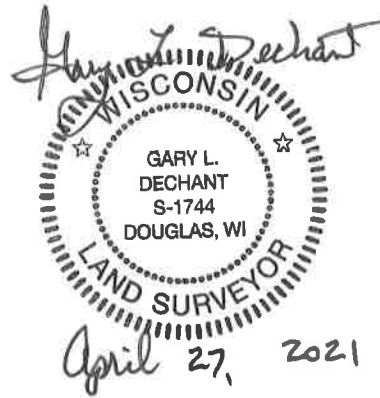
<u>Date</u>	<u>Crew</u>	<u>Monument type</u>
April 12, 2021	Zachariah P. Dechant Gary L. Dechant	Found Harrison intact, down 5", center of Canary Ave, in line with fence to the south

References:

	<u>Bearing</u>	<u>Distance</u>
1) Set 2' section steel fence post, in field, down 10"	N30E	42.57'
2) Set 2' section steel post, in field, down 10"	S20E	44.48'
3) Set 2' section steel post, 4' NE of 12" Black Oak	S30W	36.50'
4) Set 2' section steel post, 4' SE of 10" White Pine	N20W	67.98'

Compass bearings.

Corner & reference markers set on straight lines.



I, William C. Jung, do hereby certify that on the 9th day of November 19 79, I found (evidence) ~~(no evidence)~~ of the Northwest corner of Section 32, T 19 N, R 4 W, Fourth Principal Meridian, and I re-established said corner according to the Wisconsin Statutes as shown and described hereon.

Dated this 3rd day of Feb. 19 81.

William C. Jung

William C. Jung, R.L.S. 1323

Title

History of original corner establishment:

Schroeder (?) was at this corner in May of 1886. Holden was at this corner in December of 1903.

Description of corner evidence found:

I accepted the occupied corner as the best available evidence of the original government corner and monumented this point with a Harrison marker. This location fits surrounding section measurements very well.

See Reverse Side For Maintenance

Approved: HARLEY A. SIME
MONROE CO. SURVEYOR

Description of corner and witness monuments, references and accessories used to perpetuate the original or re-established location of this corner:

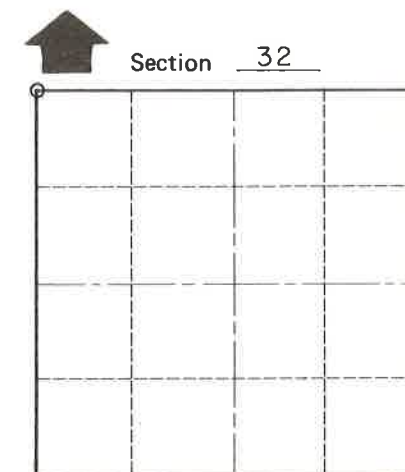
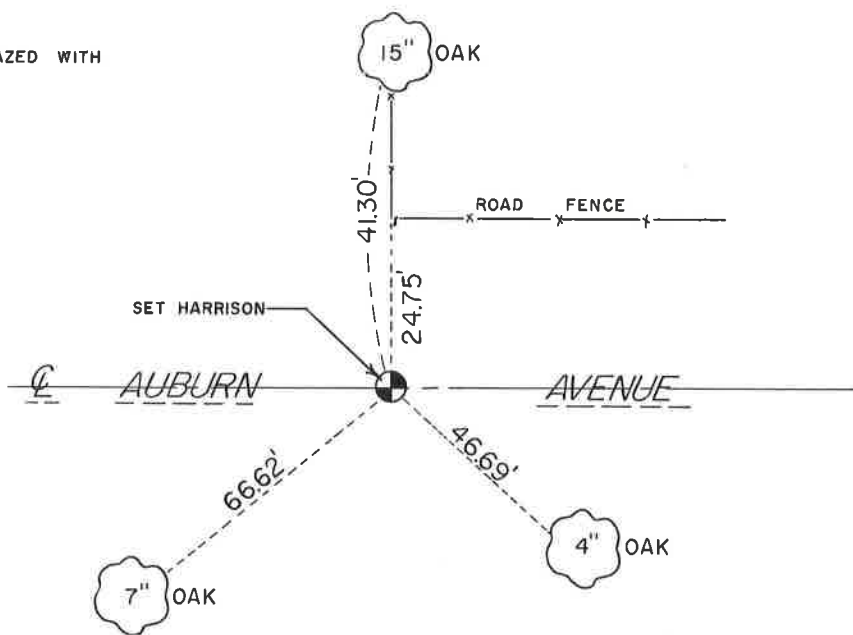
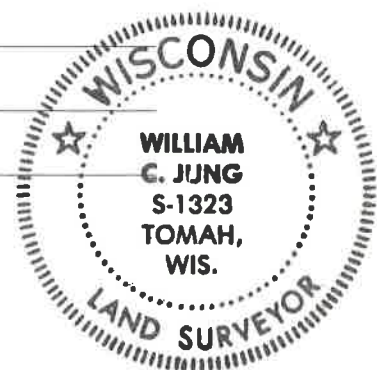
NOTE: TREES DOUBLE BLAZED WITH NAIL & CAP SET

Witnesses to corner location:

Jung

Pietz

Tormoen



O = LOCATION CORNER

T 19 N R 4 W

WISCONSIN

SURVEY CONTROL ORDER

Horizontal	_____
Vertical	_____

WISCONSIN COORDINATE SYSTEM

Corner	East (X)	North (Y)	Elevation (Z)	Zone
Control Sta. Name				

_____ or Town Little Falls

County of Monroe

COUNTY SURVEYOR FORM NO. 1