

**U. S. Public Land Corner  
Maintenance**

# 110  
Corner: N1/4 Sec. 32, T19N-R4W  
21904290020

<u>Date</u>	<u>Crew</u>	<u>Monument type</u>
April 12, 2021	Zachariah P. Dechant Gary L. Dechant	Found Harrison intact, 40' west of fence running north of road, 8' south of road center line

References:

	<u>Bearing</u>	<u>Distance</u>
1) Set 2' section steel fence post, 6' SW 12" Burr Oak	N60E	109.41'
2) Set 2' section steel post, center of field entrance	S40E	43.10'
3) Set 2' section steel post in field, down 10"	S60W	58.30'
4) Set 2' section steel post 1' south of r/w fence	N40W	47.45'

Compass bearings.

Corner & reference markers set on straight lines.



I, William C. Jung, do hereby certify that on the 13<sup>th</sup> day of November 1979, I found ~~(evidence)~~ (no evidence) of the North 1/4 corner of Section 32, T 19 N, R 4 W, Fourth Principal Meridian, and I re-established said corner according to the Wisconsin Statutes as shown and described hereon.

Dated this 3<sup>rd</sup> day of Feb. 1981.

*William C. Jung*

William C. Jung, R.L.S. 1323

Title

**Approved: HARLEY A. SIME**

**MONROE CO. SURVEYOR**

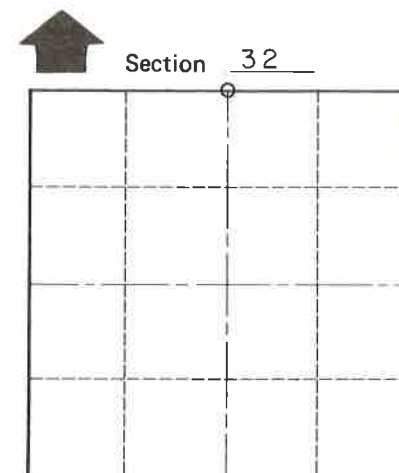
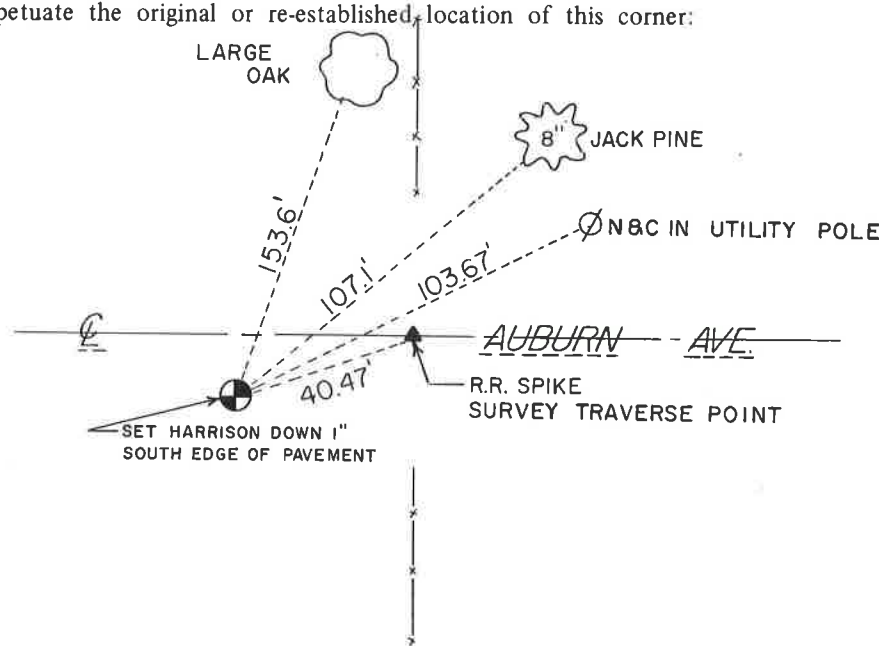
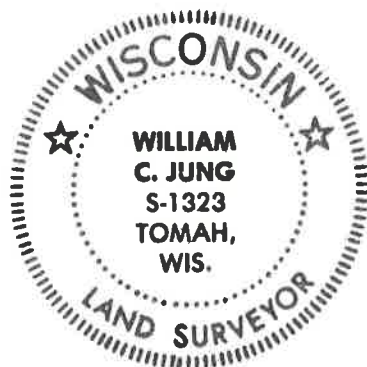
Description of corner and witness monuments, references and accessories used to perpetuate the original or re-established location of this corner:

Witnesses to corner location:

Jung

Hayden

NOTE: TREES DOUBLE BLAZED WITH NAIL & CAPS SET



T 19 N R 4 W  
WISCONSIN

**See Reverse Side For Maintenance**

History of original corner establishment:  
**Schroeder (?) was at this corner in May of 1886.**

Description of corner evidence found:

**Set the corner equidistant and on line between the section corners.**

COUNTY SURVEYOR FORM NO. 1

SURVEY CONTROL ORDER

Horizontal	_____
Vertical	_____

WISCONSIN COORDINATE SYSTEM

Corner	East (X)	North (Y)	Elevation (Z)	Zone
Control Sta. Name				

\_\_\_\_\_ or Town Little Falls

County of Monroe