

**U. S. Public Land Corner
Maintenance**

109
Corner: NW Sec. 33, T19N-R4W
21904290000

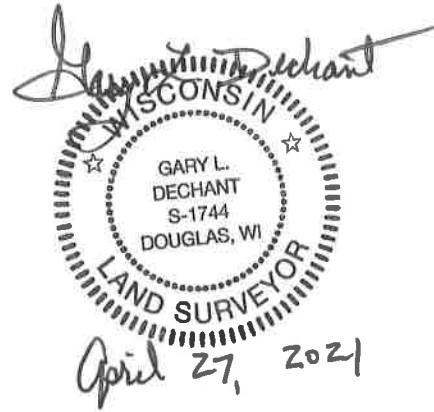
<u>Date</u>	<u>Crew</u>	<u>Monument type</u>
April 14, 2021	Zachariah P. Dechant Gary L. Dechant	Found Harrison intact, center of Canary Ave 172' east of driveway 5925 Canary Ave

References:

	<u>Bearing</u>	<u>Distance</u>
1) Set 2' section steel fence post, 18' SW of 18" Red Pine	N31E	49.32'
2) Set 2' section steel post in field, down 10"	S27E	42.86'
3) Set 2' section steel post, 10' SE of 20" triple Cedar	S31W	40.68'
4) Set 2' section steel post	N27W	34.13'

Compass bearings.

Corner & reference markers set on straight lines.



I, William C. Jung, do hereby certify that on the 12th day of April 1978, I found (evidence) (~~no evidence~~) of the NW corner of Section 33, T 19 N, R 4 W, Fourth Principal Meridian, and I re-established said corner according to the Wisconsin Statutes as shown and described hereon.

Dated this 21st day of Nov. 1978.

William C. Jung, R.L.S. 1323

Crew Chief, County Surveyor's
Title Office

History of original corner establishment:

No known recorded history since the original government survey.

Description of corner evidence found:

Accepted the occupied corner as best available evidence.

**See Reverse Side
For Maintenance**

COUNTY SURVEYOR FORM NO. 1

Description of corner and witness monuments, references and accessories used to perpetuate the original or re-established location of this corner:

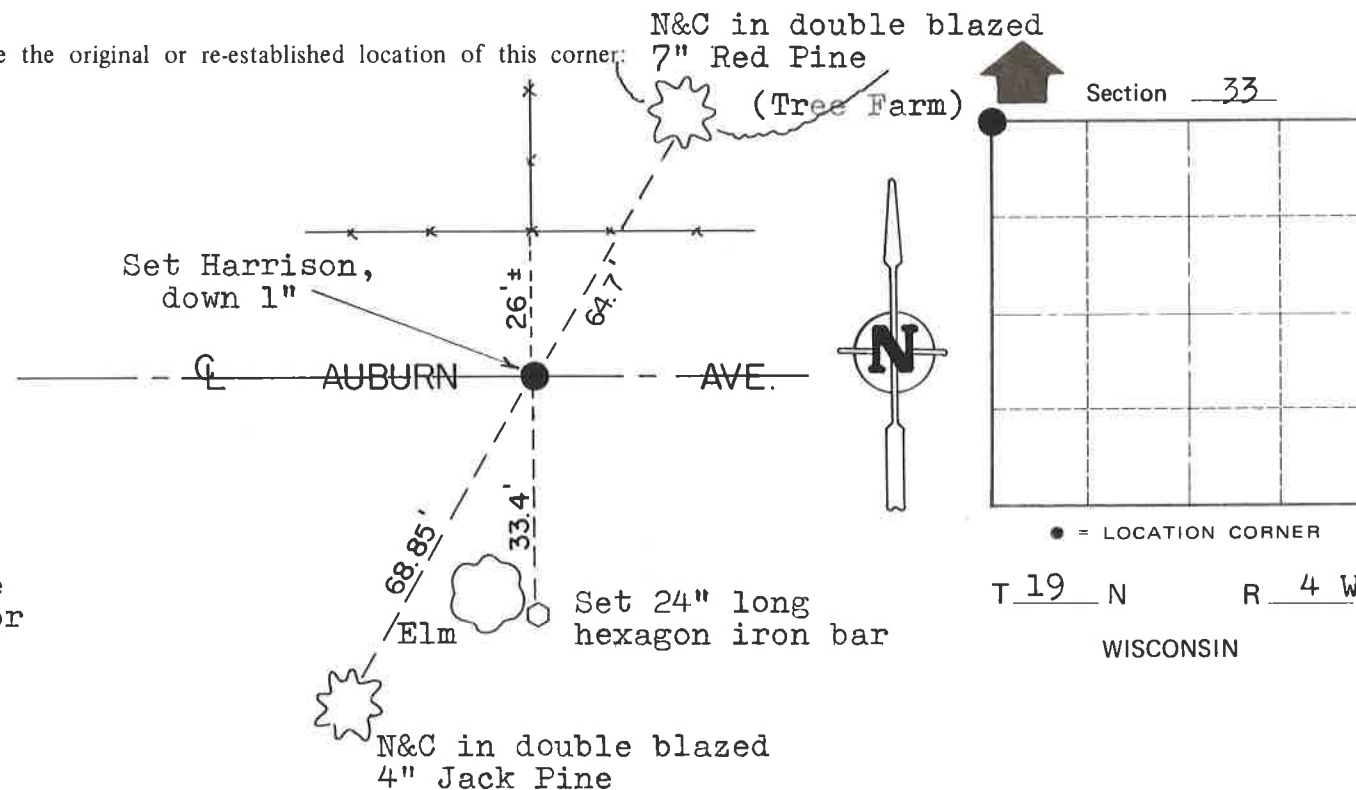
Witnesses to corner location:

W. Jung

G. Dechant



Approved by: Harley A. Sime
County Surveyor



SURVEY CONTROL ORDER

Horizontal	_____
Vertical	_____

WISCONSIN COORDINATE SYSTEM

Corner	East (X)	North (Y)	Elevation (Z)	Zone
Control Sta. Name				

City, Village or Town Little Falls

County of Monroe