

# 108

**U. S. Public Land Corner**

**Corner: N1/4 Sec. 33, T19N-R4W**

**Maintenance**

**21904280020**

<u>Date</u>	<u>Crew</u>	<u>Monument type</u>
April 12, 2021	Zachariah P. Dechant Gary L. Dechant	Found Harrison, top broke off, 21' north center of Canary Ave, down 6".

**References:**

	<u>Bearing</u>	<u>Distance</u>
1) Set 1¼"x 24 " iron pipe 4' SW 12" Ash	N63E	32.48'
2) Set 1¼"x24" iron pipe 29' north center of road	N85W	52.94'
3) Set 1¼"x24" iron pipe, 3' SE of 8" Locust"	N42W	29.19'
4) Set 1¼"x24" iron pipe 3' SSE of 8" Locust	N20W	37.64'

Compass bearings.



I, William C. Jung, do hereby certify that on the 12th day of April 1978, I found ~~(evidence)~~ (no evidence) of the N<sup>1/4</sup> corner of Section 33, T 19 N, R 4 W, Fourth Principal Meridian, and I re-established said corner according to the Wisconsin Statutes as shown and described hereon.

Dated this 11th day of Dec. 1978.

William C. Jung, R.L.S. 1323  
~~Crew Chief, County Surveyor's~~  
 Office

History of original corner establishment:

No known recorded history since the original government survey.

Description of corner evidence found:

Set the corner on line with and equidistant between the section corners.

**See Reverse Side  
For Maintenance**

Description of corner and witness monuments, references and accessories used to perpetuate the original or re-established location of this corner:

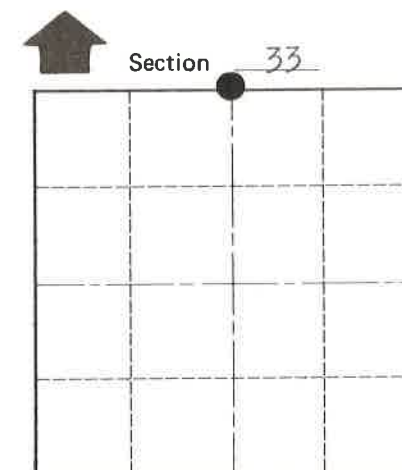
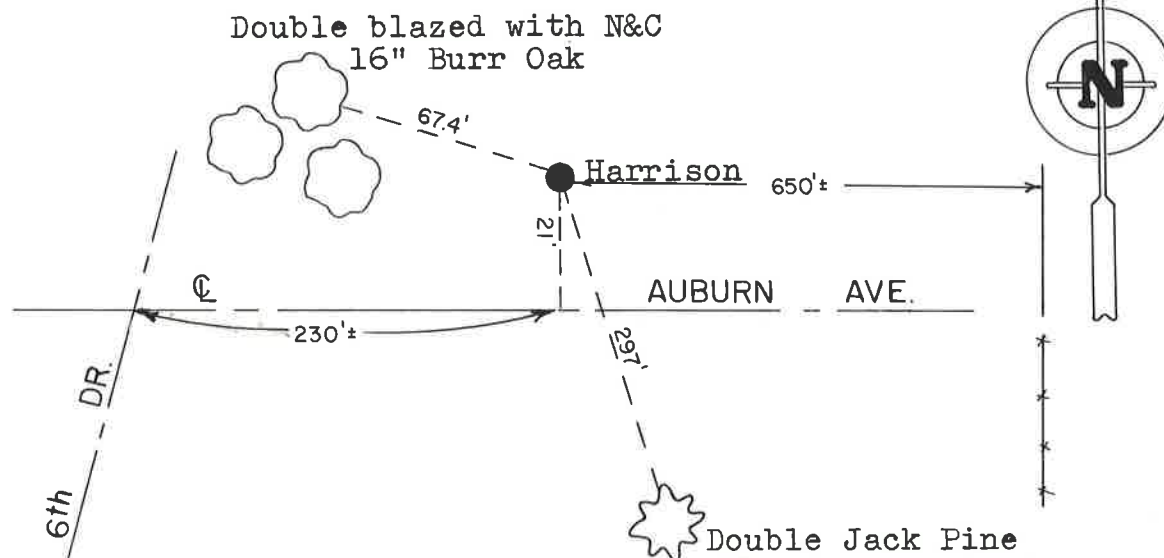
Set Harrison flush on north side of ditch.  
 Set 2 1/2" Honey Locust post 1' east of Harrison.

Witnesses to corner location:

W. Jung  
G. Dechant



Approved by: Harley A. Sime  
 County Surveyor



• = LOCATION CORNER  
 T 19 N R 4 W  
 WISCONSIN

COUNTY SURVEYOR FORM NO. 1

SURVEY CONTROL ORDER

Horizontal	_____
Vertical	_____

WISCONSIN COORDINATE SYSTEM

Corner	East (X)	North (Y)	Elevation (Z)	Zone
Control Sta. Name				

City, Village or Town Jack Pine Little Falls  
 County of Monroe