

# 78

**U. S. Public Land Corner  
Maintenance**

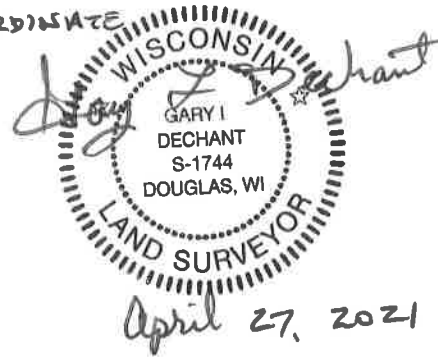
**Corner: E1/4 Sec. 22, T18N-R4W  
21804222000**

<u>Date</u>	<u>Crew</u>	<u>Monument type</u>
April 7, 2021	Al Hoff Gary L. Dechant	Existing Harrison intact at remains of fence corner. Set sign 1' south. Lies south of Two Stone bluffs. Verified from 1996 BT's.

**References:**

	<u>Bearing</u>	<u>Distance</u>
1) Set 2' section of steel fence post, 4'SW of 12" Black Oak, 1996 BT	N30°07'21E	27.30'
2) Set 2' section of steel fence post, 4' NW of 12" Hickory	S67°50'17"E	18.67'
3) Set 2' section of steel fence post, 4' NE of 10" White Oak	S21°49'19"W	33.17'
4) Set 2' section steel fence post, 4' NE of 4" Maple	S51°15'08"W	36.17'

BEARINGS REFERENCED TO  
MONROE COUNTY COORDINATE  
SYSTEM.



April 27, 2021

I, Lawrence A. Feddersen, do hereby certify that on the twentythird day of April 19 96, I found ~~(evidence) (or evidence)~~ of the East  $\frac{1}{4}$  corner of Section 22, T 18 N, R 4W Fourth Principal Meridian, and I re-established said corner according to the Wisconsin Statutes as shown and described hereon.

Dated this 29 day of April 19 96.

Lawrence A. Feddersen  
Registered Land Surveyor  
Title

History of corner establishment since Original Government Survey

No record of re-established corner.

Description of corner evidence found:

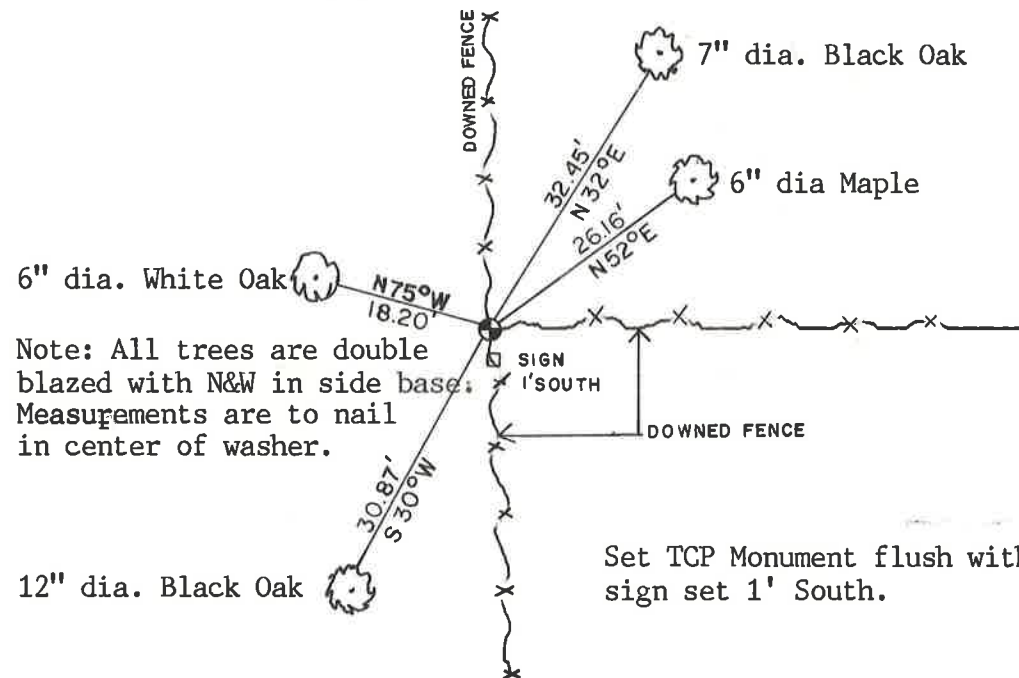
Accepted a 3 way downed fence as best possible evidence.

See Reverse Side  
For Maintenance

Description of corner and witness monuments, references and accessories used to perpetuate the original or re-established location of this corner:

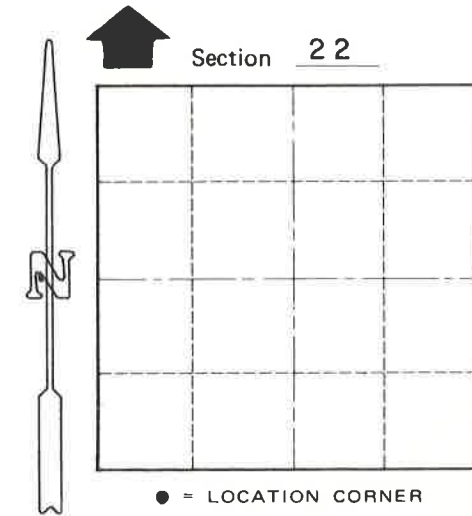
Witnesses to corner location:

Lawrence A. Feddersen  
Timothy J. Jeatran  
Harold A. Haberlin



Note: All trees are double blazed with N&W in side base. Measurements are to nail in center of washer.

Set TCP Monument flush with ground with sign set 1' South.



T 18 N R 4W  
WISCONSIN

COUNTY SURVEYOR FORM NO. 1

SURVEY CONTROL ORDER

Horizontal	_____
Vertical	_____

WISCONSIN COORDINATE SYSTEM

Corner	East (X)	North (Y)	Elevation (Z)	Zone
Control Sta. Name				

City, Village or Town of Sparta  
County of Monroe