

**U. S. Public Land Corner
Maintenance**


130
Corner: S1/4 Sec. 32, T16N-R1W
21601320020

<u>Date</u>	<u>Crew</u>	<u>Monument type</u>
April 26, 2021	Zachariah P. Dechant Gary L. Dechant	Existing Harrison, down 6", placed rectangular concrete slab over Harrison

References:

	<u>Bearing</u>	<u>Distance</u>
1) Set 1½"x24" iron pipe in line with NW corner Martin warehouse	S73E	23.73'
2) Set 1½"x24" iron pipe 4' east of 14" Red Pine	S13W	41.31'
3) Set 1½"x24" iron pipe 3' north of NE corner concrete block bldg.	S85W	26.46'
4) Set 1½"x24" iron pipe 32' north of NE corner concrete block bldg. and on line with center of roadway running west in ballpark	N50W	37.68'
5) Existing 3/4" round iron bar 16' north of power pole	North	52.75'

Compass bearings.

Gary L. Dechant

April 27, 2021

I, Harley A. Sime, do hereby certify that on the 17th day of March 19 78, I found evidence ~~(no evidence)~~ of the S 1/4 corner of Section 32, T 16 N, R 1 W Fourth Principal Meridian, and I re-established said corner according to the Wisconsin Statutes as shown and described hereon.

Dated this 20th day of March 19 78.

Harley Sime

County Surveyor

Title

History of original corner establishment:

No known recorded history since the original government survey.

Description of corner evidence found:

D. Marten set a Harrison Monument as the corner in an existing N-S fence line in June of 1973. Also a reference pipe was set beside the Harrison, pipe is 2" in diameter and left up 30".

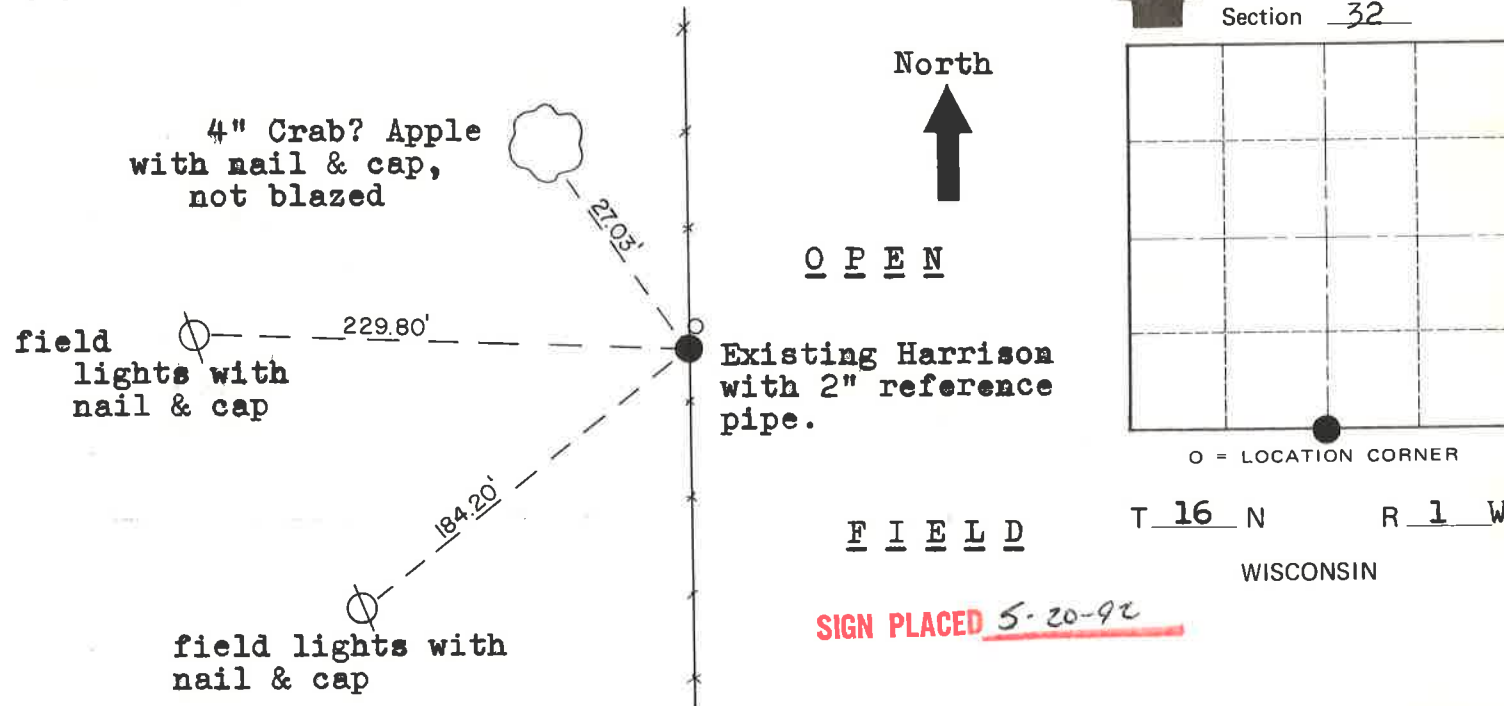
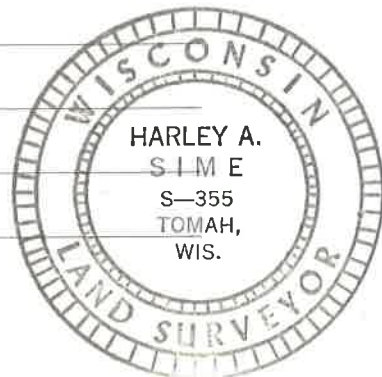
See Reverse Side For Maintenance

Description of corner and witness monuments, references and accessories used to perpetuate the original or re-established location of this corner:

Witnesses to corner location:

C. Pietz, Crew Chief

G. Dechant



SURVEY CONTROL ORDER

Horizontal _____

Vertical _____

WISCONSIN COORDINATE SYSTEM

Corner	East (X)	North (Y)	Elevation (Z)	Zone
Control Sta. Name				

City, Village or Town Wilton

County of Monroe

COUNTY SURVEYOR FORM NO. 1