

**U.S. PUBLIC LAND CORNER
MAINTENANCE**

14

**Corner ID: W1/4 Sec.6, T19N-R1W
21901010000**

<u>DATE</u>	<u>CREW</u>	<u>MONUMENT INFO</u>	<u>Bearing</u>	<u>Distance</u>
August 19, 2020	Zachariah P. Dechant Gary L. Dechant	Found triangular stone (+), up 7" . Existing 1 1/4" round iron bar on east side and 1" round iron bar on west side of stone. Set sign 1' west.		
1) Set 2' section of steel post, 4' SW of 12" White Oak			N55E	17.08'
2) Set 2' section of steel post, 4' NW of 13" White Oak (1980 BT)			S72E	33.13'
3) Set 40d nail on east side of wood post of memorial			N45W	4.45'
4) Set 2' section of steel post, 4' SE of 4" White Oak			N12W	22.50'

According to the DOT right of way maps for Interstate "94", this corner was not shown as found. DOT maps show the corner much closer to the east bound concrete lanes. In 1980, Harley A. Sime, county surveyor at the time, sent a crew into the interstate median to search for the stone of record set by Blencoe. The crew consisted of Malcom Scott Sowers, Todd Tormoen and myself. The "rookie" Todd Tormoen found the stone and let out a yell to let us know. He was excited like a kid in a candy store.

Coordinates: 455495.1670
694136.3133



I, Harley A. Sime, do hereby certify that on the 20th day of June 1980, I found (evidence) ~~(no evidence)~~ of the W¹/₄ corner of Section 6, T 19 N, R 1 W Fourth Principal Meridian, and I re-established said corner according to the Wisconsin Statutes as shown and described hereon.

Dated this 5th day of Jan. 1981.

History of corner establishment since Original Government Survey

Blencoe shows a stone at this corner.

Description of corner evidence found:

Found a triangular granite stone (Blencoe's) and set iron bars on the E & W sides of the stone.

Approved: HARLEY A. SIME
MONROE CO. SURVEYOR
Title

See Reverse Side For Maintenance

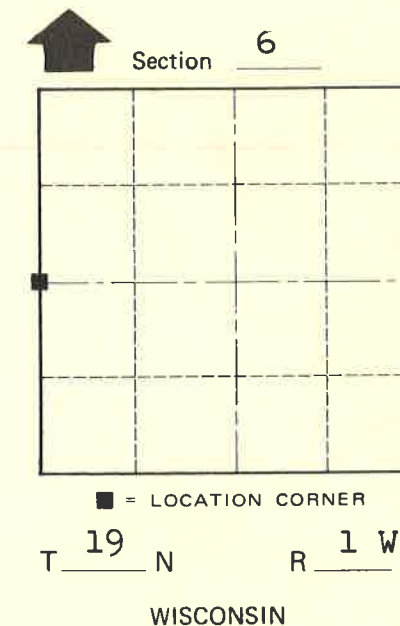
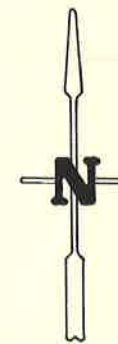
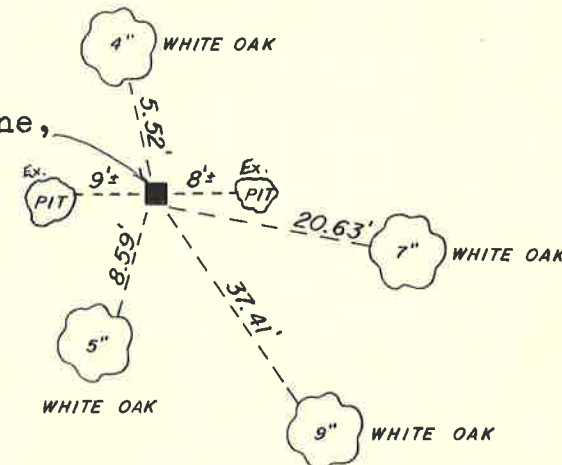
COUNTY SURVEYOR FORM NO. 1

Description of corner and witness monuments, references and accessories used to perpetuate the original or re-established location of this corner:

Witnesses to corner location:

- G. Dechant
- T. Tormoen
- S. Sowers

Existing Triangular stone, up 11". Set 1 1/4"x30" iron bar on E. side of stone and a 1" iron bar on W. side of stone. Also left old ax and handle and two pennies.



SURVEY CONTROL ORDER

Horizontal	_____
Vertical	_____

WISCONSIN COORDINATE SYSTEM

Corner	East (X)	North (Y)	Elevation (Z)	Zone
Control Sta. Name				

(All trees double blazed with N&C's set)

City, Village or Town Lincoln
 County of Monroe