

**U. S. Public Land Corner
Maintenance**

104

Corner: N1/4 Sec. 35, T17N-R4W

21704260020

<u>Date</u>	<u>Crew</u>	<u>Monument type</u>
March 17, 2021	Zachariah P. Dechant Gary L. Dechnat	Existing 2" iron pipe fence corner post set in concrete, in remnants of east-west and North fences. Set sign 1' east.

References:

	<u>Bearing</u>	<u>Distance</u>
1) Set 2' section of steel fence post, 4' SW of 4" Black Cherry	N48E	42.50'
2) Set 2' section of steel fence post, 4' NW of 8" Red Oak	S60E	27.70'
3) Set 2' section of steel fence post, 4' north of 3" Cedar	South	19.65'
4) Set 2' section of steel fence post, 4' SE of 8" Red Oak	N35W	26.65'
5) Existing 3/4" round iron bar eastside of stone (1975 tie)	West	33.04' (33.00')

Two northern trees double blazed.



March 18, 2021

I, Harley A. Sime, do hereby certify that on the 9 day of September 1975, I found (evidence) ~~(no evidence)~~ of the N 1/4 corner of Section, T 17 N, R 4W Fourth Principal Meridian, and I re-established said corner according to the Wisconsin Statutes as shown and described hereon.

Dated this 23 day of Jan. 1976.

Harley A. Sime
County Surveyor
Title

History of original corner establishment:

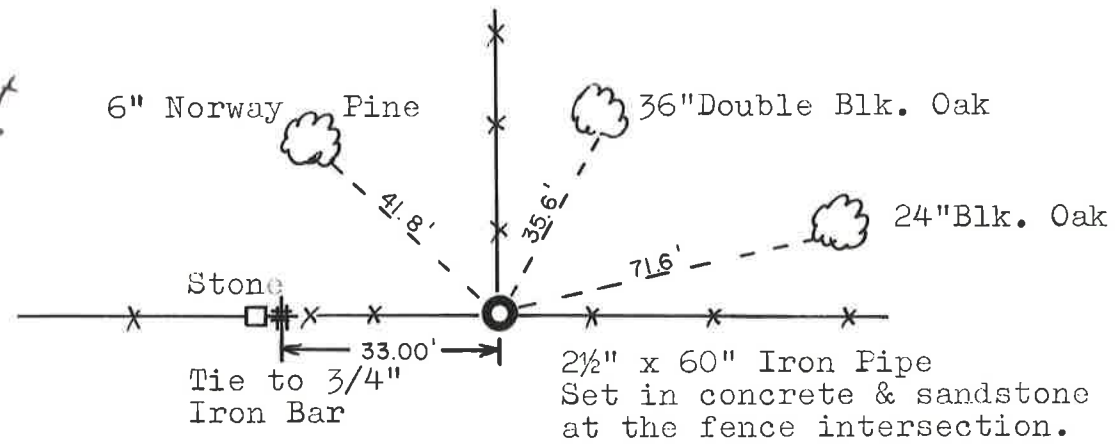
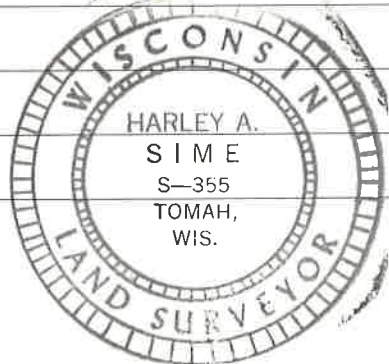
Fred Holden set a 6"x6"x12" red sandstone with "x" 10 Aug. 1903.

Description of corner evidence found:

We did not find the stone on record at this corner; instead we found a 2 1/2"x60" iron pipe in a 3-way fence corner. We talked to Mr. Frank Mess, an elderly gentleman who has lived at his present residence for many years and is a landowner on who property line this corner falls, stated that there is a stone beneath the present fence corner, and that the iron pipe was set directly over the stone. We obtained a signed statement from him & witnessed by Douglas J. Malliet and August L. Lueck as to the correct original location of the present corner location. Mr. Mess's signed statement is filed in the county field notes for the Town of Sparta.

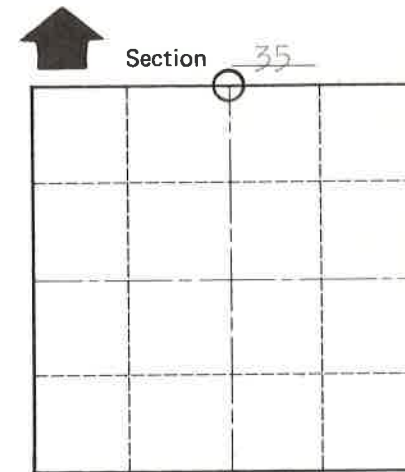
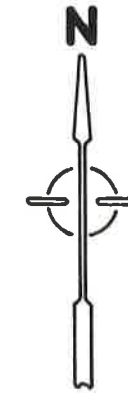
Description of corner and witness monuments, references and accessories used to perpetuate the original or re-established location of this corner:

Witnesses to corner location: Douglas J. Malliet
D. Malliet - Crew Chief, R.L.S.
A. Lueck



*All trees blazed and n&c set.

Stone 2' below surface.



O = LOCATION CORNER

T 17 N R 4W
WISCONSIN

See Reverse Side For Maintenance

COUNTY SURVEYOR FORM NO. 1

SURVEY CONTROL ORDER

Horizontal	_____
Vertical	_____

WISCONSIN COORDINATE SYSTEM

Corner	East (X)	North (Y)	Elevation (Z)	Zone
Control Sta. Name				

City, Village or Town Sparta

County of Monroe