

41801132020

I, William C. Jung, do hereby certify that on the 3rd day of June 1982, I found (evidence) ~~(no evidence)~~ of the Center 1/4 corner of Section 13, T18 N, R1 E Fourth Principal Meridian, and I re-established said corner according to the Wisconsin Statutes as shown and described hereon.

Dated this 22nd day of Feb. 1983.

William C. Jung
Deputy County Surveyor
Title

History of corner establishment since Original Government Survey
In 1961 Harley Sime either found or set an iron pipe at this corner. Duane Marten's maps, dated October of 1973 and February of 1974, both show a 2" iron pipe at this corner.

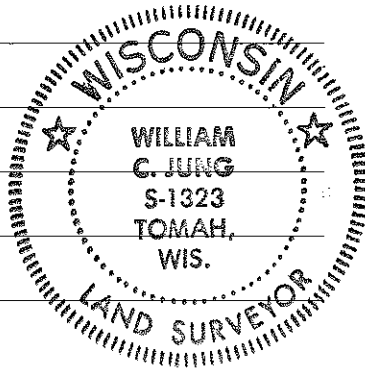
Description of corner evidence found:

I found an iron pipe near the occupied corner. This corner is at the true Center 1/4 Corner.

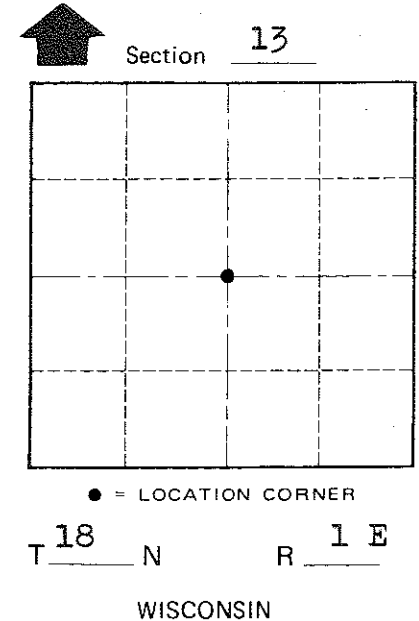
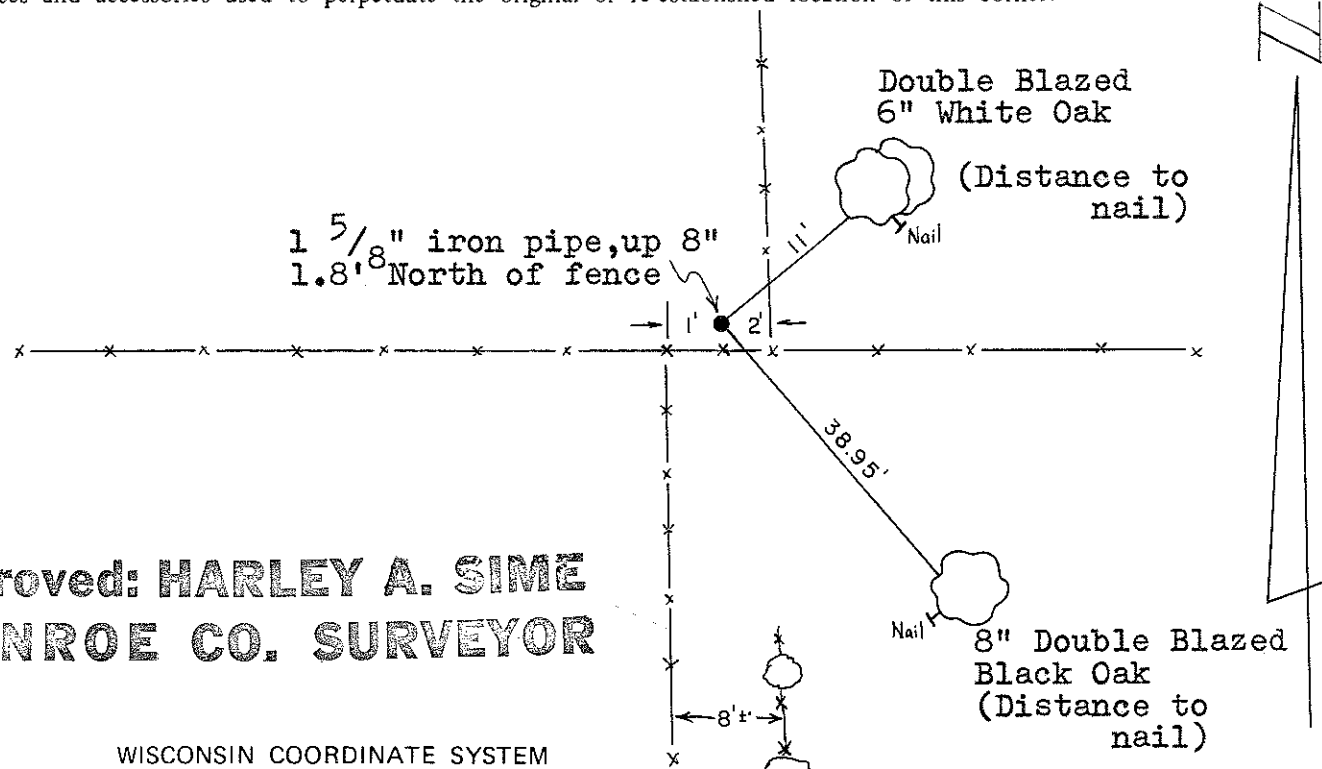
Description of corner and witness monuments, references and accessories used to perpetuate the original or re-established location of this corner:

Witnesses to corner location:

William Jung
Bryan Meyer



Approved: **HARLEY A. SIME**
MONROE CO. SURVEYOR



COUNTY SURVEYOR FORM NO. 1

SURVEY CONTROL ORDER

Horizontal	_____
Vertical	_____

WISCONSIN COORDINATE SYSTEM

Corner	East (X)	North (Y)	Elevation (Z)	Zone
Control Sta. Name				

City, Village or Town Byron
County of Monroe