

**U. S. Public Land Corner  
Maintenance**

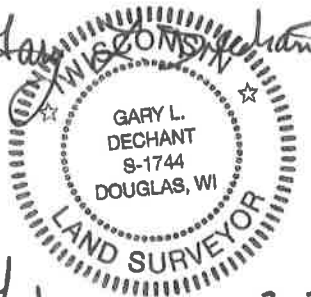
116  
Corner: E1/4 Sec. 32, T18N-R1E  
41801322000

<u>Date</u>	<u>Crew</u>	<u>Monument type</u>
February 19, 2021	Zachariah P. Dechant Gary L. Dechant	Harrison intact, set sign 1' south In remnants of fence corner

References:

	<u>Bearing</u>	<u>Distance</u>
1) Set 2' section T post, 4' SW of 12" Maple	N40E	51.24'
2) Set 2' section T post, 4' west of 7" Maple	N80E	38.09'
3) Set 2' section T post, 4' NE of 2" White Pine	S41W	60.83'
4) Set 2' section T post, 4' SE of 8" Maple	N46W	30.75'

Bearings maybe slightly off due possible compass malfunction.

*Gary L. Dechant*  
  
*February 23, 2021*

CERTIFICATE

I, Lawrence A. Feddersen, do hereby certify that on the 1 day of December 19 77, I found (evidence) ~~(XXXXXX)~~ of the E $\frac{1}{4}$  corner of Section 32, T 18 N, R 1 E, Fourth Principal Meridian, and I re-established said corner according to the Wisconsin Statutes as shown and described hereon.

Dated this 1 day of Dec. 1977.

Lawrence A. Feddersen

Registered Land Surveyor  
Title

CERTIFIED LAND CORNER

No. 116

History of original corner establishment:

In 1905 Fred Holden set a stone with a cross mark on top.

Description of corner evidence found:

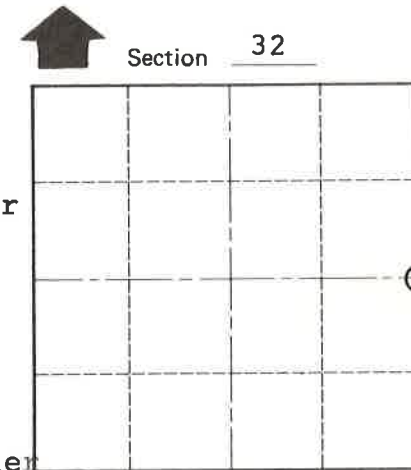
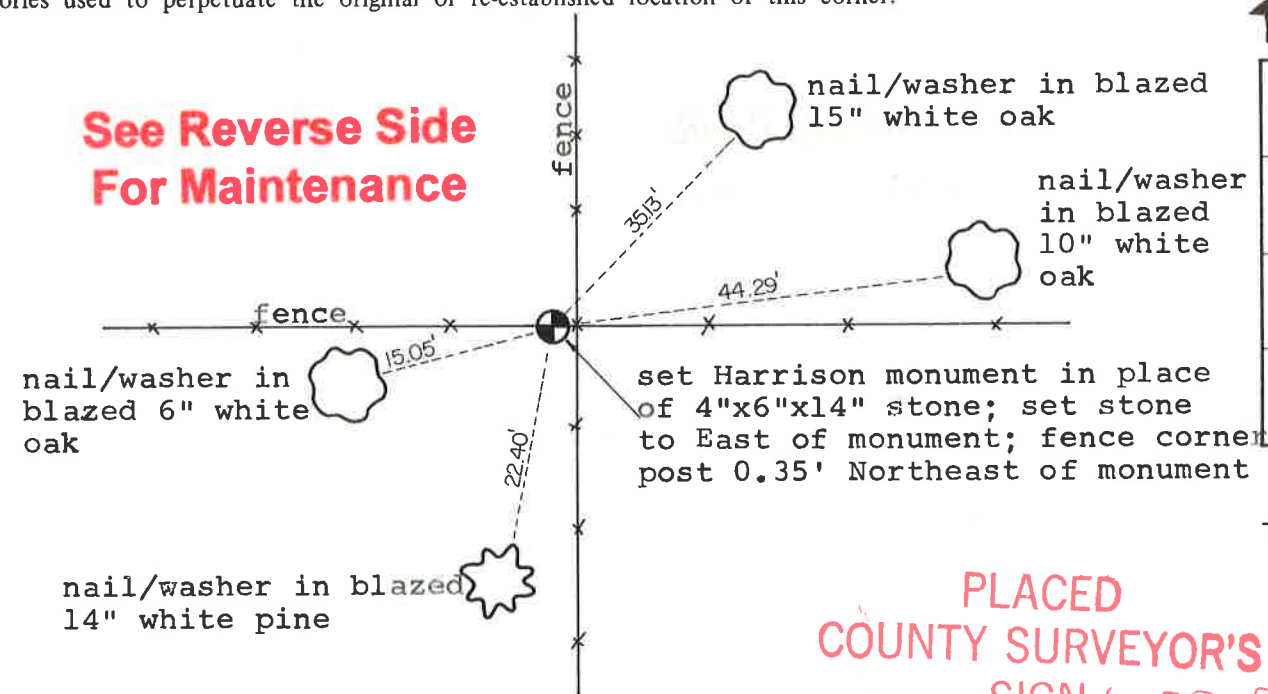
A pointed stone, reddish in color, was found at the intersection of a four-way fence at this corner. A Harrison monument was set in place of the stone. The stone found did not have the cross on top as called for; however, it was similar to a stone a forty to the West that was supposed to have been set by Holden in the same survey in 1905.

Description of corner and witness monuments, references and accessories used to perpetuate the original or re-established location of this corner:

Witnesses to corner location:

Lawrence Feddersen

Mark Heidecke



O = LOCATION CORNER

T 18 N R 1 E  
WISCONSIN

PLACED  
COUNTY SURVEYOR'S  
SIGN 6-22-87

COUNTY SURVEYOR FORM NO. 1

SURVEY CONTROL ORDER

Horizontal \_\_\_\_\_

Vertical \_\_\_\_\_

WISCONSIN COORDINATE SYSTEM

Corner	East (X)	North (Y)	Elevation (Z)	Zone
Control Sta. Name				

~~City, Village or~~ Town of Byron

County of Monroe