

**U. S. Public Land Corner
Maintenance**

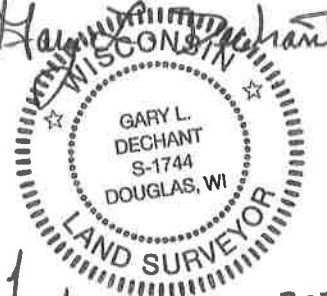
Corner: E1/4 Sec. 31, T18N-R1E

41801312000

<u>Date</u>	<u>Crew</u>	<u>Monument type</u>
February 19, 2021	Zachariah P. Dechant Gary L. Dechant	Harrison intact, set new sign 1' north. 2" iron pipe 1.5' NW up 2'. Swamp lands

<u>References:</u>	<u>Bearing</u>	<u>Distance</u>
1) Set 2' section T post, 4' west of 8" White Oak	S70E	94.16'
2) Set 2' section T post, 4' NW of 10" White Oak	S28E	84.05'
3) Set 2' section T post, 4' NE of 10" Black Oak	S40W	76.25'
4) Set 2' section T post, 4' SE of 8" White Pine	N30W	85.60'

Gary L. Dechant



February 23, 2021

I, Gary L. Dechant, do hereby certify that on the 2nd day of January 19 87, I found (evidence) (no evidence) of the E¹/₄ corner of Section 31, T 18 N, R 1 E Fourth Principal Meridian, and I re-established said corner according to the Wisconsin Statutes as shown and described hereon.

Dated this 8th day of Jan. 19 87.

Gary L. Dechant
 Reg. Land Surveyor, S-1744
Title

History of corner establishment since Original Government Survey

Fred Holden set a 2½" iron pipe at this corner.

Description of corner evidence found:

Holden's monument was not found. Reset corner equidistant and on a straight line between section corners.

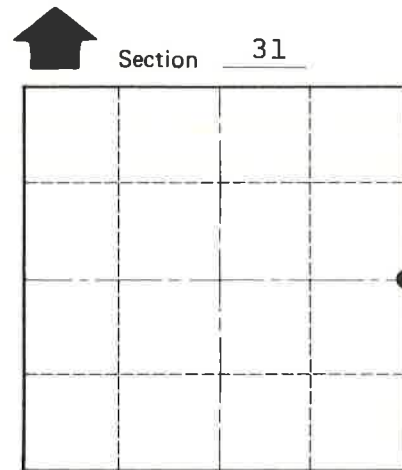
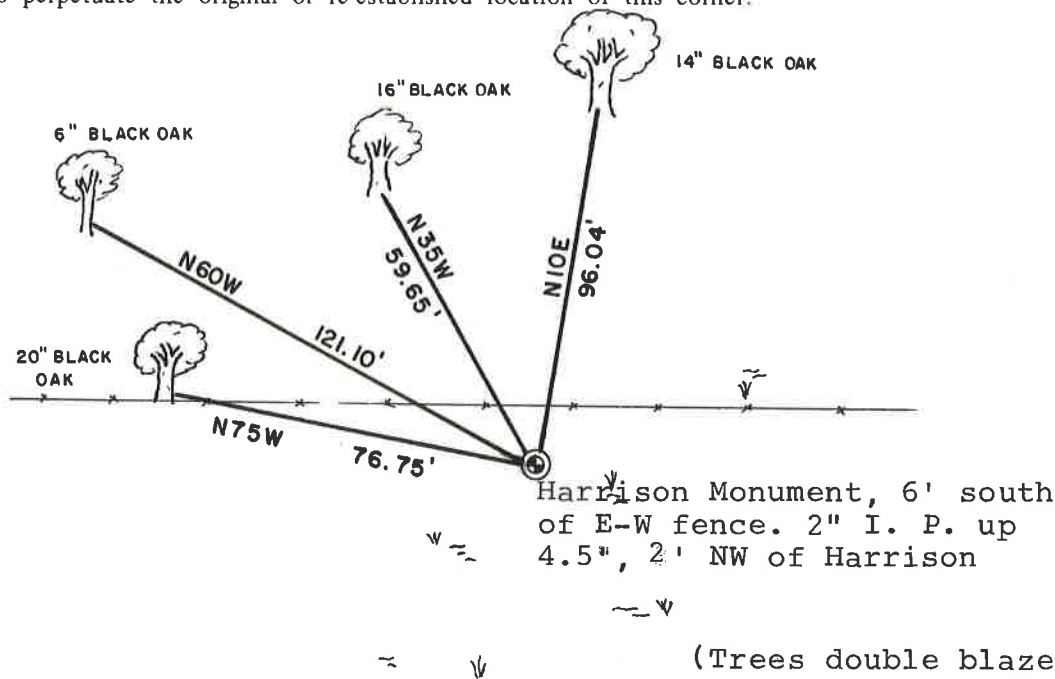
**See Reverse Side
For Maintenance**

Description of corner and witness monuments, references and accessories used to perpetuate the original or re-established location of this corner:

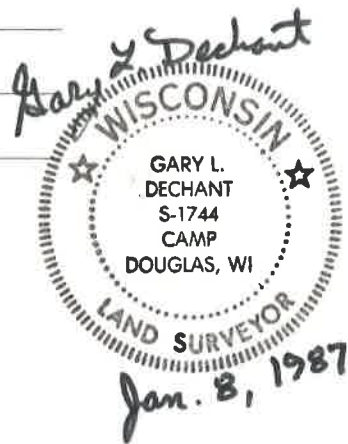
Witnesses to corner location:

David E. Madison

Gary L. Dechant



● = LOCATION CORNER
 T 18 N R 1 E
 WISCONSIN



SURVEY CONTROL ORDER

Horizontal	_____
Vertical	_____

WISCONSIN COORDINATE SYSTEM

Corner	East (X)	North (Y)	Elevation (Z)	Zone
Control Sta. Name				

City, Village or Town Byron
 County of Monroe

COUNTY SURVEYOR FORM NO. 1