

**U. S. Public Land Corner
Maintenance**

**Corner: E1/4 Sec. 26, T18N-R1E
41801262000**

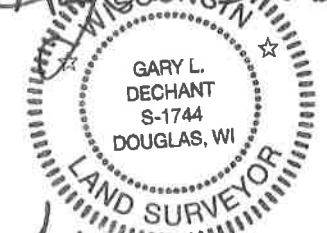
<u>Date</u>	<u>Crew</u>	<u>Monument type</u>
February 19, 2021	Zachariah P. Dechant Gary L. Dechant	Harrison, top 12" broke off, down 10" 12' west of north-south fence remnants. Set sign on north side of Harrison

References:

	<u>Bearing</u>	<u>Distance</u>
1) Set 2' section T post, 4' SW of 8" Maple	N30E	49.12'
2) Set 2' section T post, 4' SW of 18" Maple (1982 BT)	N55E	25.90'
3) Set 2' section T post, 4' NW of 12" White Oak	S80E	27.25'
4) Set 2' section T post, 4' NW of 8" White Oak	S65E	49.29'

Bearings maybe slightly off due possible compass malfunction.

Gary L. Dechant



February 23, 2021

I, Harley A. Sime, do hereby certify that on the Twentieth day of May 19 82, I found ~~evidence~~ (no evidence) of the East 1/4 corner of Section 26, T 18 N, R 1 E Fourth Principal Meridian, and I re-established said corner according to the Wisconsin Statutes as shown and described hereon.

Dated this 4th day of June 19 82.

Harley A. Sime - R. L. S. 355

County Surveyor, Monroe County

Approved: **HARLEY A. SIME**
MONROE CO. SURVEYOR

Description of corner and witness monuments, references and accessories used to perpetuate the original or re-established location of this corner:

Witnesses to corner location:

Bryan Meyer - Crew Chief

Gary Dechant

History of corner establishment since Original Government Survey
Henry Schroeder was here in December of 1889.

Description of corner evidence found:

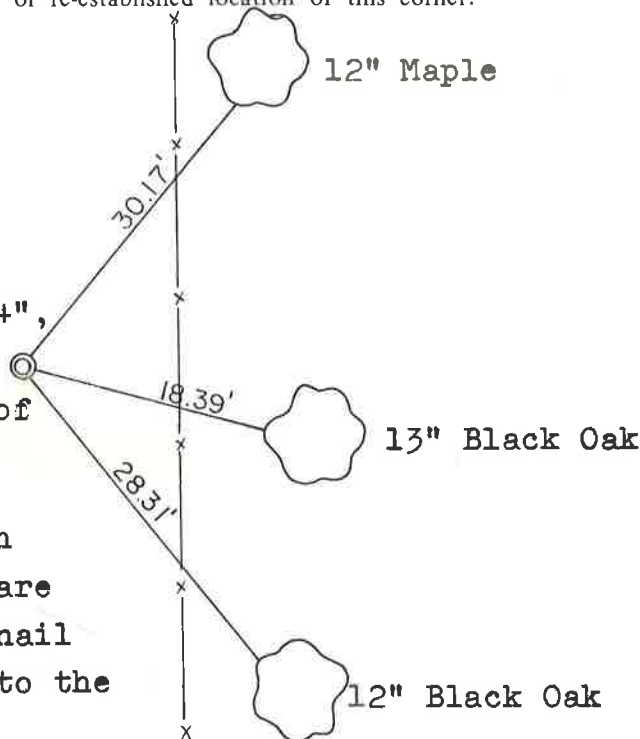
Set on line and equidistant between the Northeast and Southeast corners of Section 26.

See Reverse Side For Maintenance

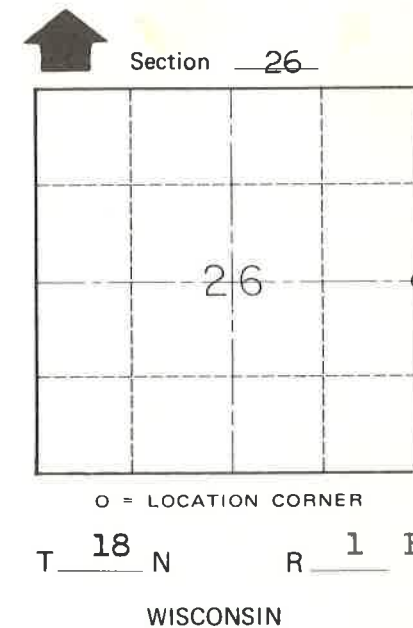


COUNTY SURVEYOR FORM NO. 1

Set Harrison up 4", near edge of field, 12' West of fence.



All trees are double blazed with blazes facing the corner. They are also hacked in the side with a nail set in the hack. Distances are to the nails.



SURVEY CONTROL ORDER

Horizontal	_____
Vertical	_____

WISCONSIN COORDINATE SYSTEM

Corner	East (X)	North (Y)	Elevation (Z)	Zone
Control Sta. Name				

~~City, Village or~~ Town of Byron
County of Monroe