

RECORDED  
 MAR 15 2004  
 BY: G. Jacobson

VERNON COUNTY  
 CERTIFIED U.S. PUBLIC LAND SURVEY MONUMENT RECORD

INSTRUCTIONS: THIS RECORD SHALL SHOW THE LOCATION OF THE CORNER AND SHALL INCLUDE ALL OF THE FOLLOWING ELEMENTS (A-I)

(A) IDENTIFY THE CORNER BY REFERENCE TO THE U.S. PUBLIC LAND SURVEY SYSTEM

■ = CORNER MONUMENT RESTORED

WITNESSES TO CORNER LOCATION:

- 1) Robert M. Lampman
- 2) Jessica A. Zamor

VERNON COUNTY COORDINATES - NAD83(1991) - SURVEY FEET

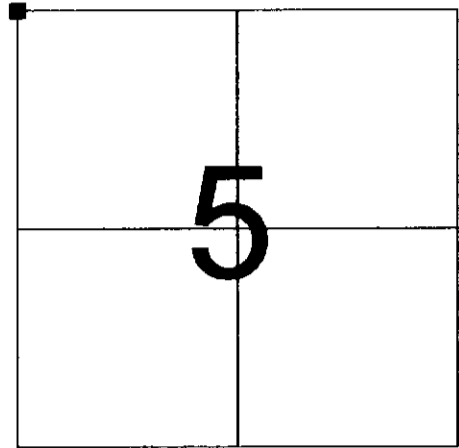
NORTHING: 211512.375

EASTING: 828142.269

MONROE COUNTY COORDINATES - NAD83(1991) - SURVEY FEET

NORTHING: 300499.171

EASTING: 731692.284



SECTION 5  
 TOWN 14 NORTH, RANGE 1 EAST

(B) DESCRIBE ANY RECORD EVIDENCE, MONUMENT EVIDENCE, OCCUPATIONAL EVIDENCE, TESTIMONIAL EVIDENCE OR ANY OTHER MATERIAL EVIDENCE YOU CONSIDERED, AND WHETHER THE MONUMENT WAS FOUND OR PLACED.

Found existing 5.2' long iron axle. Top of iron axle was 1' below surface. Top 1 foot of axle was bent slightly. The remainder of the axle was straight, vertical and firmly planted. Removed the axle and placed a Lunde Monument at the location of the straight portion of the axle.

The axle is believed to be the "iron at corner" as referred to on resurvey of Section 32, T15N, R1E by Fred A Holden dated May 1904.

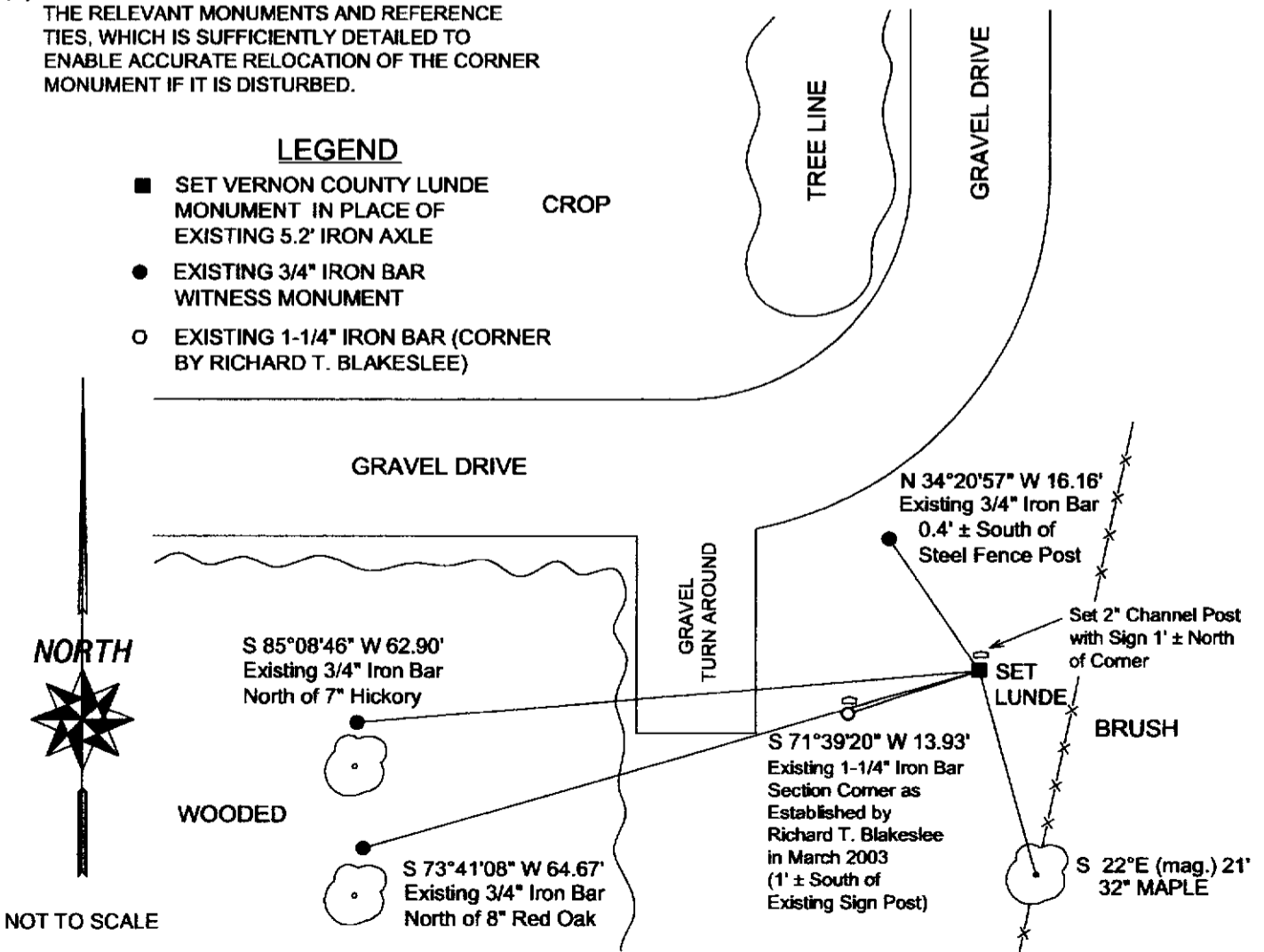
(CONTINUED ON REVERSE)

(C) IN THE PLAN VIEW DRAWING BELOW, PROVIDE REFERENCE TIES TO AT LEAST 4 WITNESS MONUMENTS OR, IF THE LOCATION IS WITHIN A MUNICIPALITY, TO AT LEAST 2 WITNESS MONUMENTS. (WITNESS MONUMENTS SHALL BE MADE OF CONCRETE, NATURAL STONE, IRON, OR OTHER EQUALLY DURABLE MATERIAL.) DESCRIBE WITNESS MONUMENTS.

(D) SHOW A PLAN VIEW DRAWING, DEPICTING THE RELEVANT MONUMENTS AND REFERENCE TIES, WHICH IS SUFFICIENTLY DETAILED TO ENABLE ACCURATE RELOCATION OF THE CORNER MONUMENT IF IT IS DISTURBED.

LEGEND

- SET VERNON COUNTY LUNDE MONUMENT IN PLACE OF EXISTING 5.2' IRON AXLE
- EXISTING 3/4" IRON BAR WITNESS MONUMENT
- EXISTING 1-1/4" IRON BAR (CORNER BY RICHARD T. BLAKESLEE)



(E) DESCRIBE ANY MATERIAL DISCREPANCY BETWEEN THE LOCATION OF THE CORNER AS RESTORED OR REESTABLISHED AND THE LOCATION OF THAT CORNER AS PREVIOUSLY RESTORED OR REESTABLISHED BY DISTANCE AND DIRECTION. SHOW THE DISCREPANCY ON THE PLAN VIEW DRAWING UNDER (D), ABOVE. SHOW THE DISTANCES BETWEEN THE CORNER AS PREVIOUSLY RESTORED OR REESTABLISHED AND (1) THE CORNER AS RESTORED OR REESTABLISHED, AND (2) TO AT LEAST 2 OF THE WITNESS MONUMENTS AS SHOWN ON THE DRAWING IN (D), ABOVE.

The location of the found axle disagrees with a corner location established in March of 2003 by Richard T. Blakeslee. Blakeslee's corner location was reestablished according to monuments from survey work in Section 5, T14N, R1E by James Carroll. Blakeslee set a 1-1/4 iron bar. The amount of the discrepancy is 13.93 feet. The discrepancy is shown in detail in the sketch on the reverse side of this sheet.

(F) WAS THE CORNER RESTORED THROUGH ACCEPTANCE OF (1) AN OBLITERATED EVIDENCE LOCATION, OR (2) A FOUND PERPETUATED LOCATION?

(2) A FOUND PERPETUATED LOCATION

(G & H) WAS THE CORNER REESTABLISHED THROUGH LOST CORNER PROPORTIONATE METHODS? IF SO SHOW THE METHOD, INCLUDING THE DIRECTIONS AND DISTANCES TO OTHER PUBLIC LAND SURVEY CORNERS USED AS EVIDENCE OR USED FOR PROPORTIONING IN DETERMINING THE CORNER LOCATION.

N/A

(\*\*) ANY ADDITIONAL INFORMATION RELATED TO CORNER LOCATION

CONTINUED FROM FRONT: (B) EVIDENCE INFORMATION

There was no record evidence to indicate that Holden's iron at the corner had been recovered or searched for since 1904. Noticing that both record distances and occupation at the forty corners to the east and west of this corner suggested that perhaps the section corner should be located easterly of Blakeslee's iron, I began examining said information more closely and narrowing an area that could be searched for Holden's iron. As a result of this search the iron axle was recovered.

The found axle is located northwesterly of a 32" maple, such that said maple tree matches an original government call for an 8" Soft Maple S22°E 21.12'. I bored and attempted to age the maple. The results of the boring were not entirely conclusive as I was only able to recover a 6" sample. The maple is very mature and Holden did call for original bearings remaining at the corner in 1904. Therefore, I believe that it is very likely that the maple is the original government witness as referenced by Holden.

Distance to the monumented quarter corner easterly measures 2641.87 feet as compared to Holden's record of 2641.32 feet. Distance to the monumented quarter corner westerly measures 2641.36 feet as compared to Holden's record of 2640. The location as per the axle is also verified by alignment of the monumented quarter corner to the north and north/south occupation in the area of the forty corner to the north.

This corner location is approximately 4.67 feet north of a straight line between monumented quarter corners to the east and west.

**NOTE:**

Photographs of found axle included as attachment to this form.

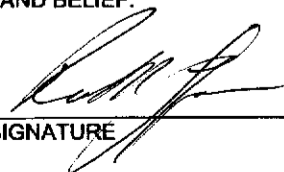
**CORNER HISTORY:**

- Original government corner location established by Stuntz & Sargent in 1851.
- Fred A. Holden surveyed in Sections 31 and 32, T15N, R1E in May and June of 1904. On Holden's survey the corner of concern is marked "Original by old bearings and iron at corner".
- James Carroll shows a 1-1/4" iron pipe set at the corner on a survey located in part of Section 31, T15N, R1E and dated August 4, 1987.
- Richard T. Blakeslee set a 1-1/4" iron bar at the corner and prepared a tie sheet dated March 20, 2003.
- Gregory A. Fauerbach calls for a found 1-1/4" steel bar at the corner on Monroe County C.S.M. at Volume 16, Page 88, Document No. 521318. Said C.S.M. being dated March 18, 2003.

AFFIX LAND SURVEYOR SEAL

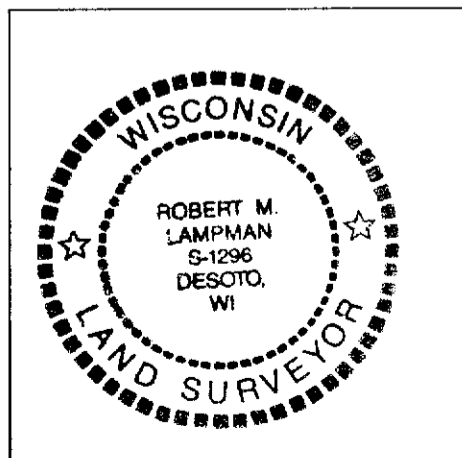
(I) I, ROBERT M. LAMPMAN, CERTIFY THAT THE LOCATION SHOWN ON THIS RECORD WAS DETERMINED BY ME OR UNDER MY DIRECTION AND CONTROL AND THAT THIS U.S. PUBLIC LAND SURVEY MONUMENT RECORD IS CORRECT AND COMPLETE TO THE BEST OF MY KNOWLEDGE AND BELIEF.

SIGNATURE



DATE

3-10-04



JAZ  
Note

3/5/2004 4:48:52 PM

Attachment - Public Land Survey  
Monument Record for NW Corner of  
Section 5, T14N, R1E



✓

# VERNON COUNTY CERTIFIED U.S. PUBLIC LAND SURVEY MONUMENT RECORD

INSTRUCTIONS: THIS RECORD SHALL SHOW THE LOCATION OF THE CORNER AND SHALL INCLUDE ALL OF THE FOLLOWING ELEMENTS (A-I)

(A) IDENTIFY THE CORNER BY REFERENCE TO THE U.S. PUBLIC LAND SURVEY SYSTEM

Northwest corner Section 5, T14N, R1E

■ = CORNER MONUMENT RESTORED

set 1½" x 24" Re-Bar

WITNESSES TO CORNER LOCATION:

- 1) Richard Blakeslee
- 2) Josh Murphy
- 3)

STATE PLANE COORDINATES (WISCONSIN SOUTH ZONE)

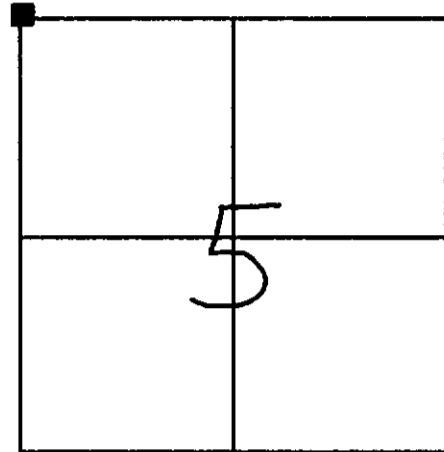
NORTHING:

EASTING:

VERNON COUNTY COORDINATES

NORTHING:

EASTING:



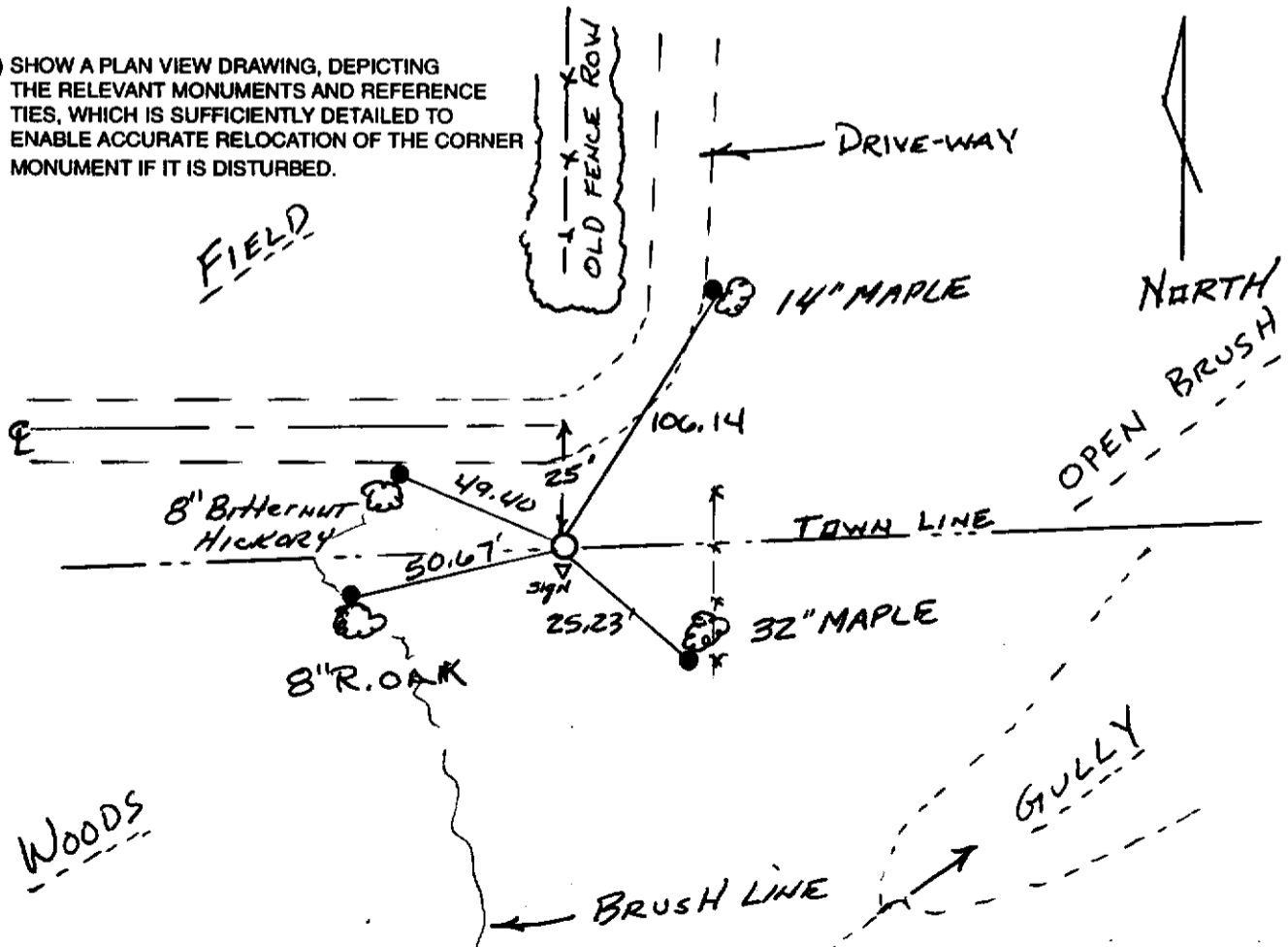
SECTION 5, TOWN 14 NORTH, RANGE 1 EAST

(B) DESCRIBE ANY RECORD EVIDENCE, MONUMENT EVIDENCE, OCCUPATIONAL EVIDENCE, TESTIMONIAL EVIDENCE OR ANY OTHER MATERIAL EVIDENCE YOU CONSIDERED, AND WHETHER THE MONUMENT WAS FOUND OR PLACED.

Researched Vernon County survey records and found no record of surveys which used this corner except those performed by James Carroll in the last 20 years. Field location of this corner has been disturbed by excavation work. There is a occupied fence line running North from our monumented position which starts approx. 70' North of our corner.

(C) IN THE PLAN VIEW DRAWING BELOW, PROVIDE REFERENCE TIES TO AT LEAST 4 WITNESS MONUMENTS OR, IF THE LOCATION IS WITHIN A MUNICIPALITY, TO AT LEAST 2 WITNESS MONUMENTS. (WITNESS MONUMENTS SHALL BE MADE OF CONCRETE, NATURAL STONE, IRON, OR OTHER EQUALLY DURABLE MATERIAL.) DESCRIBE WITNESS MONUMENTS.

(D) SHOW A PLAN VIEW DRAWING, DEPICTING THE RELEVANT MONUMENTS AND REFERENCE TIES, WHICH IS SUFFICIENTLY DETAILED TO ENABLE ACCURATE RELOCATION OF THE CORNER MONUMENT IF IT IS DISTURBED.



Note: all ties to trees made with 8" spike. 3/4" RE-BAR SET AT BASE.

Gov't Land Corner sign 0.20' South of corner.

(E) DESCRIBE ANY MATERIAL DISCREPANCY BETWEEN THE LOCATION OF THE CORNER AS RESTORED OR REESTABLISHED AND THE LOCATION OF THAT CORNER AS PREVIOUSLY RESTORED OR REESTABLISHED BY DISTANCE AND DIRECTION. SHOW THE DISCREPANCY ON THE PLAN VIEW DRAWING UNDER (D), ABOVE. SHOW THE DISTANCES BETWEEN THE CORNER AS PREVIOUSLY RESTORED OR REESTABLISHED AND (1) THE CORNER AS RESTORED OR REESTABLISHED, AND (2) TO AT LEAST 2 OF THE WITNESS MONUMENTS AS SHOWN ON THE DRAWING IN (D), ABOVE.

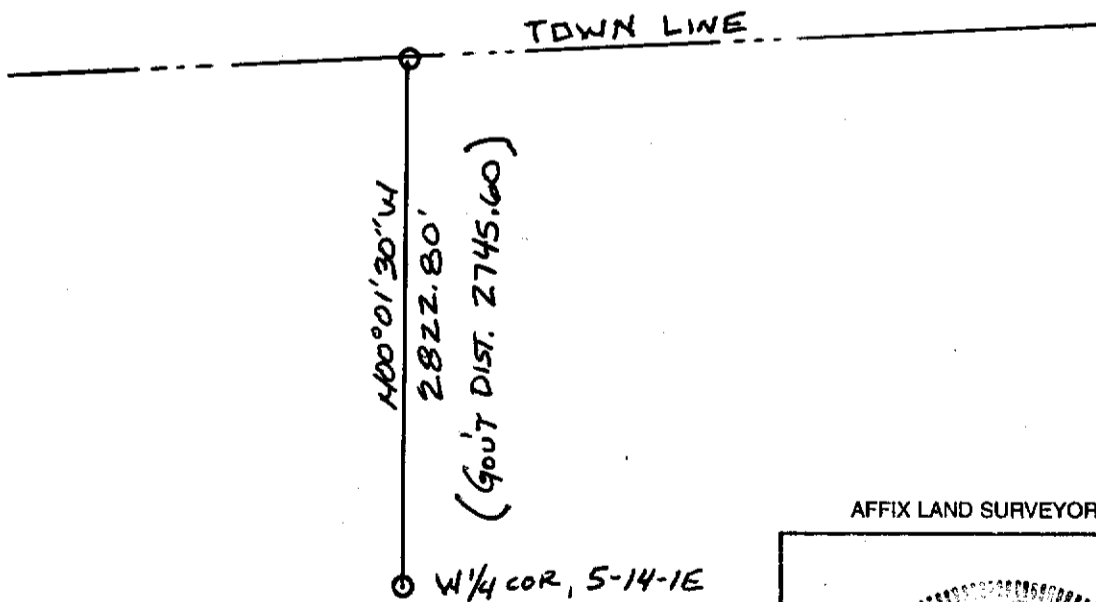
We found monuments set by James Carroll along the West line of the NW1/4 of Section 5. We used these monuments to establish the West line of the NW1/4 and ran that line North until it intersected the Township line to the North. We could not find any evidence that James Carroll ever set this corner.

(F) WAS THE CORNER RESTORED THROUGH ACCEPTANCE OF (1) AN OBLITERATED EVIDENCE LOCATION, OR (2) A FOUND PERPETUATED LOCATION?

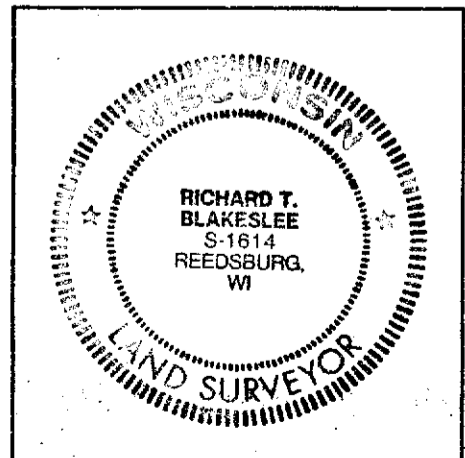
No

(G & H) WAS THE CORNER REESTABLISHED THROUGH LOST CORNER PROPORTIONATE METHODS? IF SO SHOW THE METHOD, INCLUDING THE DIRECTION AND DISTANCES TO OTHER PUBLIC LAND SURVEY CORNERS USED AS EVIDENCE OR USED FOR PROPORTIONING IN DETERMINING THE CORNER LOCATION.

No



AFFIX LAND SURVEYOR SEAL



(I) I, Richard Blakeslee CERTIFY THAT THE LOCATION SHOWN ON THIS RECORD WAS DETERMINED BY ME OR UNDER MY DIRECTION AND CONTROL AND THAT THIS U.S. PUBLIC LAND SURVEY MONUMENT RECORD IS CORRECT AND COMPLETE TO THE BEST OF MY KNOWLEDGE AND BELIEF.

*Richard T. Blakeslee* 3-20-03  
 SIGNATURE DATE

REVISED 4-14-03 R.T.B.