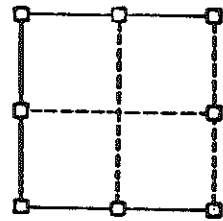


CORNERS



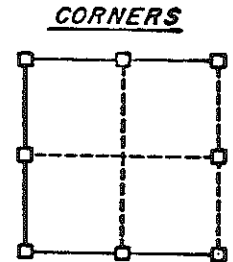
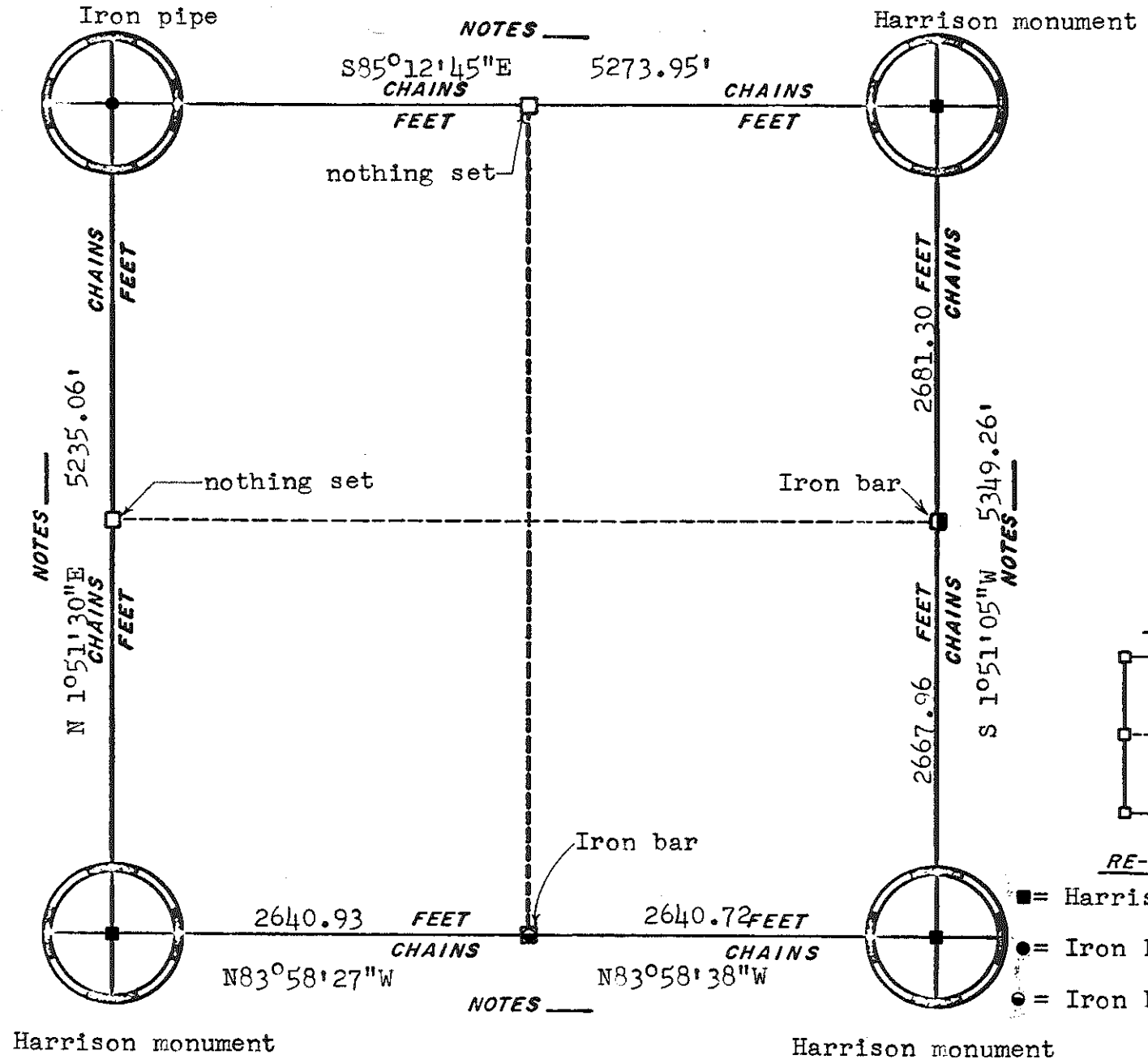
RE-ESTABLISHED

- = Harrison monument
- = Iron Pipe
- ◉ = Iron Bar

ORIGINAL SURVEY DATA

BY [REDACTED]
DATE March 13, 1980

SURVEYED BY	CONTRACT DATE	COUNTY MONROE	TOWN-VILLAGE-CITY	SECTION	TOWNSHIP	RANGE
Harley A. Sime	Summer 1980	[REDACTED]	Byron	2	T18N	R1E

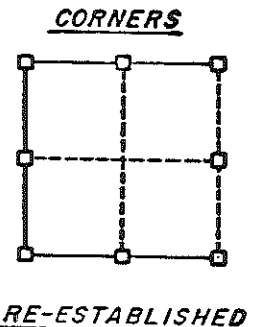
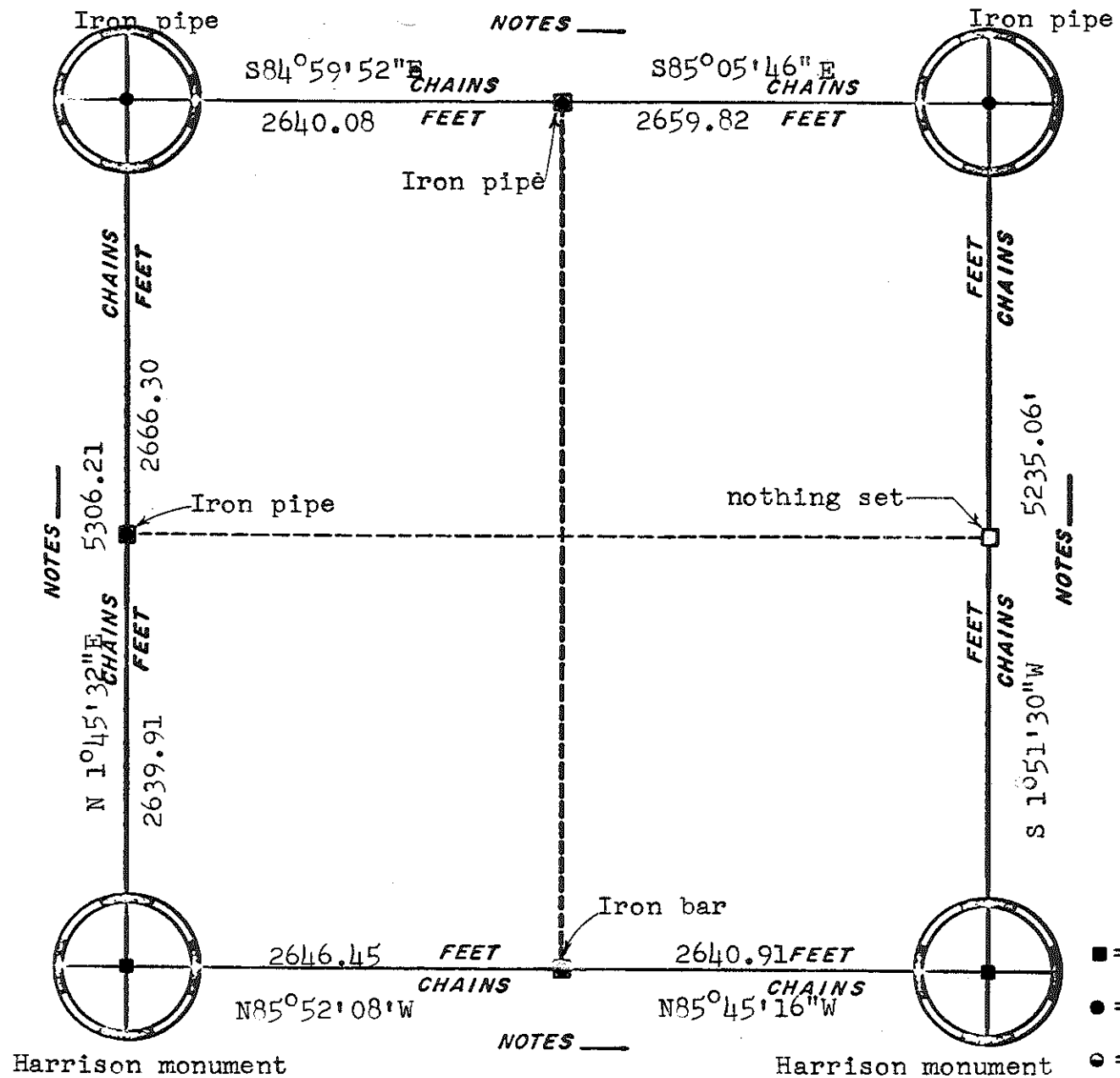


RE-ESTABLISHED
 ■ = Harrison monument
 ● = Iron Pipe
 ● = Iron Bar

ORIGINAL SURVEY DATA

BY _____
 DATE March 13, 1980

SURVEYED BY	CONTRACT DATE	COUNTY MONROE	TOWN-VILLAGE-CITY	SECTION	TOWNSHIP	RANGE
Harley A. Sime	Summer 1980		Byron	3	T18N	R1E



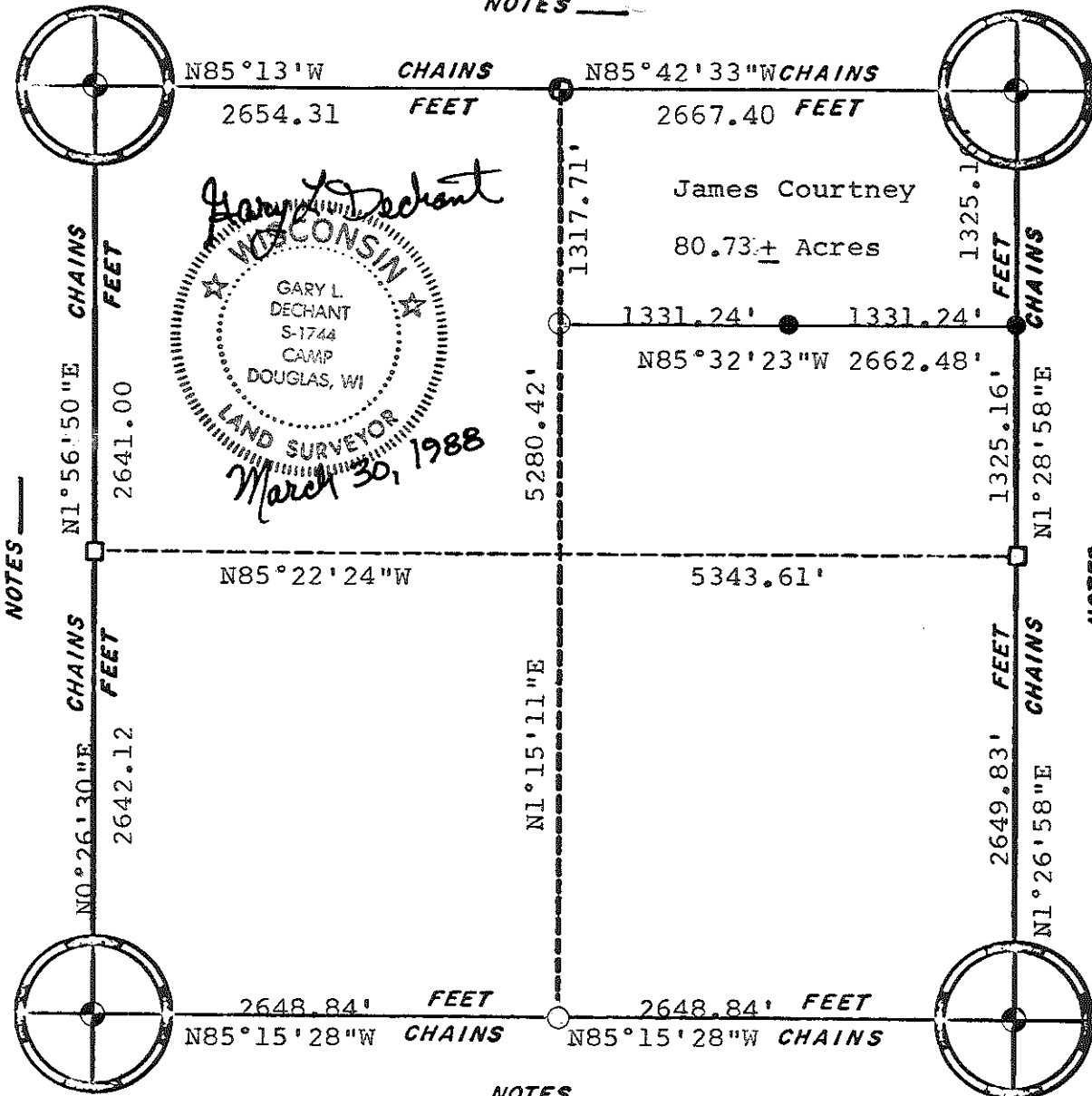
- = Harrison monument
- = Iron Pipe
- = Iron Bar

ORIGINAL SURVEY DATA

BY [REDACTED]
DATE March 13, 1980

SURVEYED BY Harley A. Sime	CONTRACT DATE Summer 1980	COUNTY MONROE	TOWN-VILLAGE-CITY Byron	SECTION 4	TOWNSHIP T18N	RANGE R1E
-------------------------------	------------------------------	---------------	----------------------------	--------------	------------------	--------------

NOTES _____



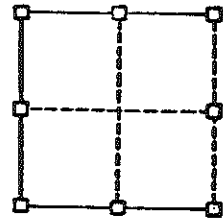
Gary L. Dechant
 WISCONSIN
 GARY L. DECHANT
 S-1744
 CAMP DOUGLAS, WI
 LAND SURVEYOR
 March 30, 1988

James Courtney
 80.73+ Acres



- NOTES _____
- ⊙ = Ex. Harrison Marker
 - = Ex. 1 1/4" Iron Bar
 - = Set 1 1/4" Iron Bar
 - = Set 2" Iron Pipe

CORNERS



RE-ESTABLISHED

NOTES _____

ORIGINAL SURVEY DATA

BY _____
 DATE _____

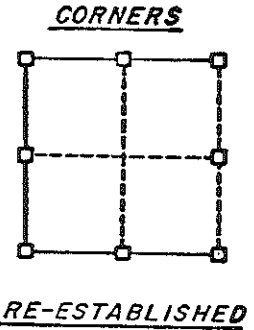
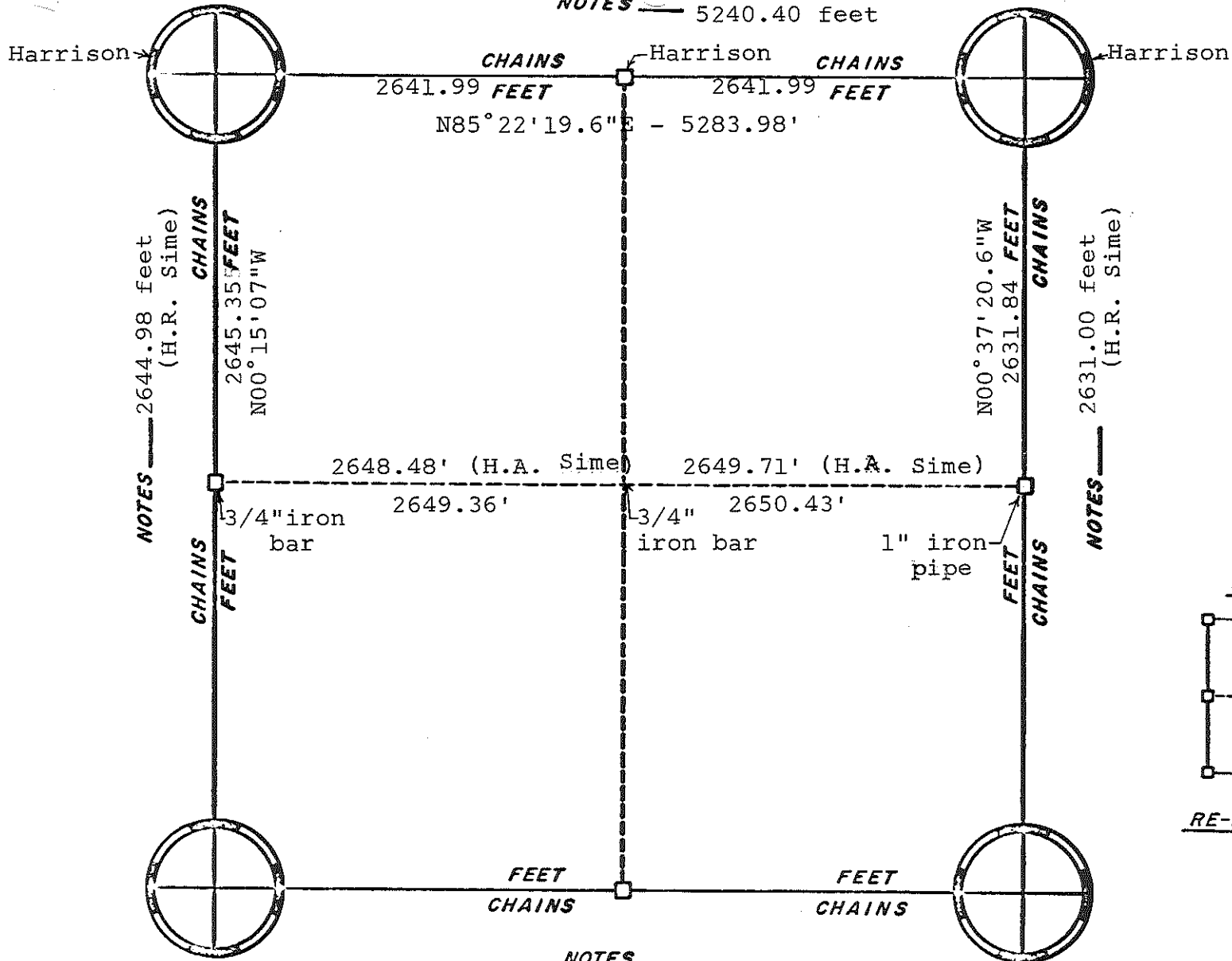
SURVEYED BY G.L. Dechant	CONTRACT DATE March 30, 1988	COUNTY MONROE	TOWN-VILLAGE-CITY Byron	SECTION 11	TOWNSHIP 18N	RANGE 1E
-----------------------------	---------------------------------	------------------	----------------------------	---------------	-----------------	-------------

2638.56 (H.A. Sime)

2638.56 feet (H.A. Sime)

NOTES

79.40 chains =
5240.40 feet

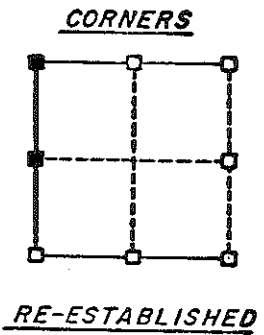
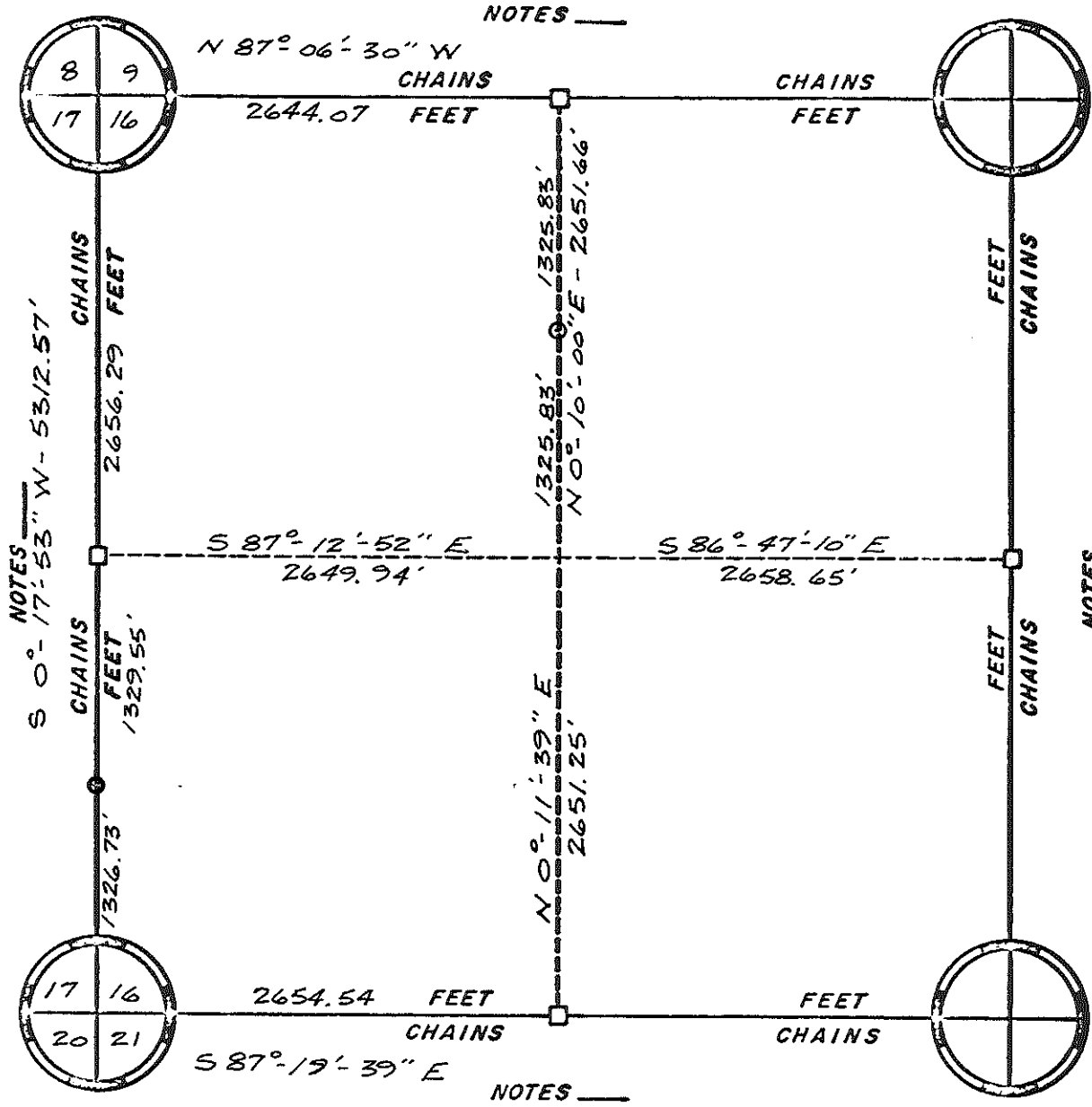


ORIGINAL SURVEY DATA

BY [Redacted]
DATE Nov. 23, 1981

SURVEYED BY L.A. Feddersen	CONTRACT DATE	COUNTY MONROE	TOWN-VILLAGE-CITY Byron	SECTION 15	TOWNSHIP 18N	RANGE 1E
-------------------------------	---------------	---------------	----------------------------	---------------	-----------------	-------------

1.60

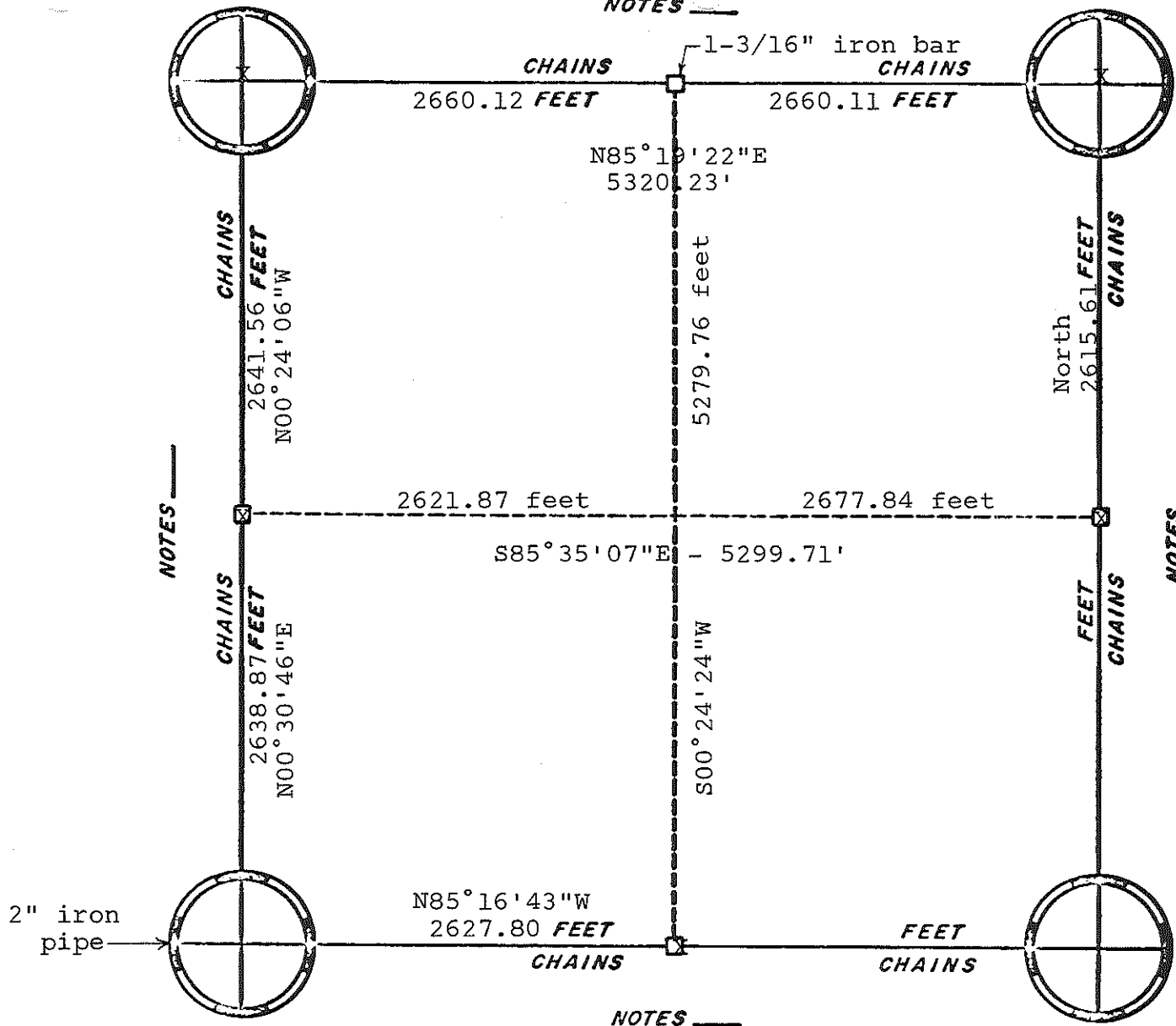


ORIGINAL SURVEY DATA

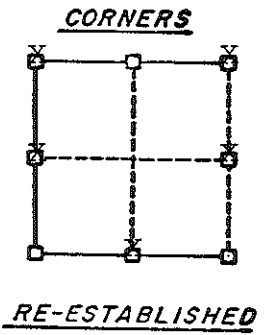
BY _____
DATE 6/11/88

SURVEYED BY R. PARISH	CONTRACT DATE	COUNTY MONROE	TOWN-VILLAGE-CITY BYRON	SECTION 16	TOWNSHIP 18 N.	RANGE 1 E.
--------------------------	---------------	---------------	----------------------------	---------------	-------------------	---------------

NOTES _____



HARRISON MONUMENT



NOTES _____

NOTES _____

NOTES _____

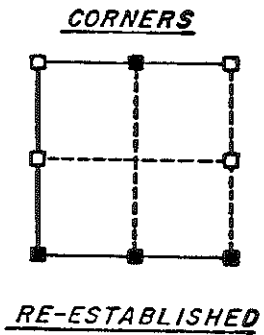
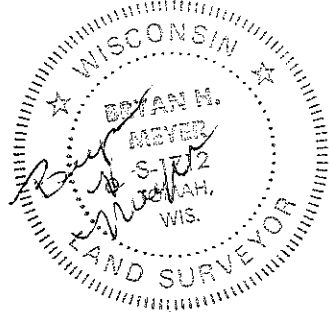
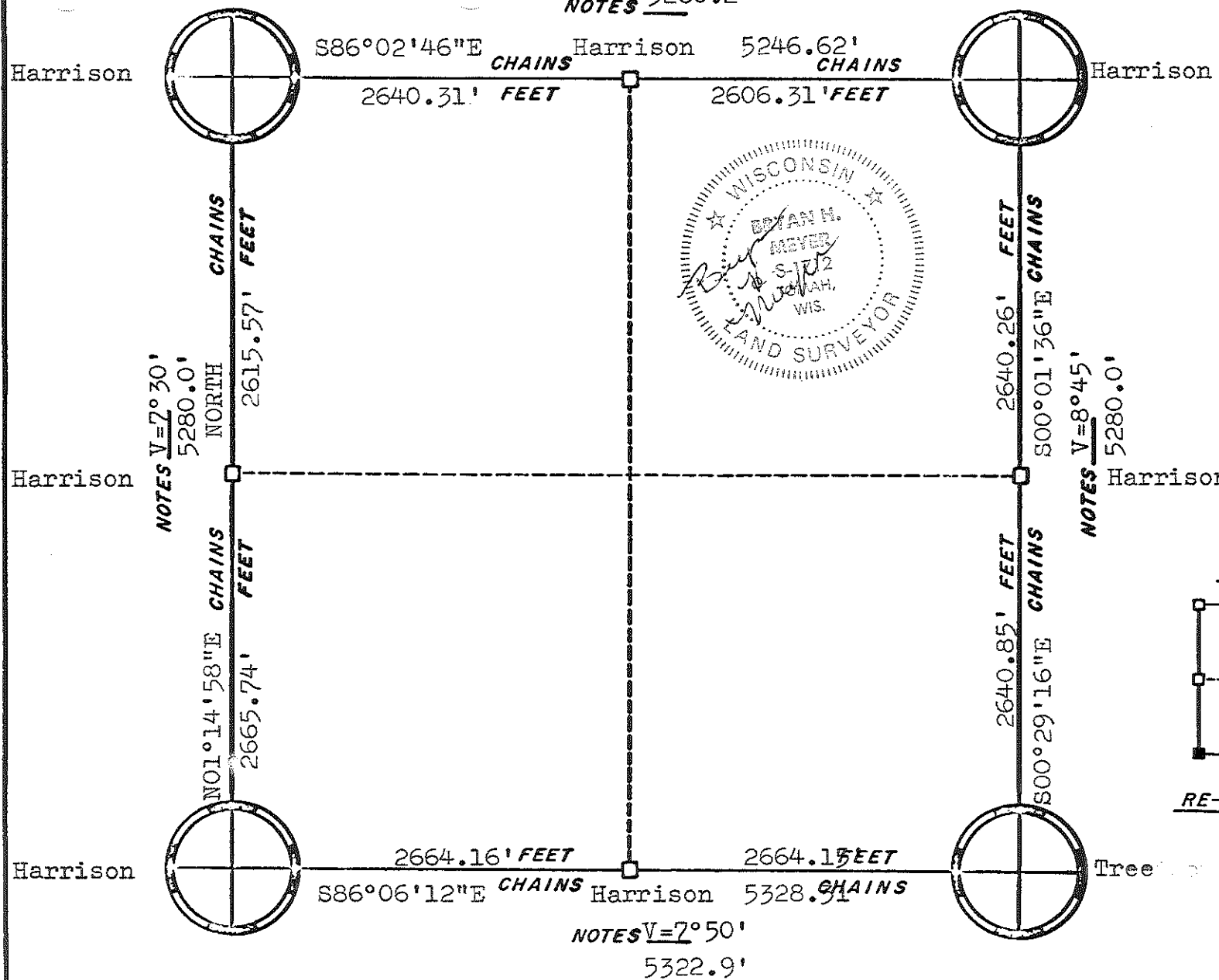
ORIGINAL SURVEY DATA

BY

DATE Nov. 23, 1981

SURVEYED BY L.A. Feddersen D.J. Malliet	CONTRACT DATE Sept., 1977	COUNTY MONROE [REDACTED]	TOWN- XXXXXX Byron	SECTION 22	TOWNSHIP 18N	RANGE 1E
---	------------------------------	-----------------------------	----------------------------------	---------------	-----------------	-------------

V=7°50'
 NOTES 5260.2'

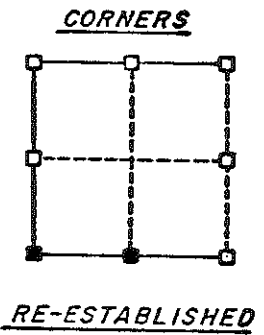
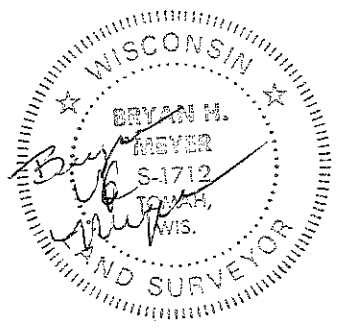
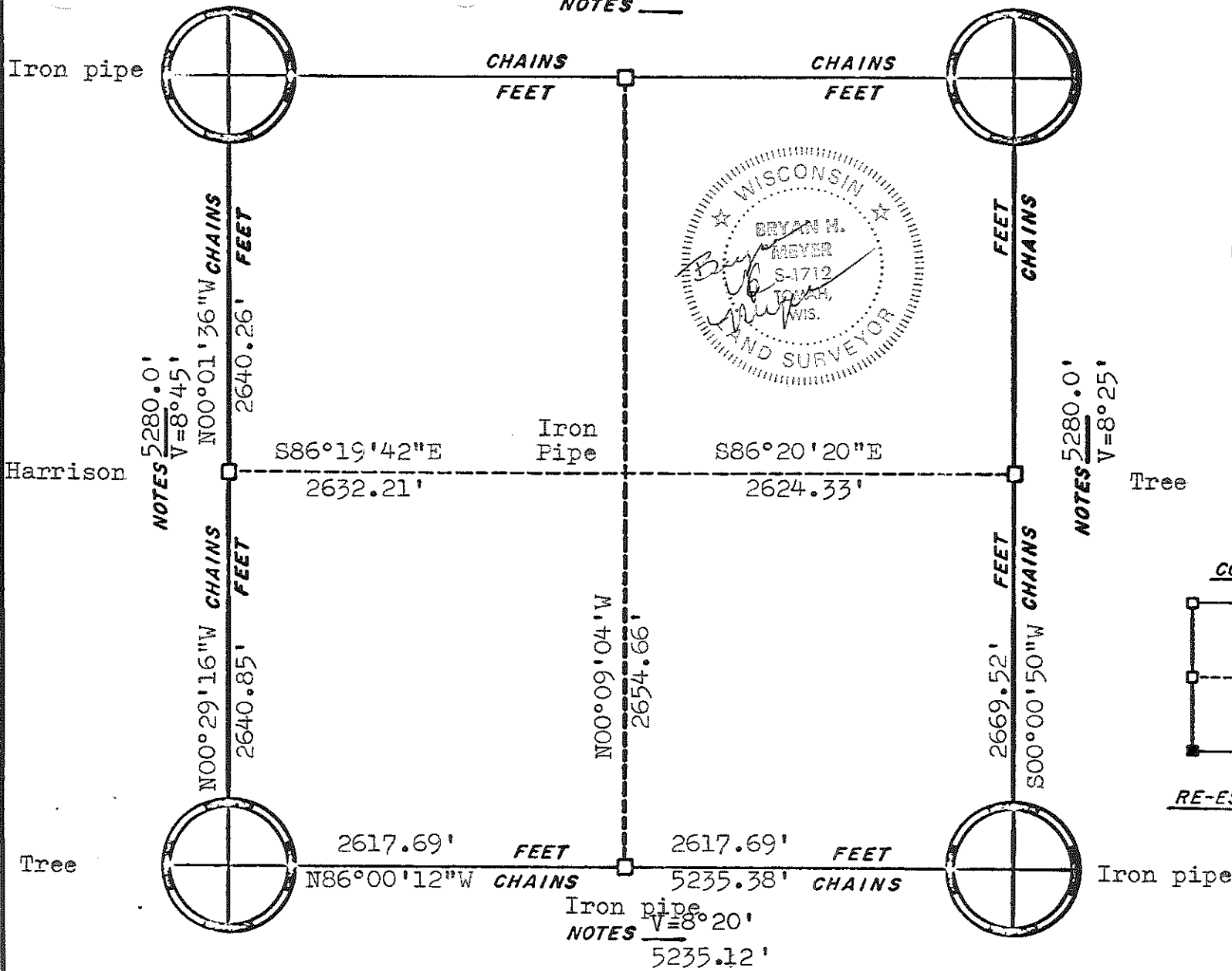


ORIGINAL SURVEY DATA

BY *B. Meyer*
 DATE 1/12/83

SURVEYED BY H.A.Sime & Associates	CONTRACT DATE February, 1982	COUNTY MONROE	BYRON - CITY Byron	SECTION 23	TOWNSHIP 18N	RANGE 1E
---	---------------------------------	---------------	----------------------------------	---------------	-----------------	-------------

NOTES _____



ORIGINAL SURVEY DATA

BY *B. Meyer*
 DATE 1/12/83

SURVEYED BY H. A. Sime & Associates	CONTRACT DATE February, 1982	COUNTY MONROE [REDACTED]	TOWN- BYRON Byron	SECTION 24	TOWNSHIP 18N	RANGE 1E
---	---------------------------------	-----------------------------	---------------------------------	---------------	-----------------	-------------

5235.12'

NOTES $V=8^{\circ}20'$

Iron pipe

Tree

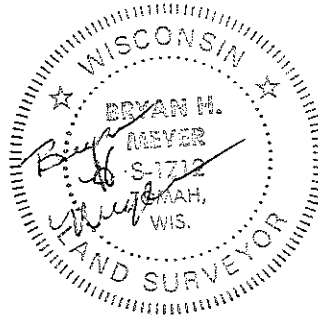
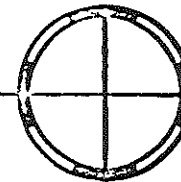
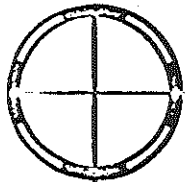
S86°00'12"E CHAINS

5235.38' CHAINS

Iron pipe

2617.69' FEET

2617.69' FEET



5280.0'
NOTES $V=8^{\circ}45'$

Harrison

5227.05' CHAINS

2613.52' FEET

2618.66' FEET

5237.32' CHAINS

NOTES $V=8^{\circ}30'$
5280.0'

Iron pipe

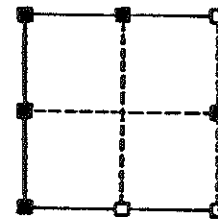
N00°03'45"E CHAINS

2613.53' FEET

2618.66' FEET

S00°10'48"W CHAINS

CORNERS



RE-ESTABLISHED

Harrison

2644.63' FEET

2581.44' FEET

Harrison

N84°57'12"W CHAINS

N86°50'08"W CHAINS

NOTES $V=8^{\circ}25'$

5247.0'

ORIGINAL SURVEY DATA

BY *B. Meyer*

DATE 1/12/83

SURVEYED BY H.A.SIME & ASSOCIATES	CONTRACT DATE February, 1982	COUNTY MONROE [REDACTED]	TOWN- WILLIAMETTE Byron	SECTION 25	TOWNSHIP 18N	RANGE 1E
---	---------------------------------	-----------------------------	---------------------------------------	---------------	-----------------	-------------

V=7°50'

NOTES 5322.9'

Harrison

Harrison

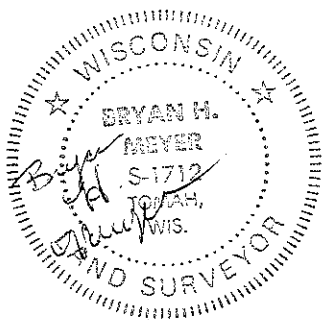
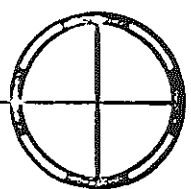
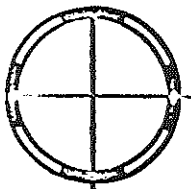
S86°06'12"E CHAINS

5328.31' CHAINS

Tree

2664.16' FEET

2664.15' FEET



NOTES 5280.0'
V=7°50'

CHAINS

5260.47'

2630.24' FEET

Harrison

CHAINS

2630.23' FEET

N00°14'54"W

Harrison

2648.84' FEET

N86°26'33"W CHAINS

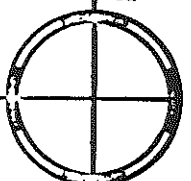
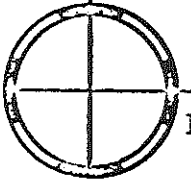
Harrison

2648.83' FEET

5297.67 CHAINS

NOTES 5297.16

V=7°50'



NOTES 5280.0'

FEET

2613.52'

CHAINS

FEET

2613.53'

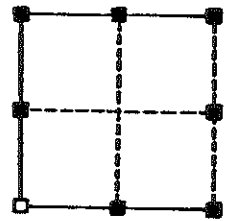
CHAINS

S00°03'45"W

V=8°45'

Harrison

CORNERS



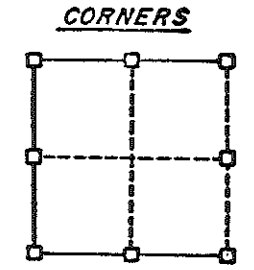
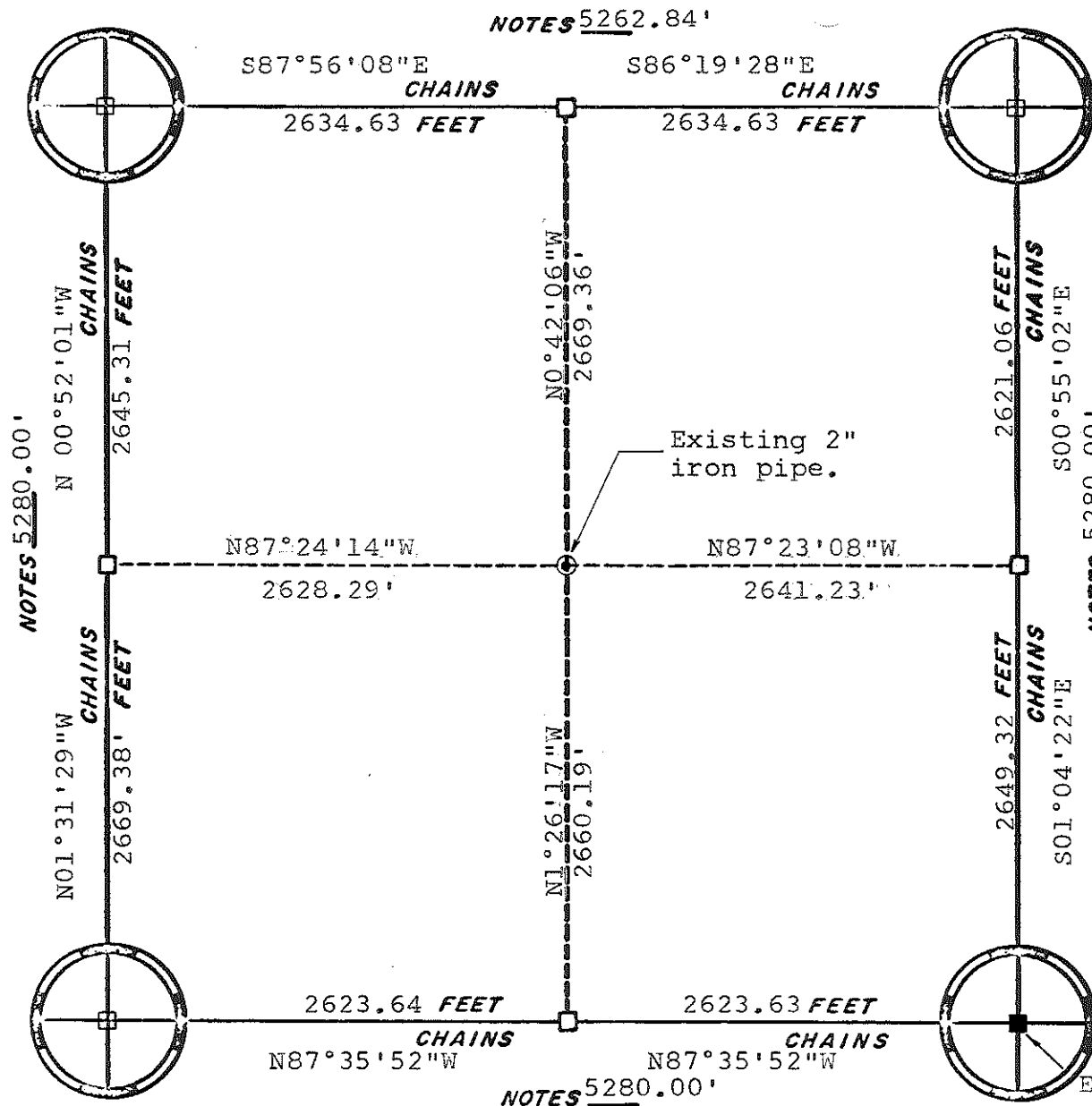
RE-ESTABLISHED

ORIGINAL SURVEY DATA

BY B. Meyer

DATE 1/12/83

SURVEYED BY H.A. SIME & ASSOCIATES	CONTRACT DATE February, 1982	COUNTY MONROE	TOWN- VILLAGE CITY Byron	SECTION 26	TOWNSHIP 18N	RANGE 1E
--	---------------------------------	---------------	--	---------------	-----------------	-------------



RE-ESTABLISHED

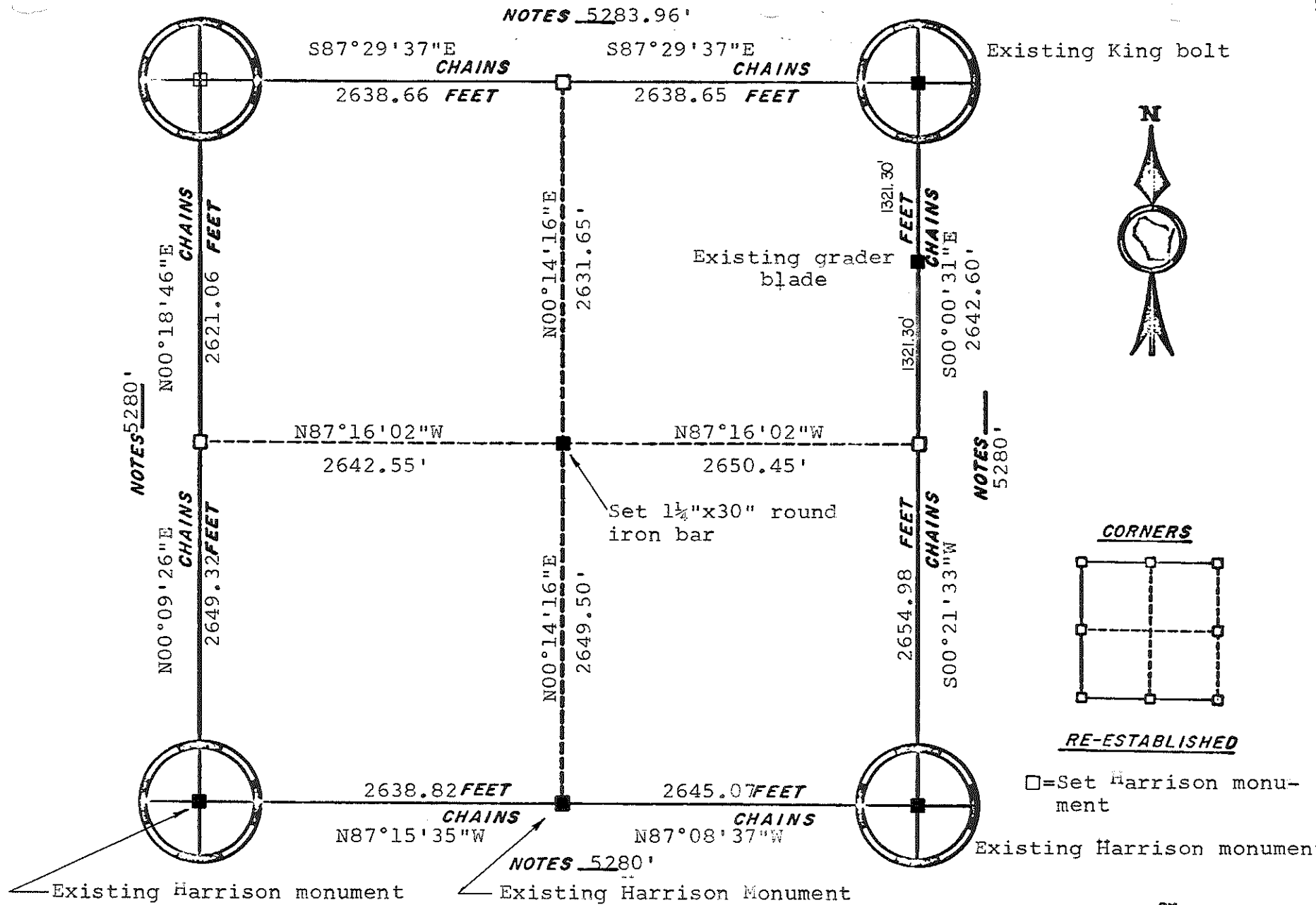
□ = Harrison monument set

Existing Harrison monument

ORIGINAL SURVEY DATA

BY _____
DATE 28 Nov., 1977

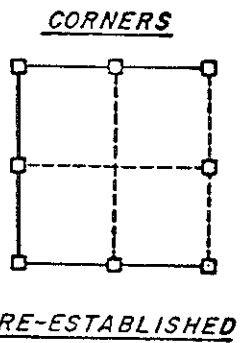
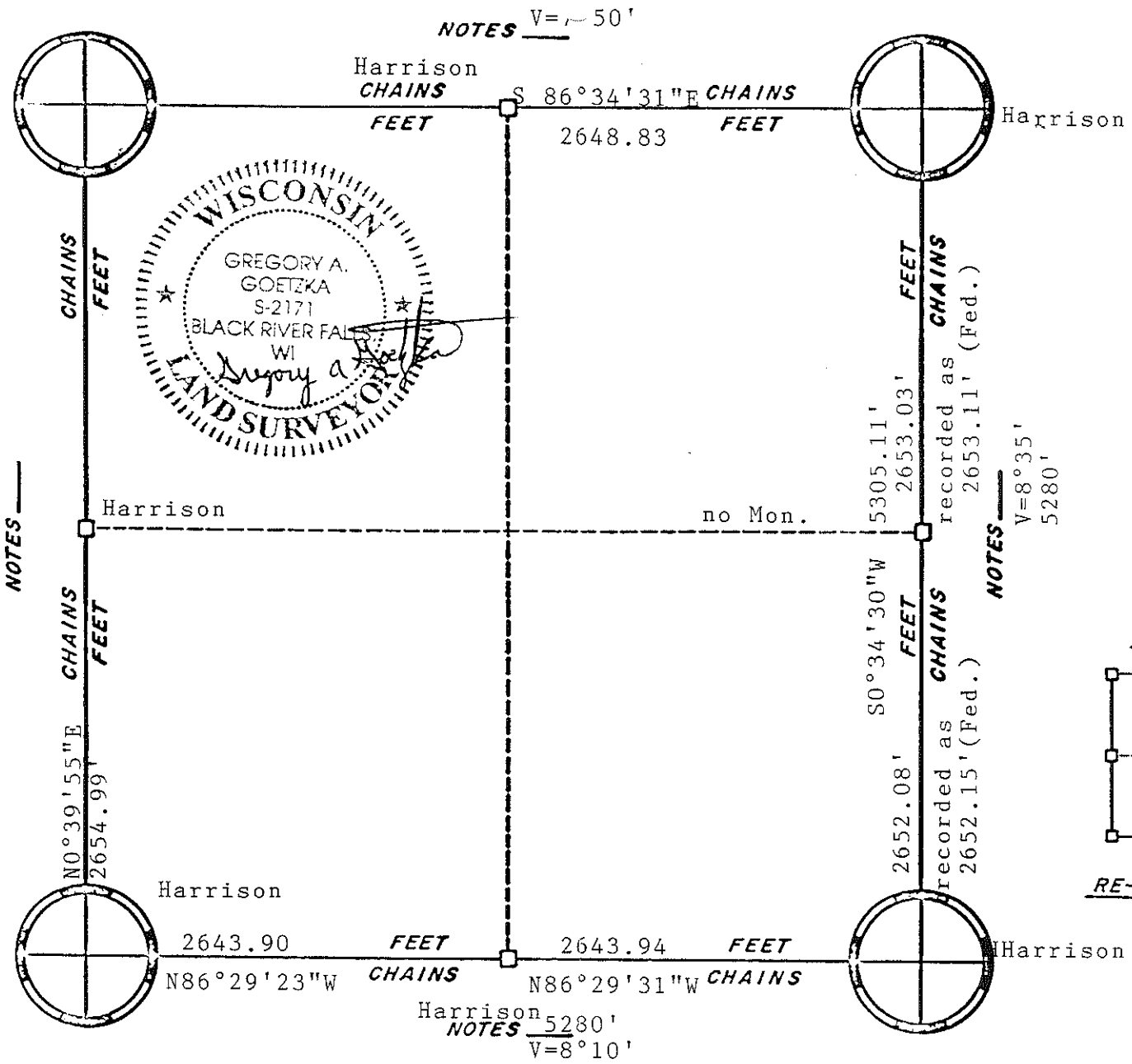
SURVEYED BY L.A. Feddersen M.R. Heidecke	CONTRACT DATE November, 1977	COUNTY MONROE _____	TOWN- XXXXXX Byron	SECTION 33	TOWNSHIP 18N	RANGE 1E
--	---------------------------------	------------------------	----------------------------------	---------------	-----------------	-------------



ORIGINAL SURVEY DATA

BY _____
 DATE 28 Nov., 1977

SURVEYED BY L.A. Feddersen M.R. Heidecke	CONTRACT DATE November, 1977	COUNTY MONROE _____	TOWN XIX RANGE CXXX Byron	SECTION 34	TOWNSHIP 18N	RANGE 1E
--	---------------------------------	------------------------	---	---------------	-----------------	-------------



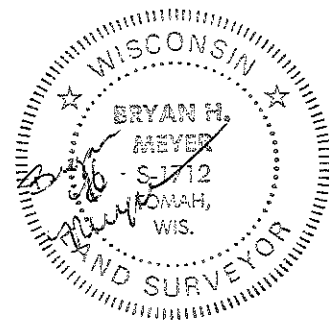
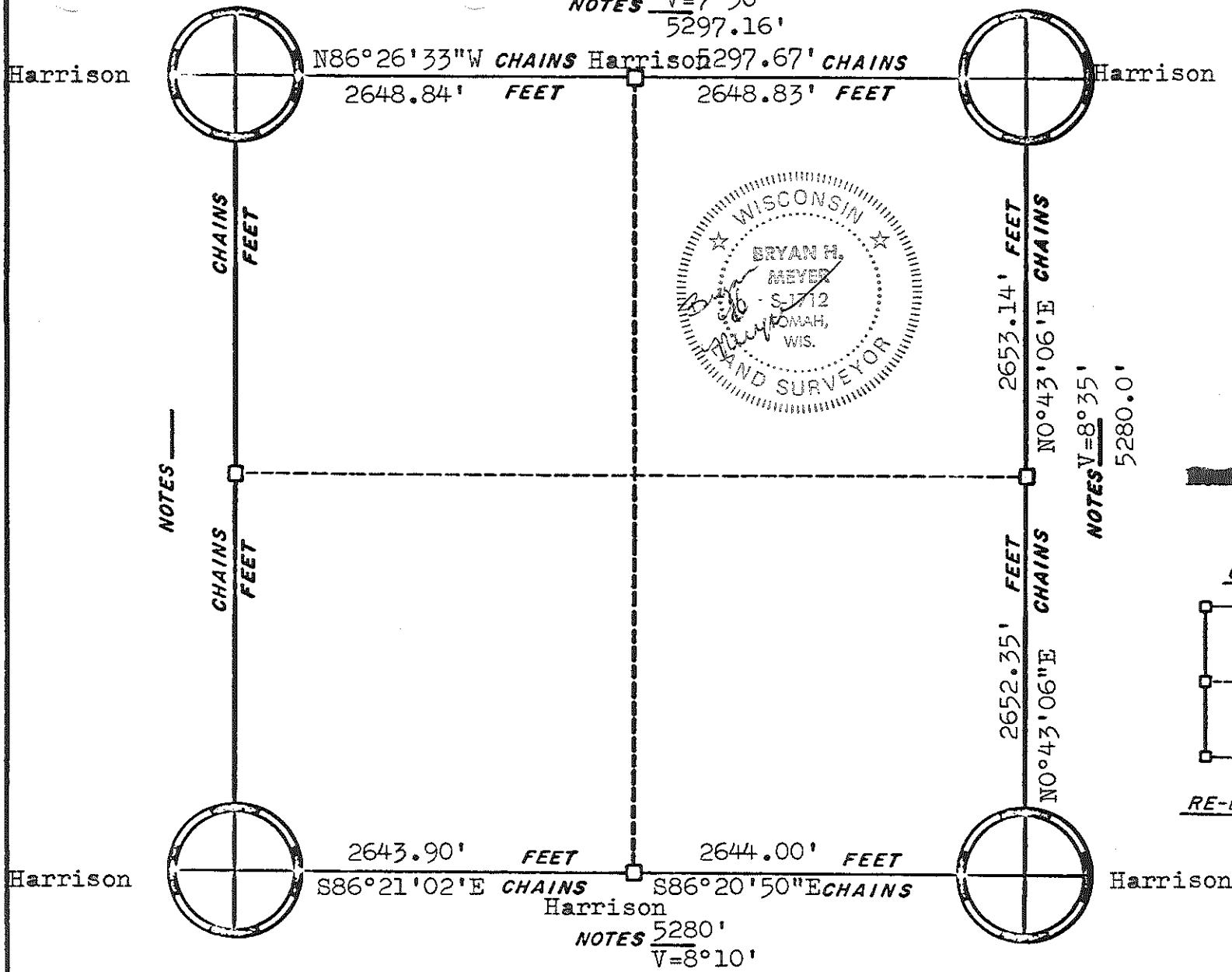
ORIGINAL SURVEY DATA

BY *G. A. Goetzka*

DATE 10/13/99

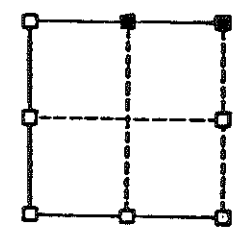
SURVEYED BY HO-CHUNKNATION Housing	CONTRACT DATE 7 7-27-99	COUNTY MONROE	TOWN-VILLAGE-CITY Byron	SECTION 35	TOWNSHIP 18N	RANGE 1E
--	----------------------------	------------------	----------------------------	---------------	-----------------	-------------

NOTES $V=7^{\circ}50'$
5297.16'



G.S. 1-02-90

CORNERS



RE-ESTABLISHED

NOTES $V=8^{\circ}35'$
5280.0'

NOTES _____

ORIGINAL SURVEY DATA

BY *B. Meyer*

DATE 1/12/83

SURVEYED BY H.A. Sime & Associates	CONTRACT DATE February, 1982	COUNTY MONROE	TOWN-VILLAGE-CITY Byron	SECTION 35	TOWNSHIP 18N	RANGE 1E
--	---------------------------------	------------------	----------------------------	---------------	-----------------	-------------

5247.0'

NOTES $V=8^{\circ}25'$

Harrison

S84°57'12"E CHAINS

2644.63' FEET

S86°50'08"E CHAINS

2581.44' FEET

Harrison

Harrison

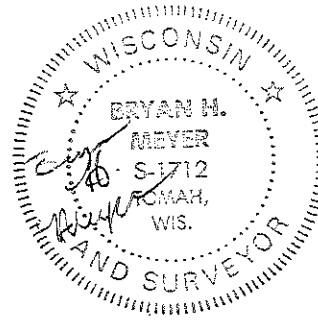
5280.0'
NOTES $V=8^{\circ}35'$

N00°43'06"E CHAINS

2653.14' FEET

N00°43'06"E CHAINS

2652.35' FEET



5280.0'
NOTES $V=8^{\circ}20'$

S00°01'00"W CHAINS

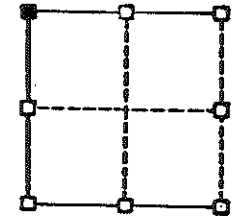
2633.31' FEET

S00°01'00"W CHAINS

2633.31' FEET

Harrison

CORNERS



RE-ESTABLISHED

2643.89'

N86°20'48"W CHAINS

FEET

2644.01'

N86°20'46"W CHAINS

FEET

Harrison

Harrison

Harrison

NOTES $V=8^{\circ}25'$

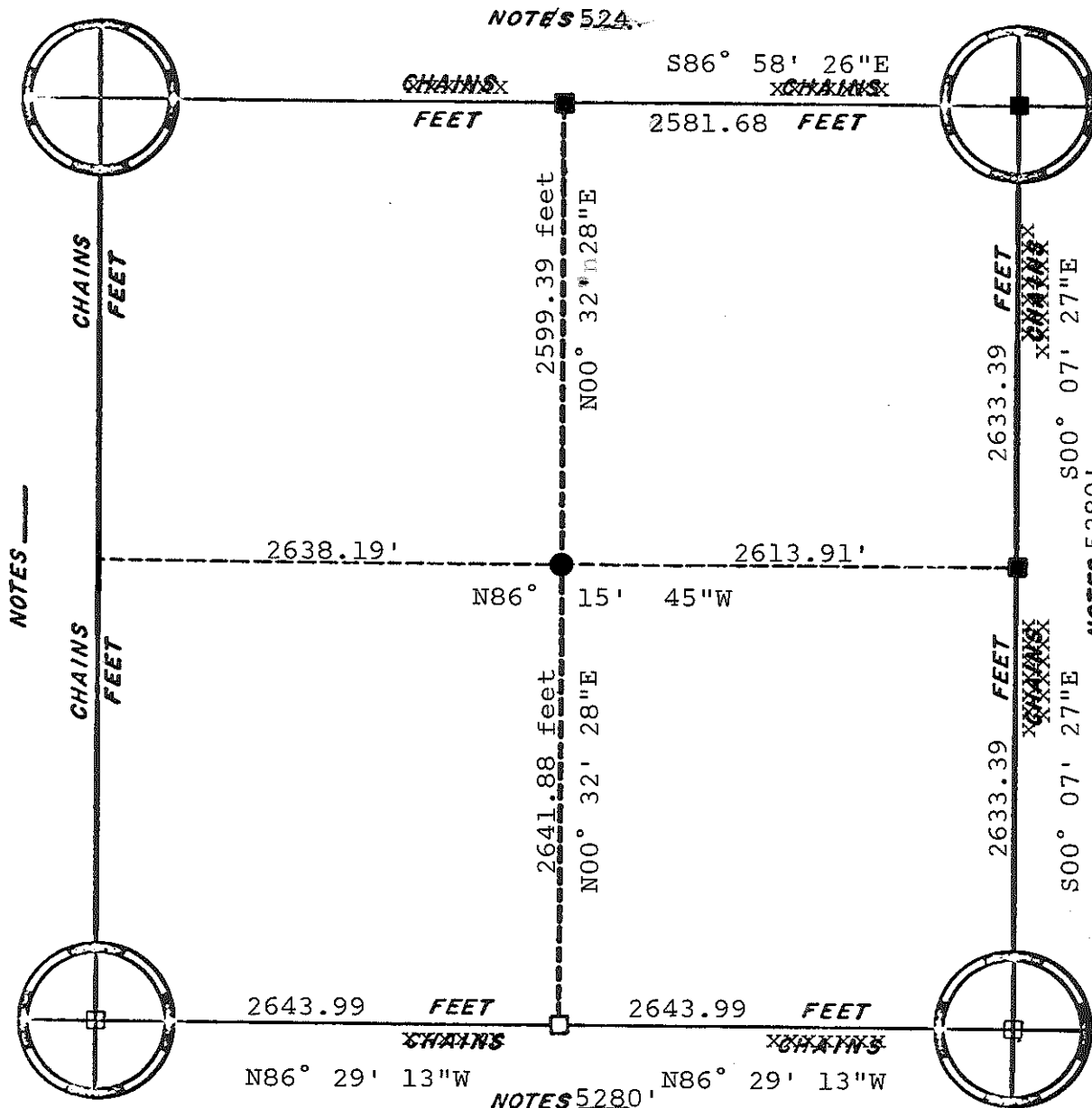
5280.0'

ORIGINAL SURVEY DATA

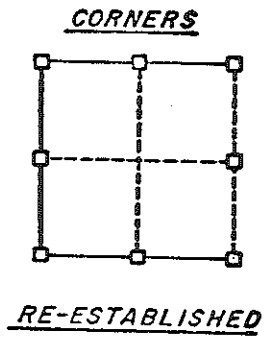
BY *B. Meyer*

DATE 1/12/83

SURVEYED BY H.A. Sime & Associates	CONTRACT DATE February, 1982	COUNTY MONROE	TOWN- BYRON Byron	SECTION 36	TOWNSHIP 18N	RANGE 1E
--	---------------------------------	---------------	---------------------------------	---------------	-----------------	-------------



- Set 1 1/4" x 30" Rd. iron bar.
- Set Harrison Monu.
- Existing Harrison Monu.



ORIGINAL SURVEY DATA

BY _____
 DATE May 22, 1979

SURVEYED BY Feddersen & Heidecke	CONTRACT DATE	COUNTY MONROE	TOWN-VILLAGE-CITY Byron	SECTION 36	TOWNSHIP 18N	RANGE 1E
--	---------------	---------------	----------------------------	---------------	-----------------	-------------