

# 40 / 34

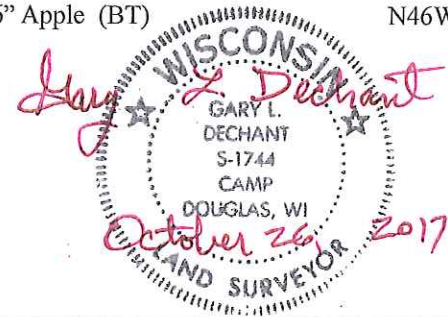
**U.S. PUBLIC LAND CORNER  
MAINTENANCE**

**Corner ID : E1/4 Sec. 12, T18N-R4W**

**21804122000**

<u>FIELD DATE</u>	<u>CREW</u>	<u>MONUMENT TYPE</u> -----
September 27, 2017	Zachariah P. Dechant Gary L. Dechant	Existing Harrison intact, down 12", 30 west & 2' north of SW corner of house @ 8612 CTH "Q"

<u>References:</u>	<u>Bearing</u>	<u>Distance</u>
1) Set 3/4" x 24" round iron bar, down 6", 12' west of SW corner of house	S88E	18.22'
2) Set 3/4"x24" round iron bar, down 6", 10' east of 24" Maple	S16E	46.92
3) Set 3/4" x24" round iron bar, down 6", 6' west of 12" Maple	S42W	36.02'
4) Set 3/4"x24" round iron bar, down 6", 5' SW of 16" Apple (BT)	N46W	11.61'



I, William C. Jung, do hereby certify that on the 6th day of November 1978, I found ~~(evidence)~~ (no evidence) of the W<sup>1</sup>/<sub>4</sub> corner of Section 7, T 18 N, R 3 W, Fourth Principal Meridian, and I re-established said corner according to the Wisconsin Statutes as shown and described hereon.

Dated this 4th day of Jan. 1979.

William C. Jung, R.L.S. 1323

County Surveyor's Office  
Title

History of original corner establishment:

No known recorded history since the original government survey

Description of corner evidence found:

Set the corner equidistant and on line between the section corners.

Description of corner and witness monuments, references and accessories used to perpetuate the original or re-established location of this corner:

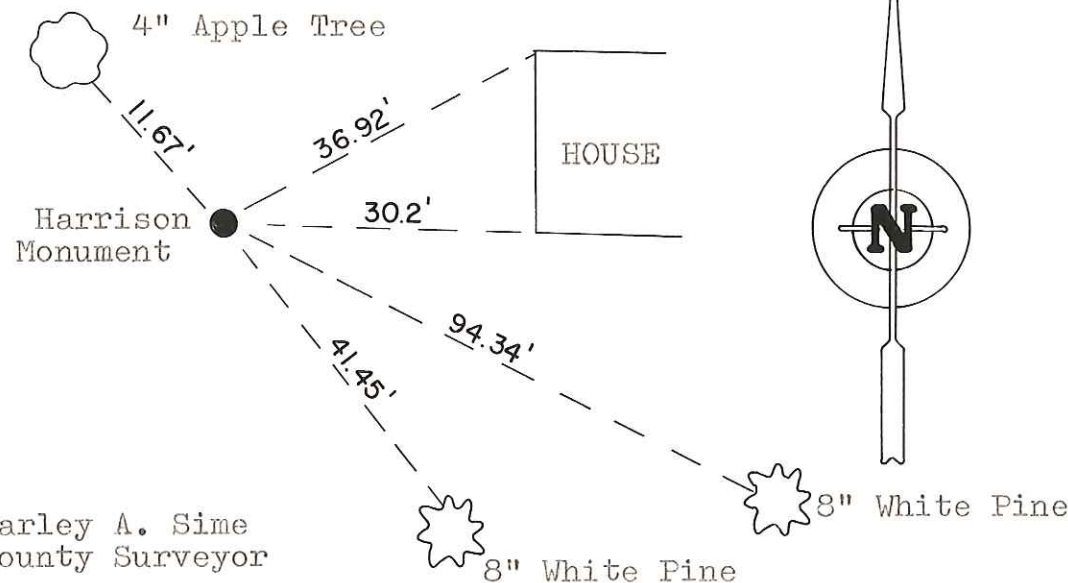
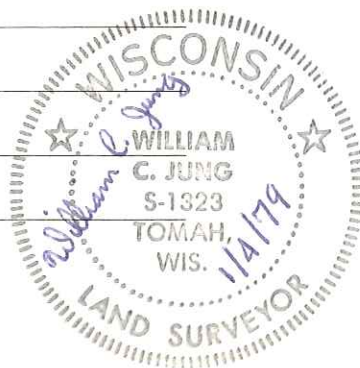
Set Harrison in lawn, flush.

(Trees are not blazed and no N&C's set)

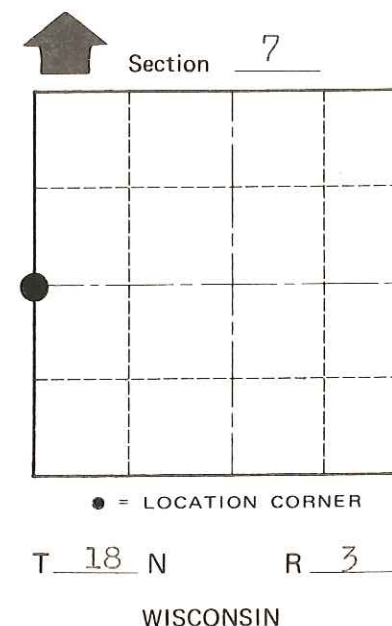
Witnesses to corner location:

G. Dechant

L. Lakowske



See Reverse Side For Maintenance



Approved by: Harley A. Sime  
County Surveyor

SURVEY CONTROL ORDER

Horizontal	_____
Vertical	_____

WISCONSIN COORDINATE SYSTEM

Corner	East (X)	North (Y)	Elevation (Z)	Zone
Control Sta. Name				

City, Village or Town Lafayette

County of Monroe

COUNTY SURVEYOR FORM NO. 1