

CERTIFICATE

CERTIFIED LAND CORNER

No. 53

21804120000

I, Lawrence A. Feddersen, do hereby certify that on the 28th day of September 19 78, I found (evidence) (no evidence) of the Northwest corner of Section 18, T 18 N, R 3 W, Fourth Principal Meridian, and I re-established said corner according to the Wisconsin Statutes as shown and described hereon.

Dated this 3 day of October 1978.

Lawrence A. Feddersen

REGISTERED LAND SURVEYOR S-1226
Title



Description of corner evidence found:

This corner was set at the intersection of two fallen, ancient fences, South and East. There was a large post at the corner that had fallen down. This fence intersection was considered the best possible evidence.

Description of corner and witness monuments, references and accessories used to perpetuate the original or re-established location of this corner:

Witnesses to corner location:

Lawrence A. Feddersen

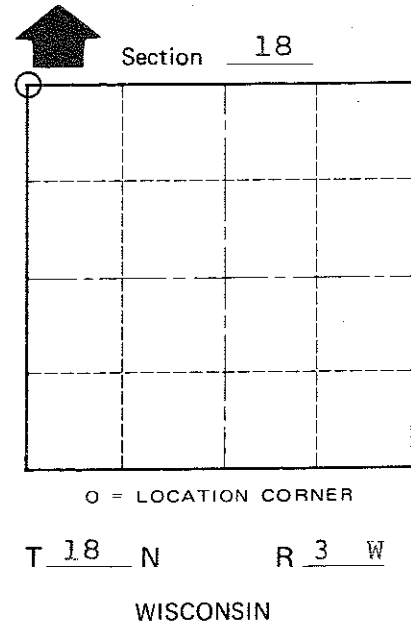
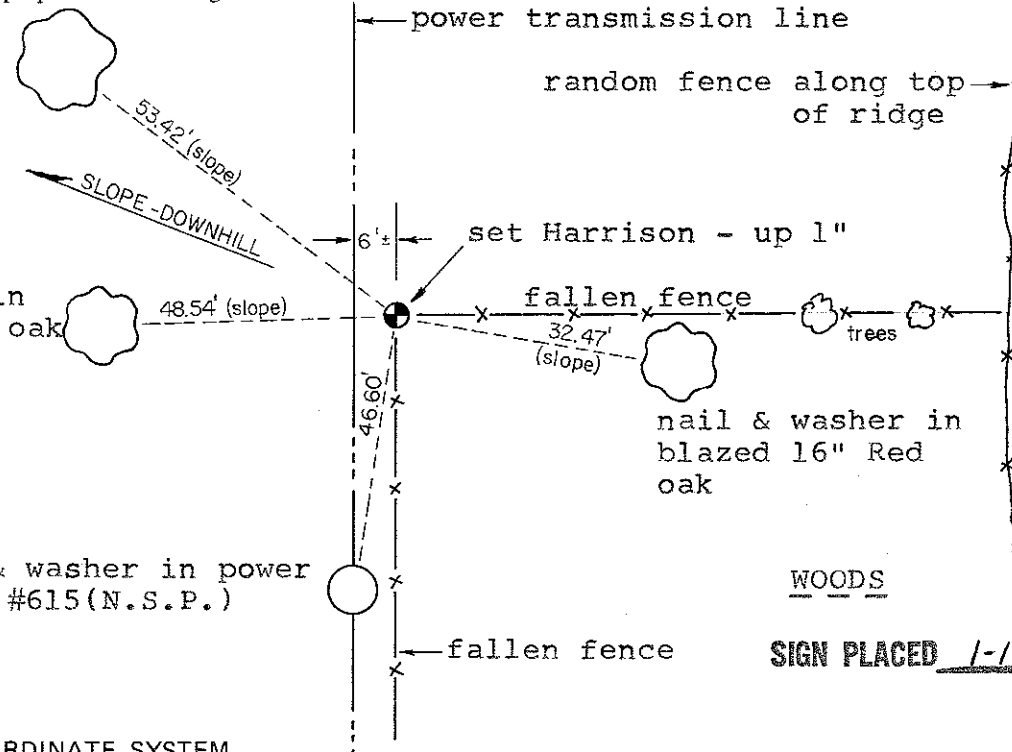
Douglas J. Malliet

Steven R. Towne

nail & washer in blazed 24" Red oak

nail & washer in blazed 13" Red oak

nail & washer in power pole, #615(N.S.P.)



COUNTY SURVEYOR FORM NO. 1

SURVEY CONTROL ORDER

Horizontal	_____
Vertical	_____

WISCONSIN COORDINATE SYSTEM

Corner	East (X)	North (Y)	Elevation (Z)	Zone
Control Sta. Name				

~~City, Village or Town of~~ LAFAYETTE
County of MONROE

SIGN PLACED 1-15-92