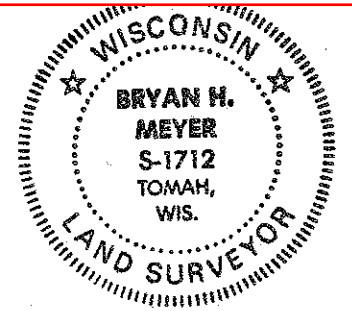


21804132000



Bryan H. Meyer
H. A. Sime and Associates
P. O. Box 705
Tomah, Wisconsin 54660
Phone: (608)-372-5392

I, Bryan H. Meyer, do hereby certify that on the 28th day of July 19 93, I found ~~(no evidence)~~ (no evidence) of the West 1/4 corner of Section 18, T 18 N, R 3 W Fourth Principal Meridian, and I re-established said corner according to the Wisconsin Statutes as shown and described hereon.

Dated this 29th day of July 19 93.

Bryan H. Meyer

Deputy County Surveyor
Title

History of corner establishment since Original Government Survey

Although his notes do not specifically state that he was at this corner, Fred Holden, Monroe County Surveyor, was working in Section 13, T18N, R4W, and probably utilized this corner in his June, 1908 survey.

Description of corner evidence found:

I re-established this corner on line and equidistant between the Northwest and Southwest corners of Section 18, as per law.

COUNTY SURVEYOR FORM NO. 1

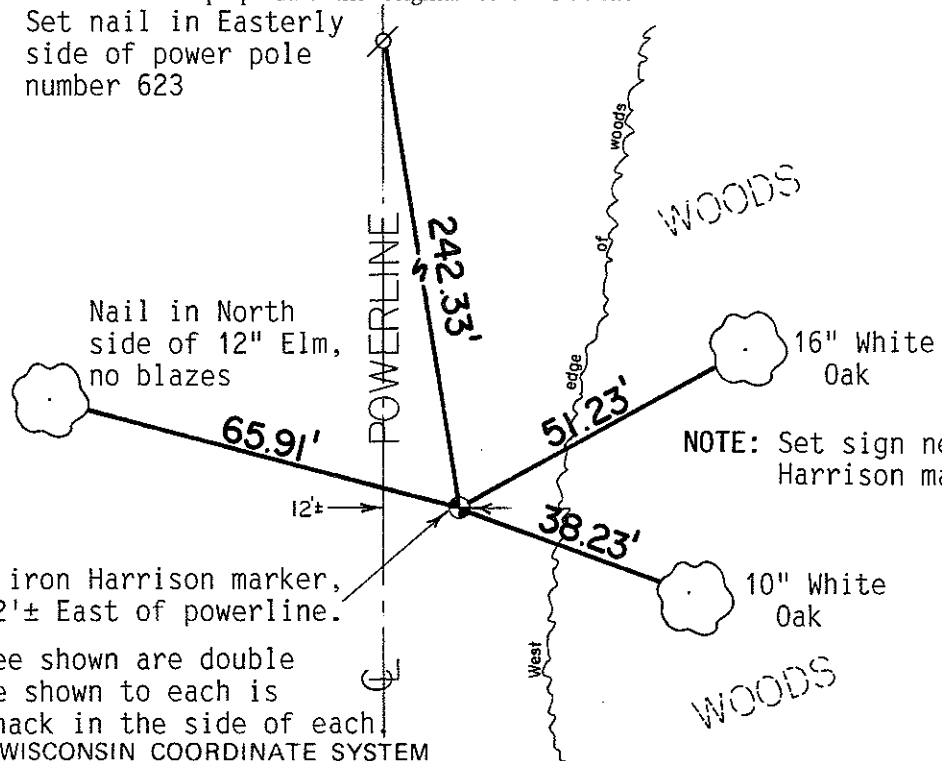
Description of corner and witness monuments, references and accessories used to perpetuate the original or re-established location of this corner:

Crew: Meyer, Lobe
Date: July 28, 1993 - 10:30 A.M.
Weather: Overcast, Breezy, 75°±
Witnesses to corner location:

Bryan H. Meyer

Rick Lobe

Set nail in Easterly side of power pole number 623



Nail in North side of 12" Elm, no blazes

16" White Oak

NOTE: Set sign next to Harrison marker.

Set cast iron Harrison marker, up 4", 12'± East of powerline.

10" White Oak

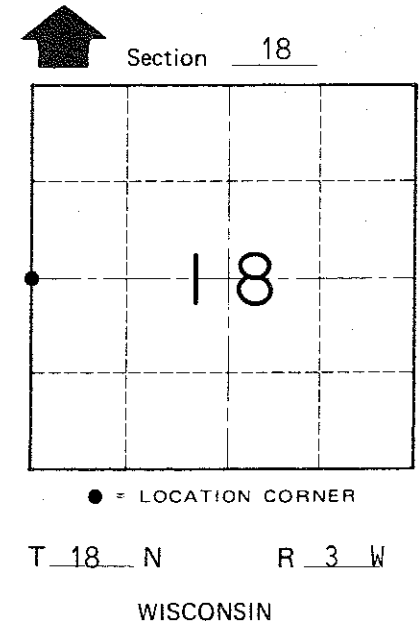
Both Oak bearing tree shown are double blazed. The distance shown to each is to a nail set in a hack in the side of each.

WISCONSIN COORDINATE SYSTEM

SURVEY CONTROL ORDER

Horizontal	_____
Vertical	_____

Corner	East (X)	North (Y)	Elevation (Z)	Zone
Control Sta. Name				



~~Village of~~ Town of LaFayette

County of Monroe