

21804150020

I, William C. Jung, do hereby certify that on the 19th day of October 1985, I found (evidence) ~~(no evidence)~~ of the South 1/4 corner of Section 15, T18 N, R 4 W, Fourth Principal Meridian, and I re-established said corner according to the Wisconsin Statutes as shown and described hereon.

History of corner establishment since Original Government Survey

Fred Zietlow and Duane Marten set an iron bar at the occupied corner in March of 1972.

Description of corner evidence found:

I found the iron bar on the ground near the occupied corner. It appeared to have been "kicked" out of the ground by the frost. I reset the bar at the corner and accepted the occupied corner as the best available evidence of the original government corner. For a final monument, I pounded the old small bar down into the ground and set a 1 1/4" x 30" round iron bar on the South side of the small one. The top of the 1 1/4" bar is the corner. I did not set a Harrison because of tree roots.

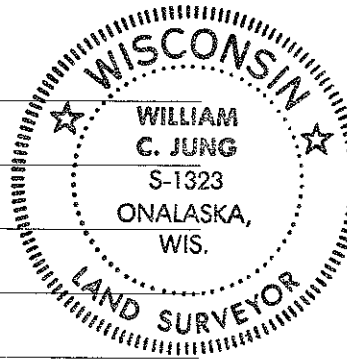
Dated this 16th day of Nov. 1985.

William C. Jung
Registered Land Surveyor 1323
Title

Description of corner and witness monuments, references and accessories used to perpetuate the original or re-established location of this corner:

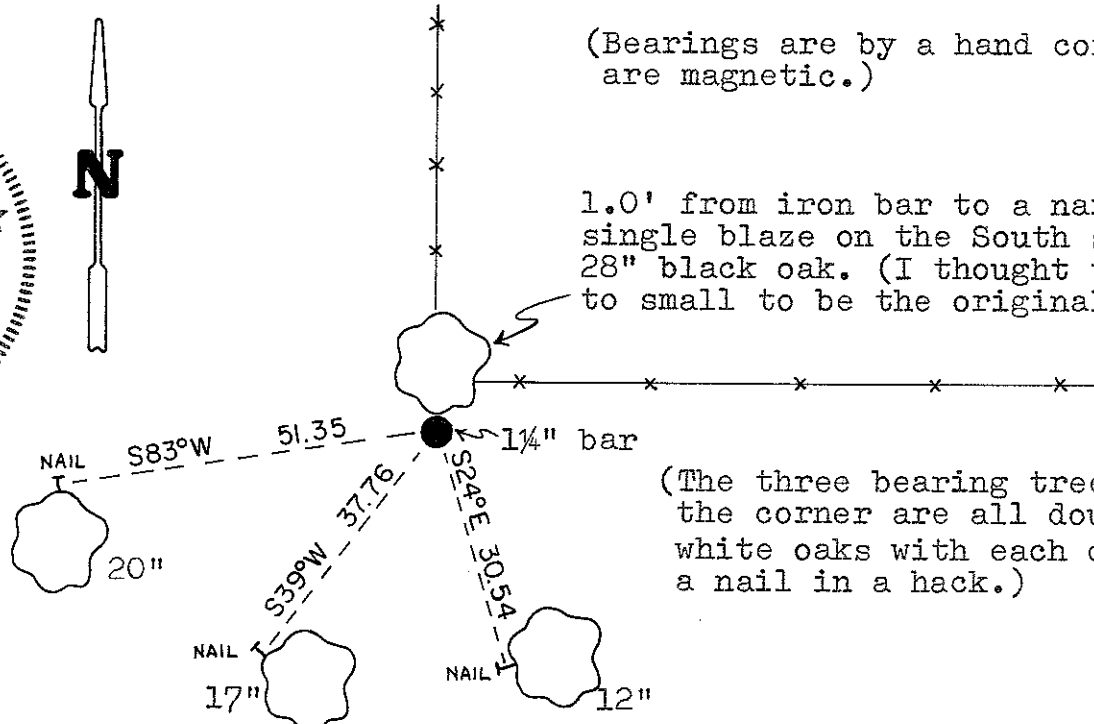
Witnesses to corner location:

William C. Jung
Bryan Meyer
Dallas Wilhite

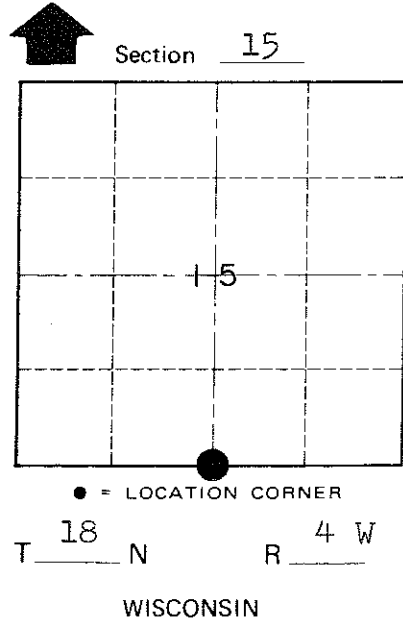


(Bearings are by a hand compass and are magnetic.)

1.0' from iron bar to a nail in a single blaze on the South side of a 28" black oak. (I thought this oak to small to be the original.)



(The three bearing trees South of the corner are all double blazed white oaks with each distance to a nail in a hack.)



Approved: Harley Sime
County Surveyor

SURVEY CONTROL ORDER

| | |
|------------|-------|
| Horizontal | _____ |
| Vertical | _____ |

WISCONSIN COORDINATE SYSTEM

| Corner | East (X) | North (Y) | Elevation (Z) | Zone |
|-------------------|----------|-----------|---------------|------|
| Control Sta. Name | | | | |

City, Village or Town Little Falls
County of Monroe
Wisconsin

COUNTY SURVEYOR FORM NO. 1