

2180416000

I, William C. Jung, do hereby certify that on the 26th day of October 1985, I found (evidence) (no evidence) of the Southeast corner of Section 16, T 18 N, R 4 W, Fourth Principal Meridian, and I re-established said corner according to the Wisconsin Statutes as shown and described hereon.

Dated this 16th day of Nov. 1985.

William C. Jung

Registered Land Surveyor 1323
Title

History of corner establishment since Original Government Survey

Schroeder (or Kenyon?) was at this corner in April of 1893. Fred Zietlow and Duane Marten set an iron bar at the occupied corner in March of 1972. I used this bar as the corner in November of 1978.

Description of corner evidence found:

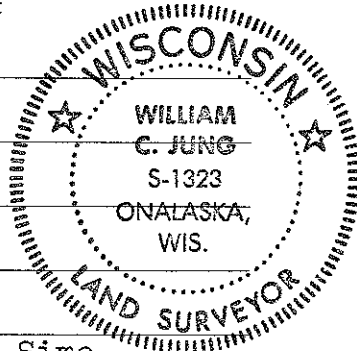
I found the iron bar at the occupied corner and accepted it as the best available evidence of the original government corner. I removed the bar and replaced it with a Harrison marker.

Description of corner and witness monuments, references and accessories used to perpetuate the original or re-established location of this corner:

Witnesses to corner location:

William C. Jung

Bryan Meyer



Approved: Harley Sime
County Surveyor

(Both white oaks and the hickory are double blazed with each distance to a nail in a hack.)

SURVEY CONTROL ORDER

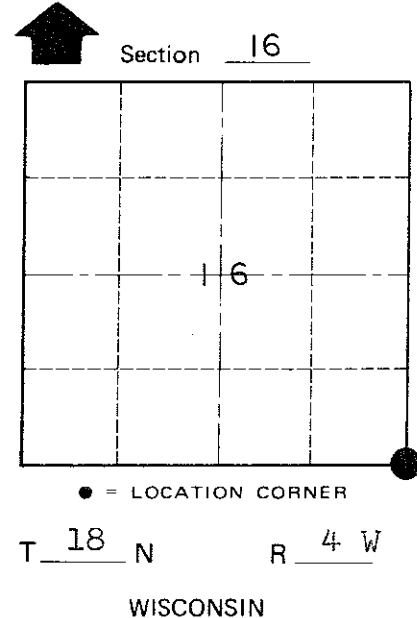
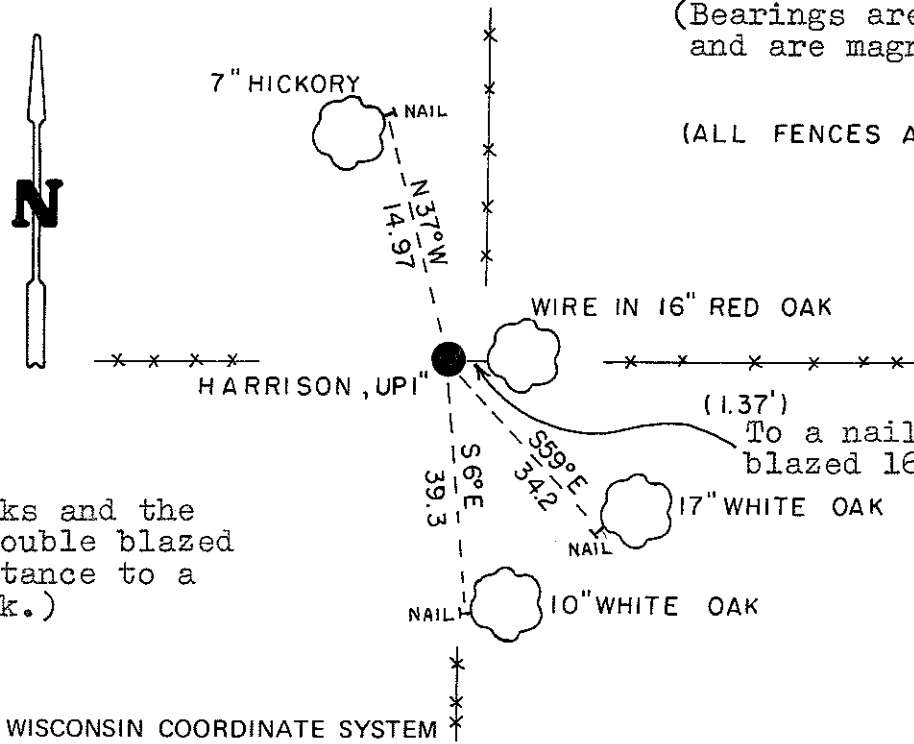
Horizontal	_____
Vertical	_____

WISCONSIN COORDINATE SYSTEM

Corner	East (X)	North (Y)	Elevation (Z)	Zone
Control Sta. Name				

(Bearings are by a hand compass and are magnetic.)

(ALL FENCES ARE DOWN.)



City, Village or Town Little Falls
County of Monroe
Wisconsin

COUNTY SURVEYOR FORM NO. 1