

CERTIFICATE

CERTIFIED LAND CORNER

No. 56

21804172000

I, William C. Jung, do hereby certify that on the 31st day of October 1978, I found (evidence) (no evidence) of the 1/4 corner of Section 16, T18 N, R4 W Fourth Principal Meridian, and I re-established said corner according to the Wisconsin Statutes as shown and described hereon.

History of original corner establishment:

Schroeder was at this corner in April of 1893, as was Holden in June of 1907.

Description of corner evidence found:

Accepted the occupied fence intersection as best available evidence.

Dated this 5th day of Jan. 1979.

William C. Jung R.L.S. 1323

Crew Chief, County Surveyor's Office

COUNTY SURVEYOR FORM NO. 1

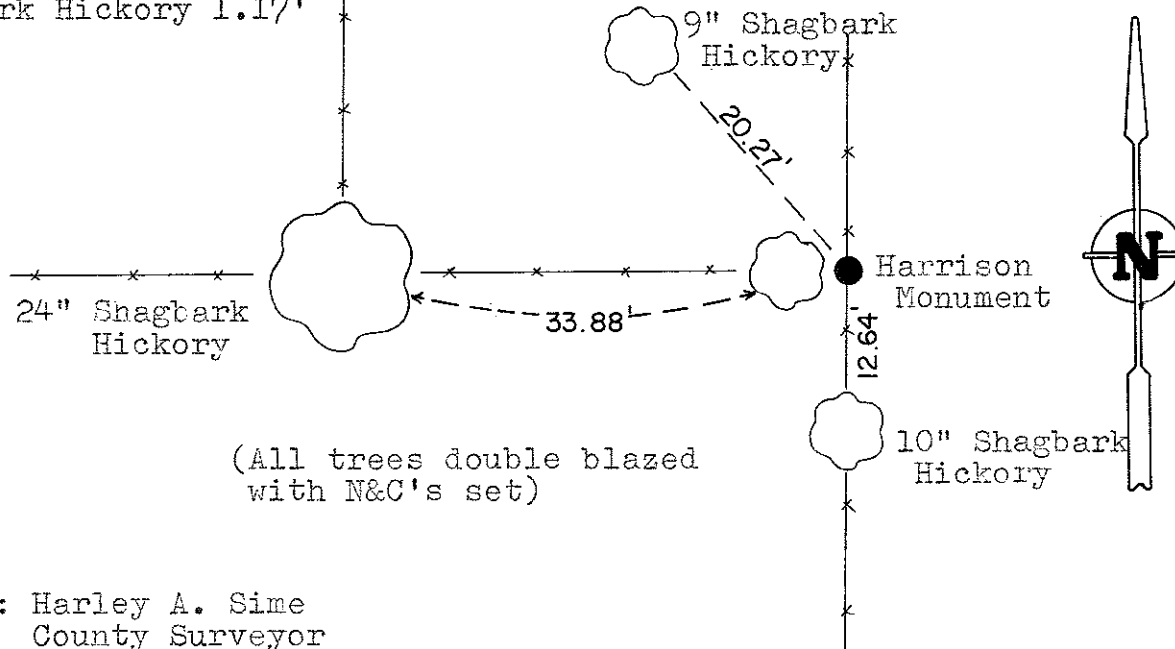
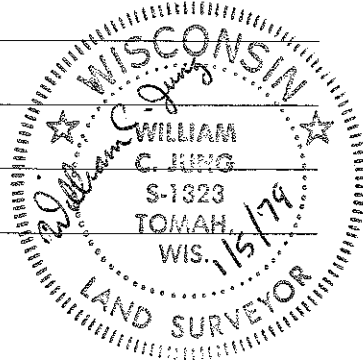
Description of corner and witness monuments, references and accessories used to perpetuate the original or re-established location of this corner:

Set Harrison Monument, up 1", bottom 9" had to be broken off because of tree roots. 6" Shagbark Hickory 1.17'

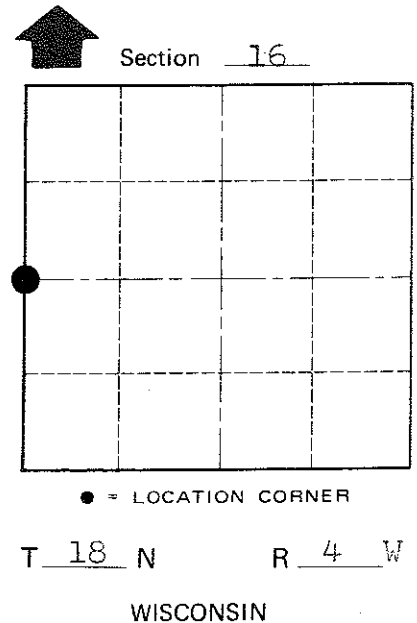
Witnesses to corner location: West of corner.

W. Jung

G. Dechant



(All trees double blazed with N&C's set)



SURVEY CONTROL ORDER

Table with 2 rows: Horizontal, Vertical

Approved by: Harley A. Sime, County Surveyor

WISCONSIN COORDINATE SYSTEM

Table with 5 columns: Corner, East (X), North (Y), Elevation (Z), Zone

City, Village or Town Little Falls

County of Monroe