

CERTIFICATE

CERTIFIED LAND CORNER

No. 72

21804180020

I, K. DON PEDERSON, do hereby certify that on the 5TH day of FEBRUARY, 2002, I found ~~(evidence)~~ (no evidence) of the S. 1/4 corner of SEC. 18, T 18 N, R 4 W Fourth Principal Meridian, and I re-established said corner according to the Wisconsin Statutes as shown and described hereon.

Dated this 28TH day of MARCH, 2002.

K. Don Pederson
Registered Land Surveyor
Title

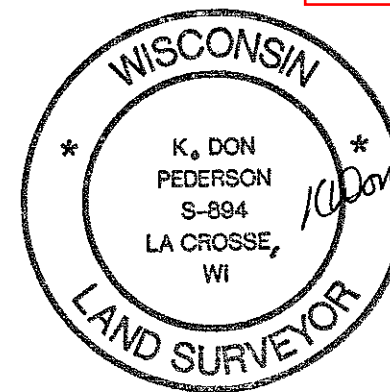
History of corner establishment since Original Government Survey

DUNN SET ORIGINAL CORNER DECEMBER 1846.
FRED HOLDEN WAS AT THIS CORNER IN APRIL 1899.

Description of corner evidence found:

NO ORIGINAL EVIDENCE FOUND.

SET CORNER PROPORTIONED BETWEEN SOUTHEAST AND SOUTHWEST CORNERS OF SECTION. FENCE CORNER SOUTH MEASURES WITHIN 1.4' OF V. 212 P. 562 DISTANCE. (BY SUBTRACTION ASSUMING 1320')

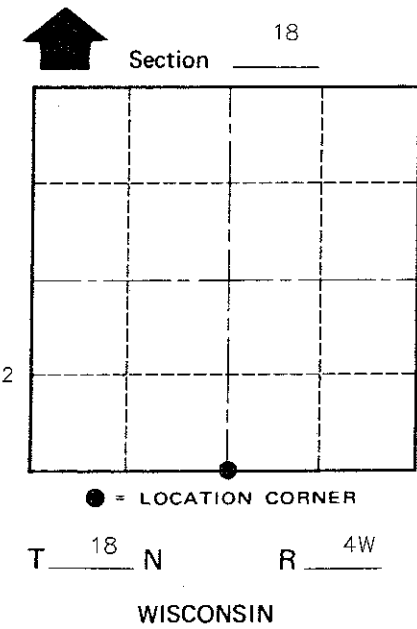
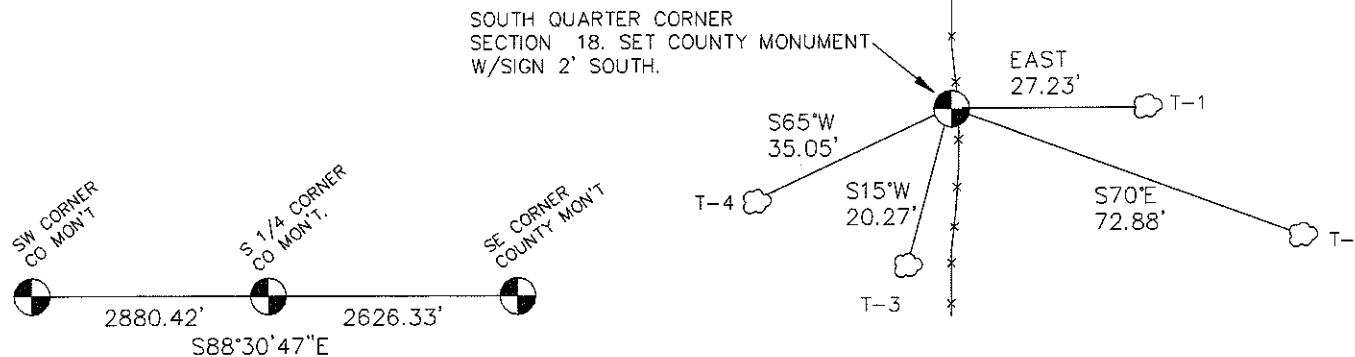


Description of corner and witness monuments, references and accessories used to perpetuate the original or re-established location of this corner:

Witnesses to corner location:

K. DON PEDERSON
PAUL R. CHAFER

NOTE:
BEARINGS ARE MAGNETIC, AND
DISTANCES ARE SLOPE.



- T-1 5" NAIL IN HACK @ BASE NW SIDE 7" HICKORY
- T-2 5" NAIL IN HACK @ BASE S/S 18" RED OAK
- T-3 5" NAIL IN HACK @ BASE E/S 12" RED OAK
- T-4 5" NAIL IN HACK @ BASE N/S 5" SAWED STUMP OF TRIPLE RED OAK TREE-TWIN 4" AND 5" SAWED STUMP
- *-* MEANDERING FENCE LINE 6' EAST AT CORNER (ON LINE NORTH AND SOUTH OF CORNER)

WISCONSIN COORDINATE SYSTEM

SURVEY CONTROL ORDER

Horizontal	_____
Vertical	_____

Corner	East (X)	North (Y)	Elevation (Z)	Zone
Control Sta. Name				

City, Village or Town LITTLEN FALLS
County of MONROE

COUNTY SURVEYOR FORM NO. 1