

CERTIFICATE

CERTIFIED LAND CORNER

No. 71

21804180000

I, K. DON PEDERSON, do hereby certify that on the 8TH day of MAY, 2001, I found (evidence) (no evidence) of the SE corner of SEC. 18, T 18 N, R 4 W Fourth Principal Meridian, and I re-established said corner according to the Wisconsin Statutes as shown and described hereon.

Dated this 28TH day of MARCH, 2002.

K. Don Pederson
Registered Land Surveyor
Title

History of corner establishment since Original Government Survey

DUNN SET ORIGINAL CORNER DECEMBER 1846.
FRED HOLDEN WAS AT THIS CORNER JUNE 1907.

Description of corner evidence found:

NO ORIGINAL EVIDENCE FOUND.

SET CORNER AT OCCUPIED FENCE CORNER. FENCE CORNER SOUTH MEASURES WITHIN 1' OF VOLUME 263 PAGE 381 DISTANCE.

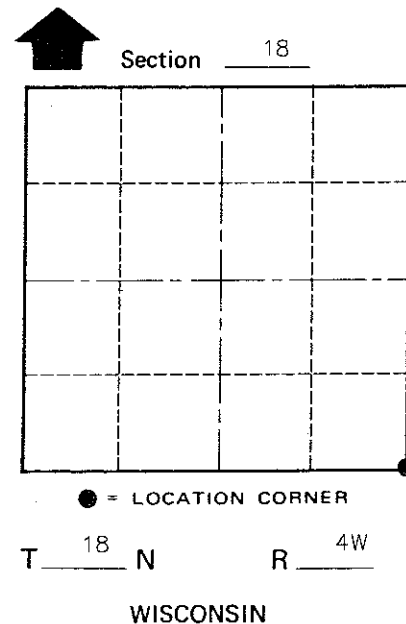
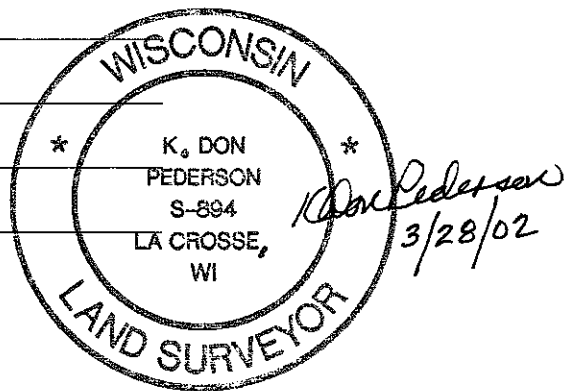
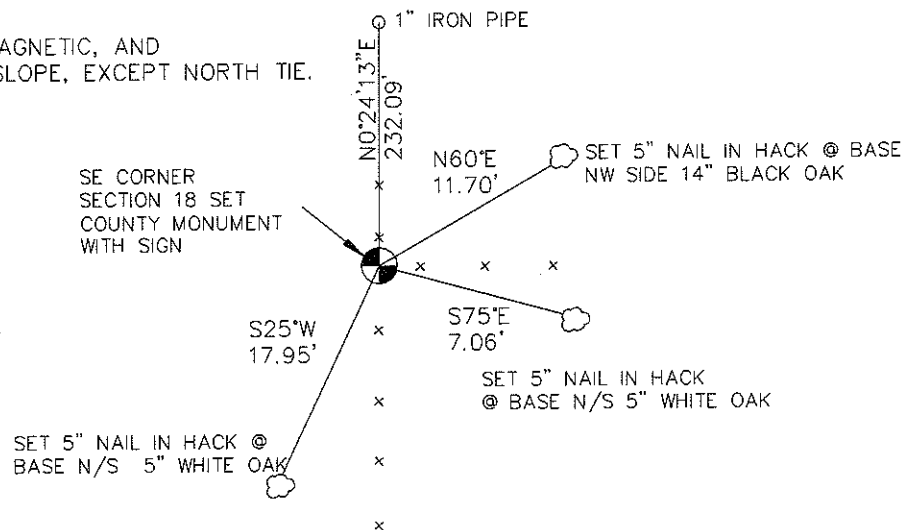
Description of corner and witness monuments, references and accessories used to perpetuate the original or re-established location of this corner:

Witnesses to corner location:

K. DON PEDERSON

PAUL R. CHAFER

NOTE:
BEARINGS ARE MAGNETIC, AND
DISTANCES ARE SLOPE, EXCEPT NORTH TIE.



SURVEY CONTROL ORDER

Horizontal	_____
Vertical	_____

WISCONSIN COORDINATE SYSTEM

Corner	East (X)	North (Y)	Elevation (Z)	Zone
Control Sta. Name				

City, Village or Town LITTLE FALLS
County of MONROE

COUNTY SURVEYOR FORM NO. 1