

I, Harley A. Sime, do hereby certify that on the 13th day of July 1981, I found (evidence) (~~was~~) of the W^{1/4} corner of Section 21, T18 N, R4 W Fourth Principal Meridian, and I re-established said corner according to the Wisconsin Statutes as shown and described hereon.

Dated this 15th day of July 1981.

Harley A. Sime, R.L.S. 355

 County Surveyor
 Title

History of corner establishment since Original Government Survey

Fred Holden set a 1" iron bar here in January of 1903.

Description of corner evidence found:

Found Holden's 1" iron bar at a four way fence corner. Was used as the corner and ties were taken. Fits other field evidence well.

21804202000

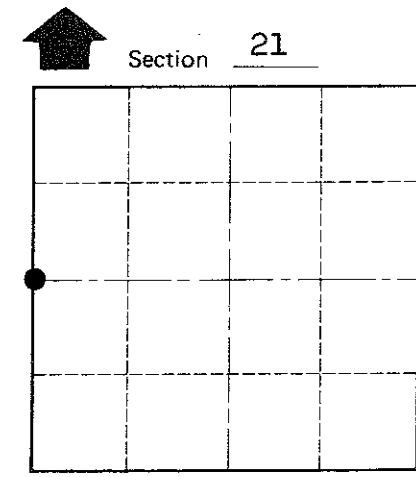
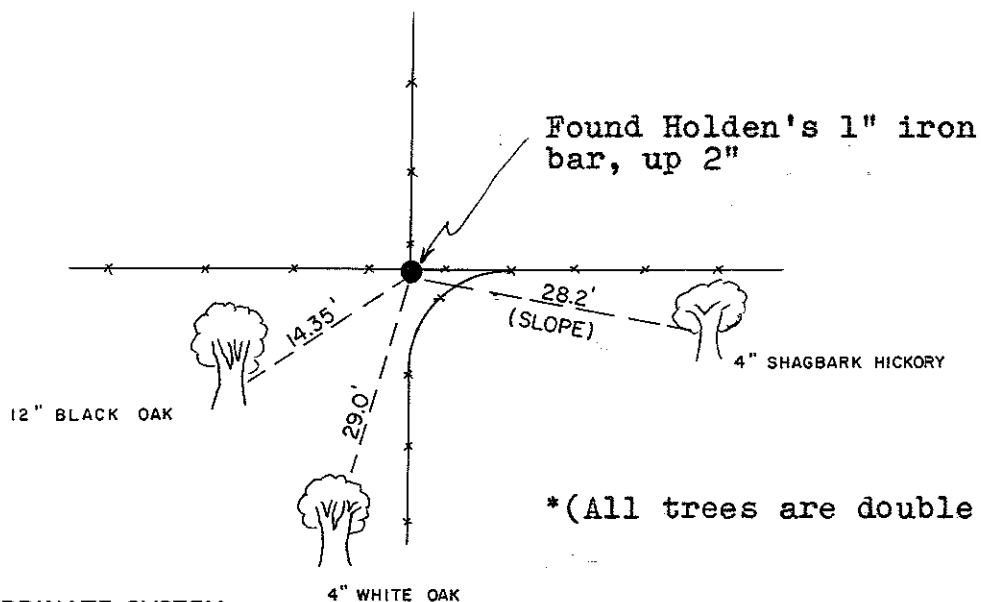
COUNTY SURVEYOR FORM NO. 1

Description of corner and witness monuments, references and accessories used to perpetuate the original or re-established location of this corner:

Witnesses to corner location:

G. Dechant

B. Meyer



Approved: HARLEY A. SIME
MONROE CO, SURVEYOR

SURVEY CONTROL ORDER

Horizontal	_____
Vertical	_____

WISCONSIN COORDINATE SYSTEM

Corner	East (X)	North (Y)	Elevation (Z)	Zone
Control Sta. Name				

(All trees are double blazed with nails set)

~~_____~~ Town Sparta
 County of Monroe