

21804212020

I, Gary L. Dechant, do hereby certify that on the 26th day of October 1984, I found ~~(evidence)~~ (no evidence) of the C¹/₄ corner of Section 21, T 18 N, R 4 W Fourth Principal Meridian, and I re-established said corner according to the Wisconsin Statutes as shown and described hereon.

History of corner establishment since Original Government Survey

Fred Holden was here in January of 1903.

Description of corner evidence found:

Set corner by projecting the line between the W¹/₄ corner (Holden's iron monument) and the SE corner of the SW¹/₄-NW¹/₄ (Corner reestablished using Holden's bearing tree) eastward and intersecting it with a straight line between the N¹/₄ corner and the S¹/₄ corner of Section 21.

Dated this 30th day of Oct. 1984.

Gary L. Dechant

Registered Land Surveyor-1744
Title

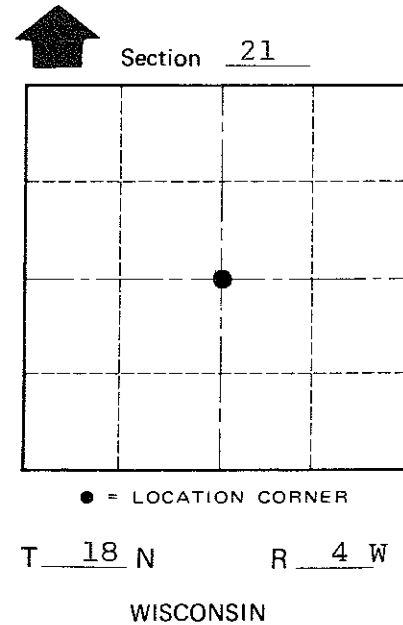
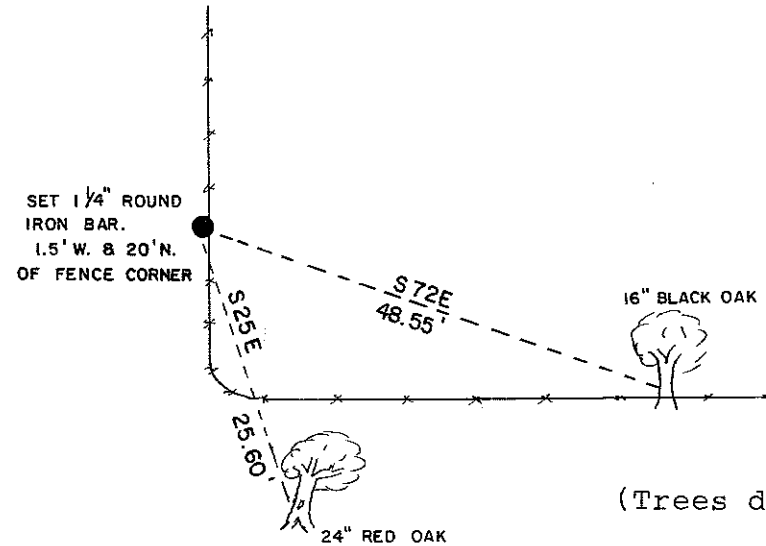
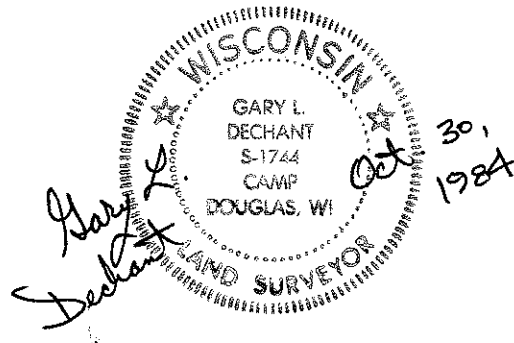
COUNTY SURVEYOR FORM NO. 1

Description of corner and witness monuments, references and accessories used to perpetuate the original or re-established location of this corner:

Witnesses to corner location:

Lawrence A. Feddersen, S-1226

Gary L. Dechant



(Trees double blazed with N&C's)

SURVEY CONTROL ORDER

Horizontal	_____
Vertical	_____

WISCONSIN COORDINATE SYSTEM

Corner	East (X)	North (Y)	Elevation (Z)	Zone
Control Sta. Name				

~~City, Village, or~~ Town Sparta
County of Monroe