

21804212000

I, Garold A. Sime, do hereby certify that on the 5th day of November 1979, I found (evidence) (~~no evidence~~) of the West 1/4 corner of Section 22, T 18 N, R 4 W Fourth Principal Meridian, and I re-established said corner according to the Wisconsin Statutes as shown and described hereon.

History of corner establishment since Original Government Survey

Fred Holden 1903

Description of corner evidence found:

I found a blazed White Oak Northeast of the occupied fence corner. I used this tree to establish the location of the W¹/₄ corner. The bearing and distance given by Fred Holden in 1903 fits the fence corner as shown in the sketch below.

Dated this 21st day of Dec. 1979.

Garold A. Sime

Garold A. Sime, R.L.S. S-1261
Title

Approved: HARLEY A. SIME
MONROE CO. SURVEYOR

COUNTY SURVEYOR FORM NO. 1

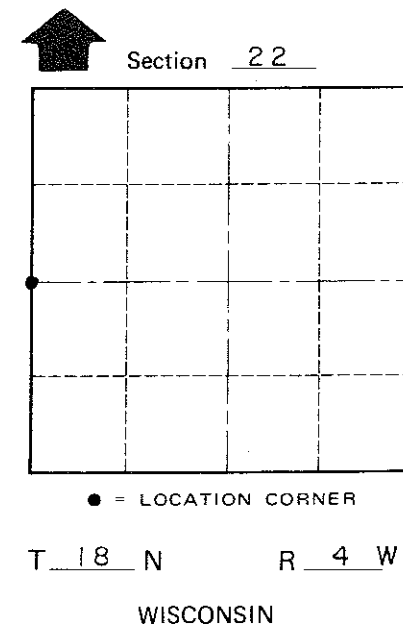
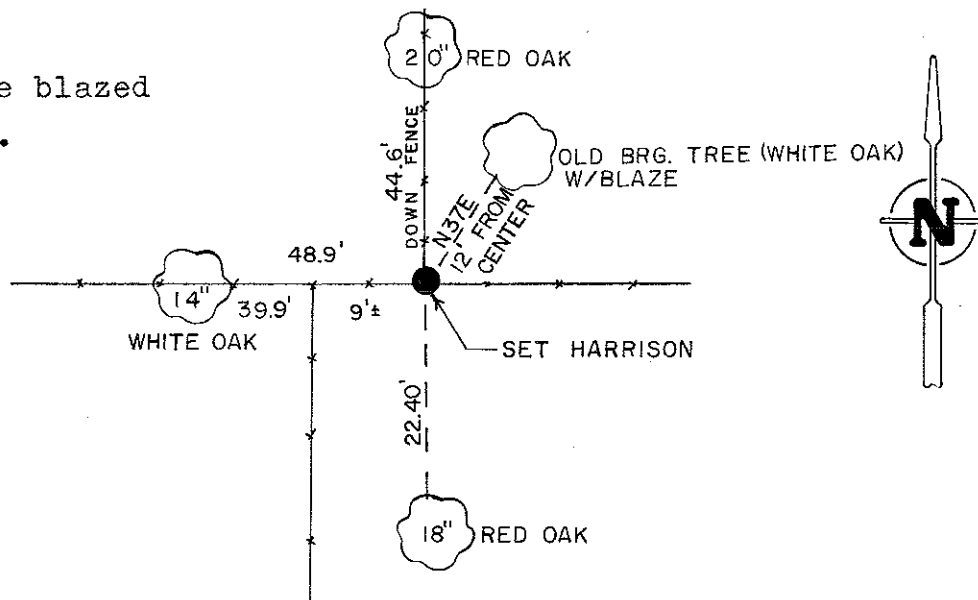
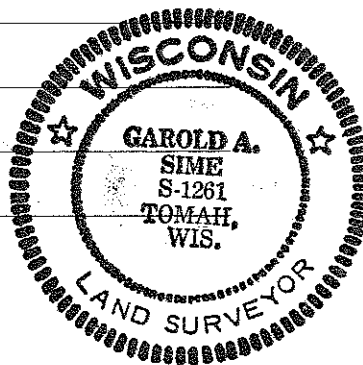
Description of corner and witness monuments, references and accessories used to perpetuate the original or re-established location of this corner:

Witnesses to corner location: Note: New trees double blazed with nail and caps set.

G. Sime

L. Radcliffe

T. Tormoen



SURVEY CONTROL ORDER

Horizontal	_____
Vertical	_____

WISCONSIN COORDINATE SYSTEM

Corner	East (X)	North (Y)	Elevation (Z)	Zone
Control Sta. Name				

City, Village or Town Little Falls
County of Monroe
Wisconsin