

CERTIFICATE

CERTIFIED LAND CORNER

No. 79

**21804232000**

I, Roger W. Brand, do hereby certify that on the 2nd day of July 1996, I found (evidence) (~~no evidence~~) of the East Quarter corner of Section 23, T 18 N, R 4W Fourth Principal Meridian, and I re-established said corner according to the Wisconsin Statutes as shown and described hereon.

Dated this 2nd day of July 1996.

Roger W. Brand  
Registered Land Surveyor No. S-1981  
Title

**History of corner establishment since Original Government Survey**  
Original PLSS in 1846 Set Post and 2 B.T.s Blk Oak 12" N 58½°W 47 lks  
Blk Oak 14" N 42¼°E 50 lks

No other record of re-established corner.  
Plat book shows land divisions at 1/16th corners North and South

Description of corner evidence found:

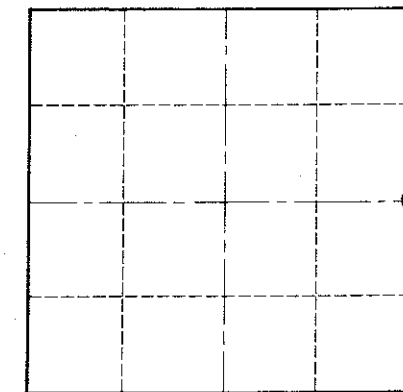
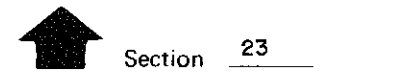
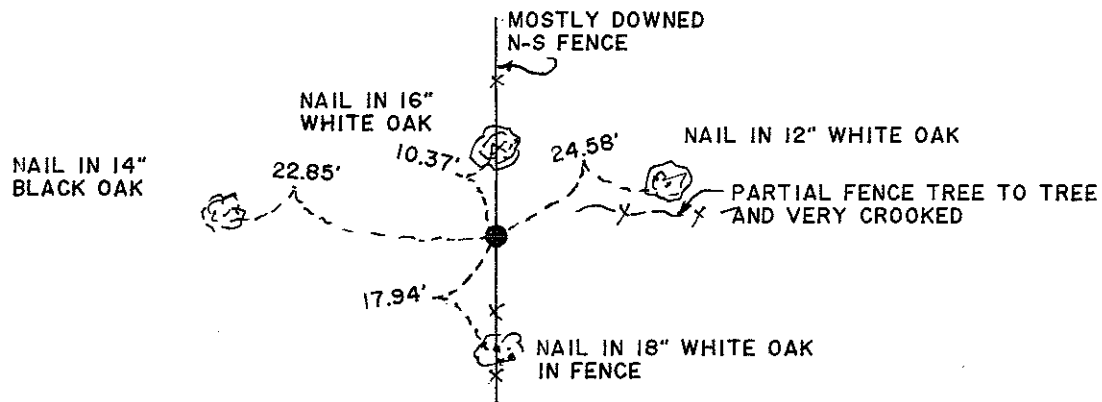
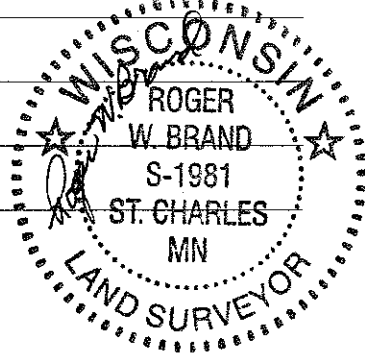
Accepted old North-South fence (partial downed) and position of 1/16th fence running east at the East 1/16th of the S.E. ¼ Section 23 and doubled the measured distance from the S.E. corner of Section 23 (a Fd Monu.) over this 1/16th fence as best evidence of original cor. That same line would fall about 6 feet east of placed Quarter corner monument.

Description of corner and witness monuments, references and accessories used to perpetuate the original or re-established location of this corner:

Witnesses to corner location:

Roger W. Brand

Scott J. McKee



O = LOCATION CORNER

T 18 N R 4 W

WISCONSIN

NOTE: SET TCP MONUMENT 30" LONG UNDER N-S FENCE WITH TOP UP 6". SET POST WITH SIGN 1' EAST

SURVEY CONTROL ORDER

Horizontal	_____
Vertical	_____

WISCONSIN COORDINATE SYSTEM

Corner	East (X)	North (Y)	Elevation (Z)	Zone
Control Sta. Name				

City, Village or Town SPARTA  
County of MONROE

COUNTY SURVEYOR FORM NO. 1