

21804242000

U.S. PUBLIC LAND SURVEY MONUMENT RECORD

I, Eric A. Roeser, do hereby certify that on the 28th day of November of 2012, I re-established the East 1/4 Corner of Section 24, Township 18 North, Range 4 West, Fourth Principal Meridian, as described hereon; and set a new monument and accessories as described hereon to perpetuate the location of this corner; and that this U.S. Public Land Survey Monument Record is correct to the best of my knowledge and belief.

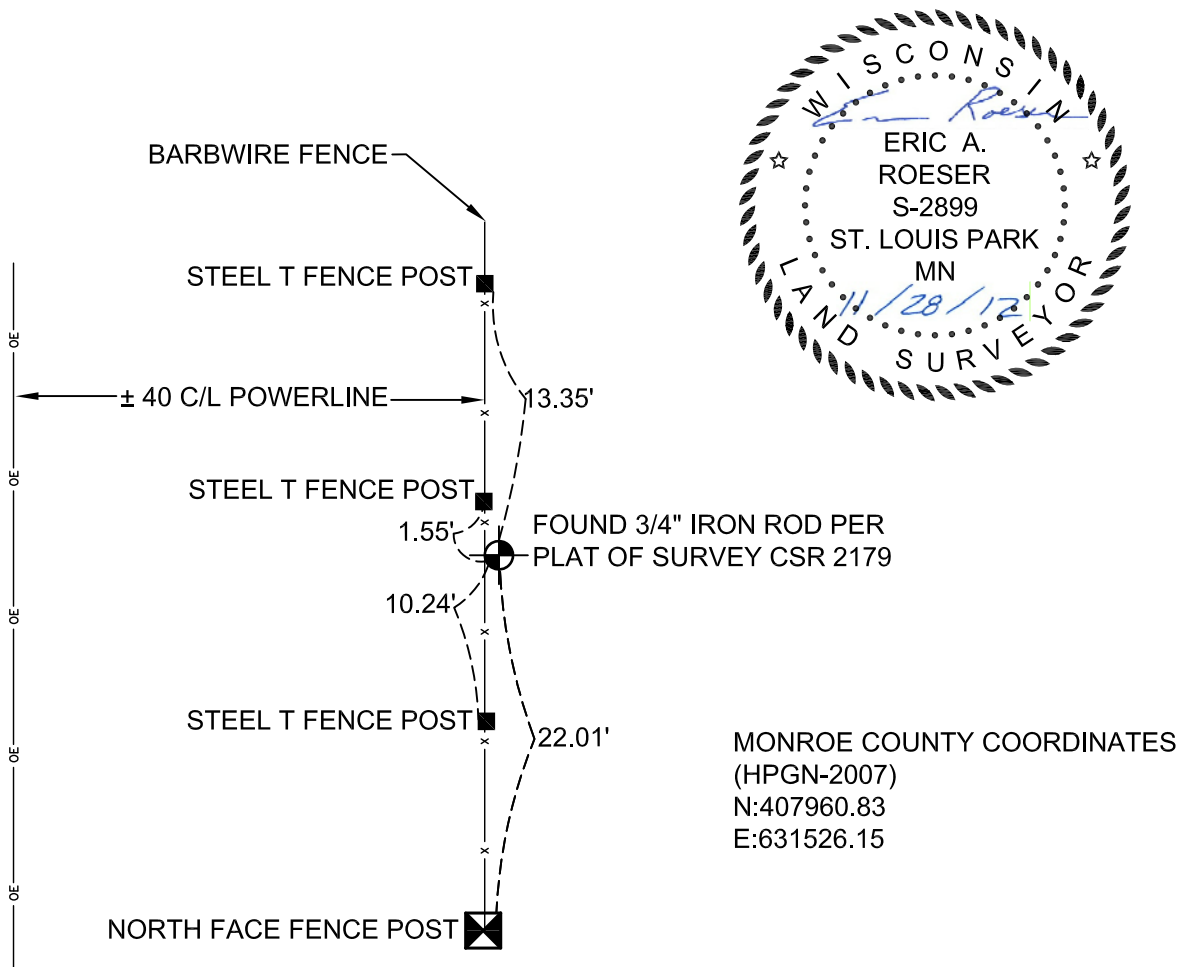
Description of original monument and accessories subsequent to restorations:

1845: Original Corner (post) established by J.E. Whitcher and J.E. Freeman with the following accessories:
22-inch Red Oak at S60°W, 41 lks. 18-inch Red Oak at N65°W, 36 lks.

2001: Christian J. Running (S-2558) set a 3/4-inch iron rod to perpetuate the corner location. No certificate exists for this corner, but it is documented on on Plat of Survey number CSR 2179

Evidence found and justification for locating corner as shown:

Ulteig Engineers recovered and accepted 3/4-iron rod from Running's survey (CSR 2179). I referenced the corner as shown below.



T18N R4W

	Section	24	

Dated at St. Paul, Minnesota, this 28th day of November, 2012

Signature Eric Roeser

WI Registration No. 2899-8

Office of County Surveyor in Monroe County
I hereby certify that the within instrument was filed in this office for record on the ____ day of _____, 2012

Signature _____
Title: Monroe County Surveyor

Index No. T18N R4W 80