

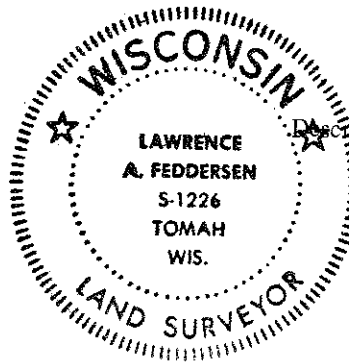
21804240020

I, Lawrence A. Feddersen, do hereby certify that on the 31st day of August 19 78, I found (evidence) ~~(XXXXXXXXXX)~~ of the N $\frac{1}{4}$ corner of Section 25, T 18 N, R 4 W, Fourth Principal Meridian, and I re-established said corner according to the Wisconsin Statutes as shown and described hereon.

Dated this 13 day of Sept. 19 78.

Lawrence A. Feddersen

REGISTERED LAND SURVEYOR S-1226
Title



History of original corner establishment:

No subsequent history of corner perpetuation since the original U.S. Government Survey.

Description of corner evidence found:

This corner was re-established at the intersection of a four-way fence, at which there was a large Red oak with fence wire through the middle of it North-South and East-West. The East-West fence was old and in good condition; the South fence was fairly new and the North fence was lying in humus soil with no posts clearly evident. This intersection was considered the best possible evidence as to the proper re-establishment of the corner and, therefore, used as the corner.

COUNTY SURVEYOR FORM NO. 1

Description of corner and witness monuments, references and accessories used to perpetuate the original or re-established location of this corner:

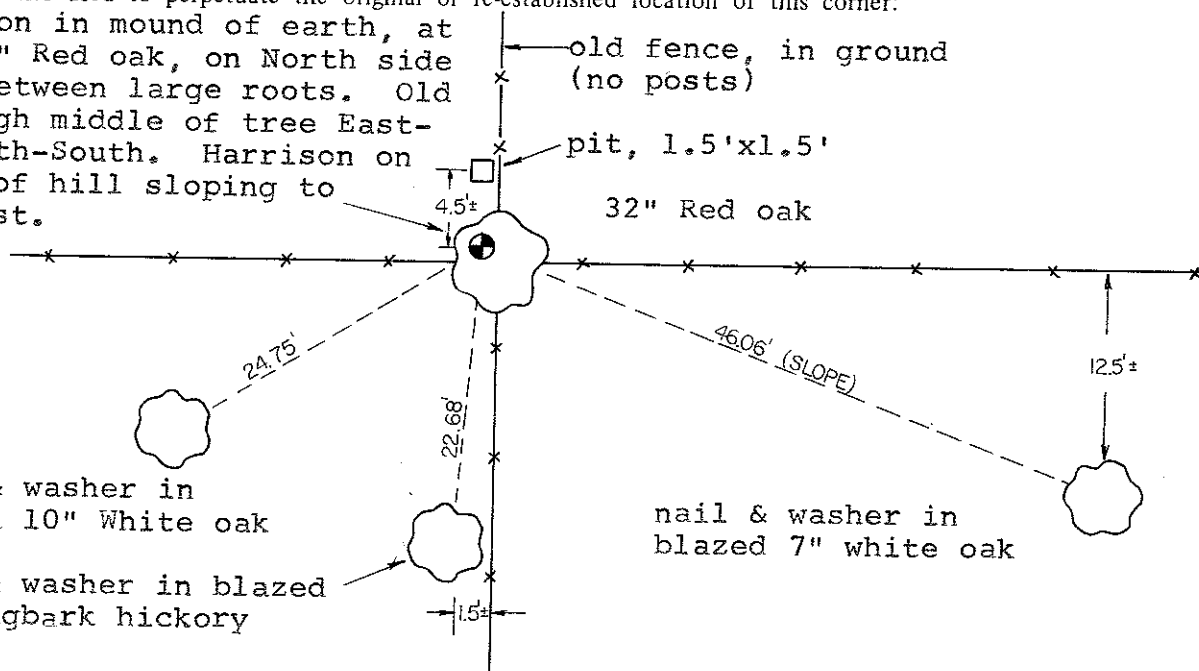
Set Harrison in mound of earth, at base of 32" Red oak, on North side of tree, between large roots. Old wire through middle of tree East-West & North-South. Harrison on East side of hill sloping to North & East.

Witnesses to corner location:

Lawrence A. Feddersen

Douglas J. Malliet

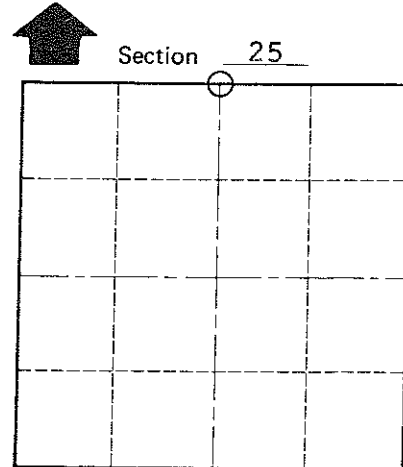
Steve Towne



nail & washer in blazed 10" White oak

nail & washer in blazed 5" Shagbark hickory

nail & washer in blazed 7" white oak



O = LOCATION CORNER

T 18 N R 4 W

WISCONSIN

SURVEY CONTROL ORDER

Horizontal	_____
Vertical	_____

WISCONSIN COORDINATE SYSTEM

Corner	East (X)	North (Y)	Elevation (Z)	Zone
Control Sta. Name				

~~XXXXXXXXXX~~ Town of SPARTA

County of MONROE