

21804240000

I, Mark R. Heidecke, do hereby certify that on the 15th day of August 1979, I found (evidence) ~~XXXXXX~~ of the NE Section corner of Section 25, T18 N, R 4 W Fourth Principal Meridian, and I re-established said corner according to the Wisconsin Statutes as shown and described hereon.

Dated this 21st day of August 1979.

Mark R. Heidecke

Registered Land Surveyor
Title

History of corner establishment since Original Government Survey

No subsequent history of monument perpetuation since the Original U. S. Government Survey.

Description of corner evidence found:

A Harrison monument was set to replace an old 3/4 inch iron pipe found at this location. The corner is in line of a fence to the West and a fence to the North and fits the occupation within the interior of Sec. 25.

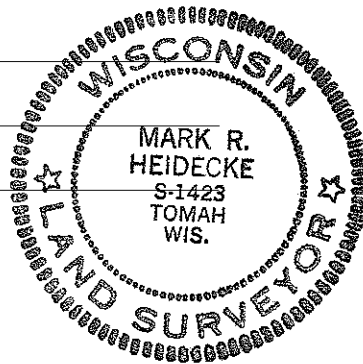
Description of corner and witness monuments, references and accessories used to perpetuate the original or re-established location of this corner:

Witnesses to corner location:

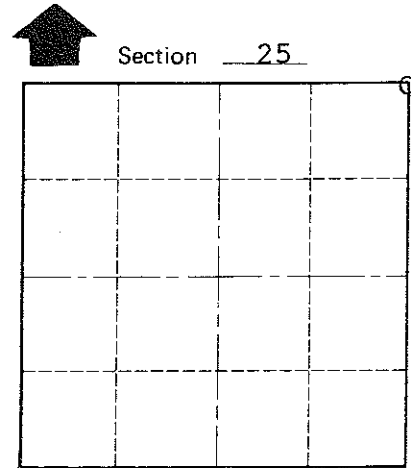
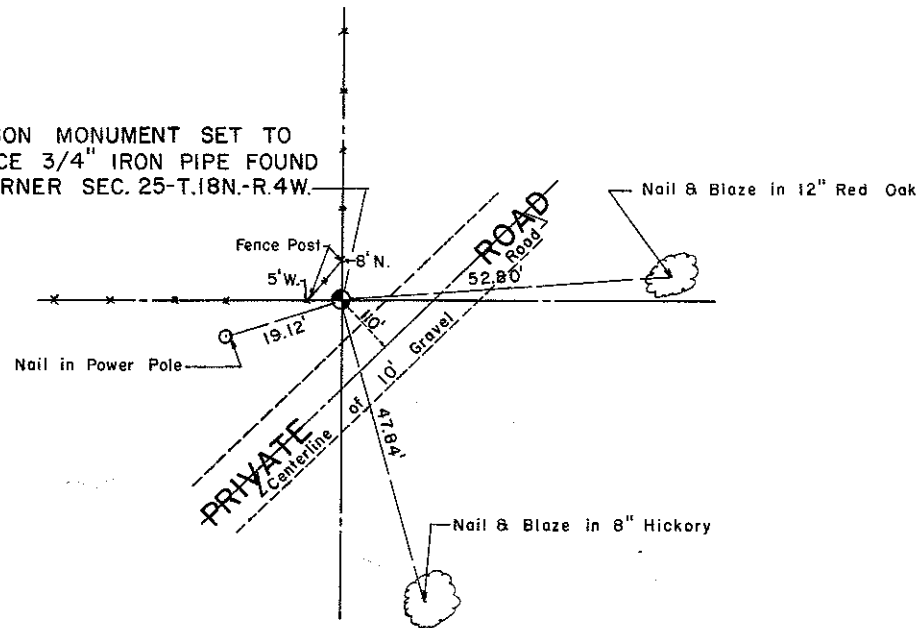
Mark R. Heidecke

Lawrence A. Feddersen

JerrybGray



HARRISON MONUMENT SET TO REPLACE 3/4" IRON PIPE FOUND NE CORNER SEC. 25-T.18N-R.4W.



O = LOCATION CORNER

T 18 N R 4 W.

WISCONSIN

COUNTY SURVEYOR FORM NO. 1

SURVEY CONTROL ORDER

Horizontal	_____
Vertical	_____

WISCONSIN COORDINATE SYSTEM

Corner	East (X)	North (Y)	Elevation (Z)	Zone
Control Sta. Name				

~~City of~~ Town. of Sparta

County of Monroe