

21804252000

# U.S. PUBLIC LAND SURVEY MONUMENT RECORD

I, Eric A. Roeser, do hereby certify that on the 28th day of November of 2012, I re-established the East 1/4 Corner of Section 25, Township 18 North, Range 4 West, Fourth Principal Meridian, as described hereon; and set a new monument and accessories as described hereon to perpetuate the location of this corner; and that this U.S. Public Land Survey Monument Record is correct to the best of my knowledge and belief.

### Description of original monument and accessories subsequent to restorations:

1845: Original Corner (post) established by J.E. Witcher and J.E. Freeman with the following accessories:

- 6-inch Oak at S65°W, 48 lks.
- 10-inch Oak at N18°E, 100 lks.

1979: See corner record 100. Mark Heidecke (S-1423) re-established this location proportionately between the Southeast and Northeast corners of Section 25 and set cast iron Harrison marker at this position. Mr. Heidecke notes that the corner falls approximately 33 east of an existing power line and fence line. The fence line is described as being located for convenience, and connects from pole to pole along said power line. The following accessories were referenced:

- Nail/Blaze in 8" Red Oak, 37.25 feet
- Nail/Blaze in 9" Red Oak, 15.89 feet
- Nail/Blaze in 7" Double Hickory, 21.10 feet
- Nail in Power Pole, 33.62 feet.

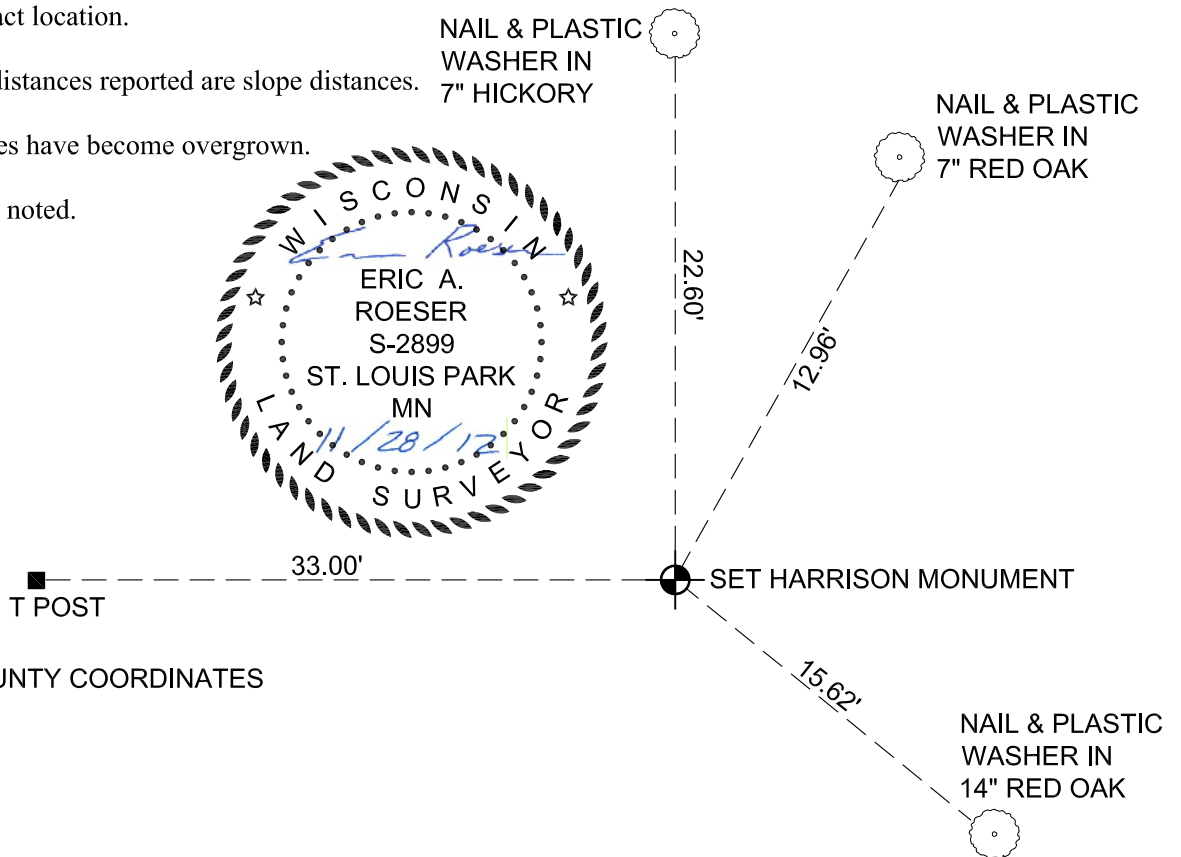
### Evidence found and justification for locating corner as shown:

I referenced this corner in the summer of 2012 for a cadastral survey for a nearby transmission line. During the course of construction, the previous monument was disturbed. I returned in November 2012 to replace the monument in it's exact location.

Please note that all distances reported are slope distances.

All of the original ties have become overgrown.

New ties were set as noted.



MONROE COUNTY COORDINATES  
(HPGN-2007)  
N: 402705.04  
E: 631528.10

### T18N R4W

	<b>Section</b>	<b>25</b>	

Dated at St. Paul, Minnesota, this 28th day of November, 2012

Signature Eric Roeser

WI Registration No. 2899-8

Office of County Surveyor in Monroe County  
I hereby certify that the within instrument was filed in this office for record on the \_\_\_\_ day of \_\_\_\_\_, 2012

Signature \_\_\_\_\_  
Title: Monroe County Surveyor

21804252000

I, Mark R. Heidecke, do hereby certify that on the 15th day of August 19 79, I found ~~(no evidence)~~ (no evidence) of the East 1/4 corner of Section 25, T 18 N, R 4 W. Fourth Principal Meridian, and I re-established said corner according to the Wisconsin Statutes as shown and described hereon.

Dated this 21st day of August 19 79.

*Mark R. Heidecke*

Registered Land Surveyor  
Title

History of corner establishment since Original Government Survey

No subsequent history of monument perpetuation since the Original U. S. Government Survey.

Description of corner evidence found:

A Harrison monument was set half-way on a straight line between the NE Corner and the SE Corner of Sec. 25. Although this location does not agree with a North and South fence which is 33.5 feet West, this location agrees with the overall bearing of the Range line for 2 miles. Furthermore, the fence is a recent one and was merely attached from power pole to power pole for convenience. This location is also compatible with the interior occupation of Section 25.

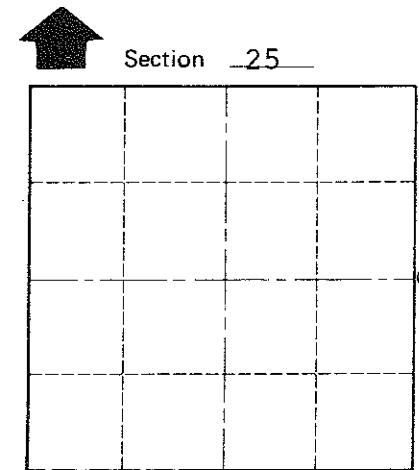
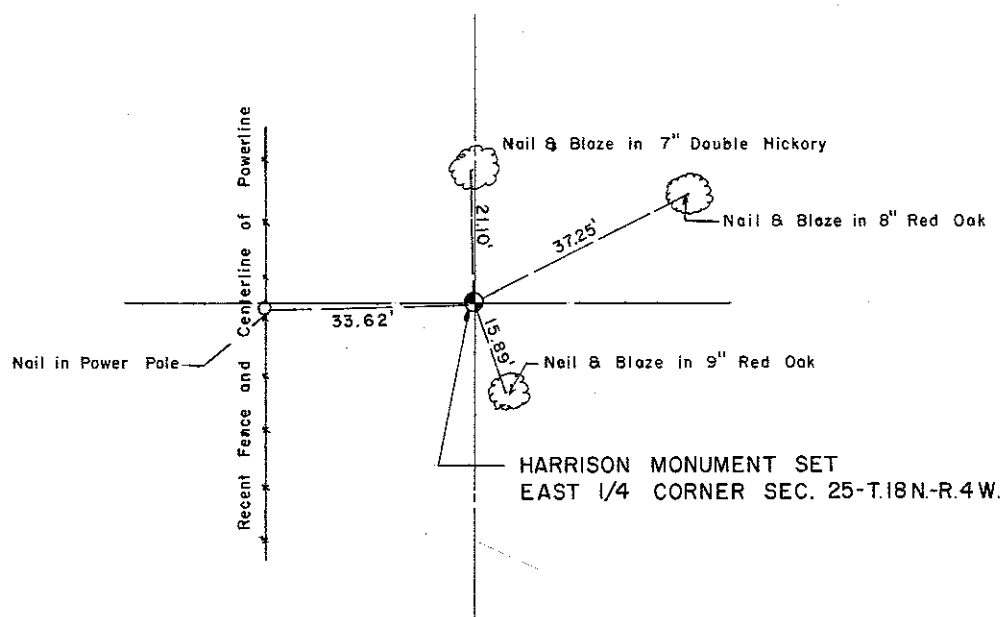
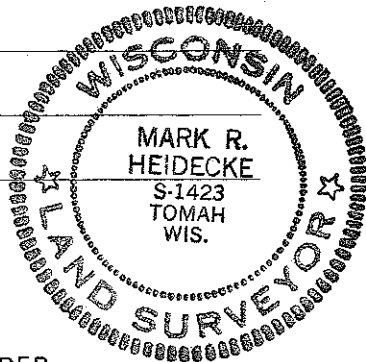
Description of corner and witness monuments, references and accessories used to perpetuate the original or re-established location of this corner:

Witnesses to corner location:

Mark R. Heidecke

Lawrence A. Feddersen

Jerry Gray



O = LOCATION CORNER

T 18 N R 4 W

WISCONSIN

COUNTY SURVEYOR FORM NO. 1

SURVEY CONTROL ORDER

Horizontal	_____
Vertical	_____

WISCONSIN COORDINATE SYSTEM

Corner	East (X)	North (Y)	Elevation (Z)	Zone
Control Sta. Name				

~~City of Sparta~~ Town of Sparta  
County of Monroe