

21804250020

I, Mark R. Heidecke, do hereby certify that on the 15th day of August 19 79, I found ~~(no evidence)~~ of the South 1/4 corner of Section 25, T 18 N, R 4 W Fourth Principal Meridian, and I re-established said corner according to the Wisconsin Statutes as shown and described hereon.

Dated this 21st day of August 19 79.

Mark R. Heidecke

Registered Land Surveyor

History of corner establishment since Original Government Survey

No subsequent history of monument perpetuation since the Original U. S. Government Survey.

Description of corner evidence found:

A Harrison Monument was set at the intersection of old fences to the North, South and West. This location is compatible with nearby Section and Quarter Section corners as well as the interior occupation of Sections 25 and 36.

COUNTY SURVEYOR FORM NO. 1

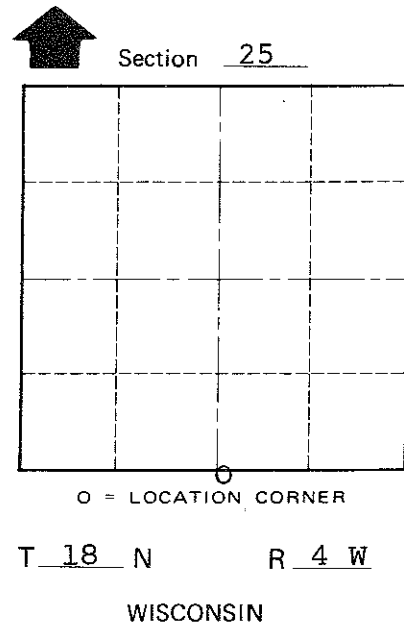
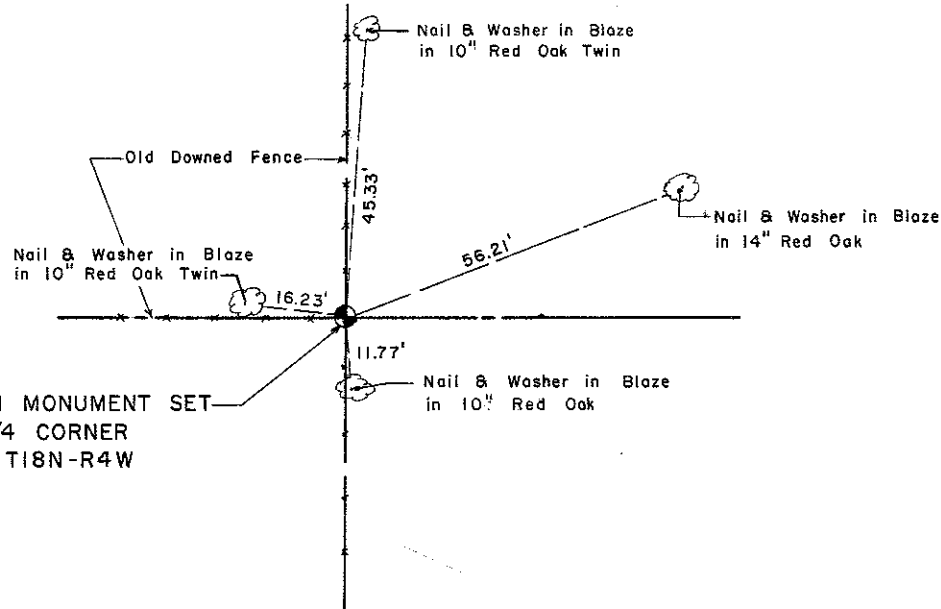
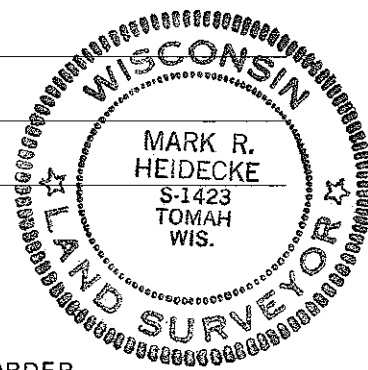
Description of corner and witness monuments, references and accessories used to perpetuate the original or re-established location of this corner:

Witnesses to corner location:

Mark R. Heidecke

Lawrence A. Feddersen

Jerry Gray



SURVEY CONTROL ORDER

Horizontal	_____
Vertical	_____

WISCONSIN COORDINATE SYSTEM

Corner	East (X)	North (Y)	Elevation (Z)	Zone
Control Sta. Name				

~~(no evidence)~~ Town of Sparta  
County of Monroe