

21804250000

I, Mark R. Heidecke, do hereby certify that on the 15th day of August 1979, I found ~~evidence~~ (no evidence) of the SE Corner corner of Section 25, T18 N, R 4 W Fourth Principal Meridian, and I re-established said corner according to the Wisconsin Statutes as shown and described hereon.

Dated this 21st day of August 1979.

Mark R. Heidecke

Registered Land Surveyor
Title

History of corner establishment since Original Government Survey

No subsequent history of monument perpetuation since the Original U. S. Government Survey.

Description of corner evidence found:

A Harrison monument was set at a proportional distance from, and on a straight line between the NE Corner of Section 25 and the East 1/4 Corner of Section 36.

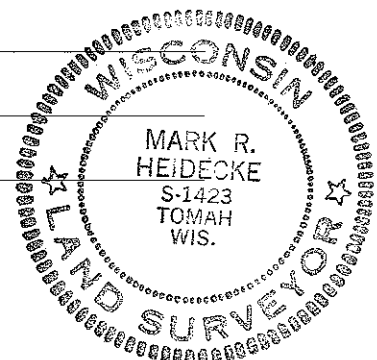
Description of corner and witness monuments, references and accessories used to perpetuate the original or re-established location of this corner:

Witnesses to corner location:

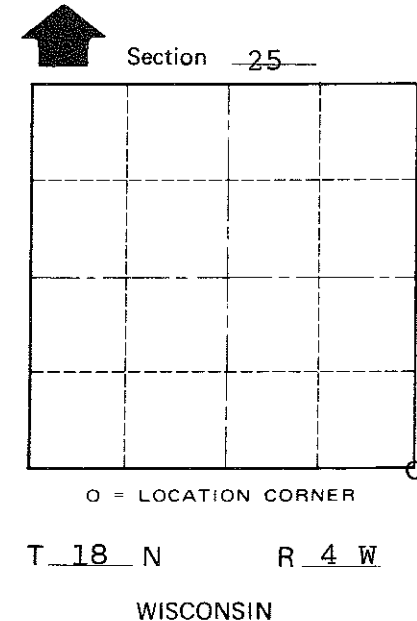
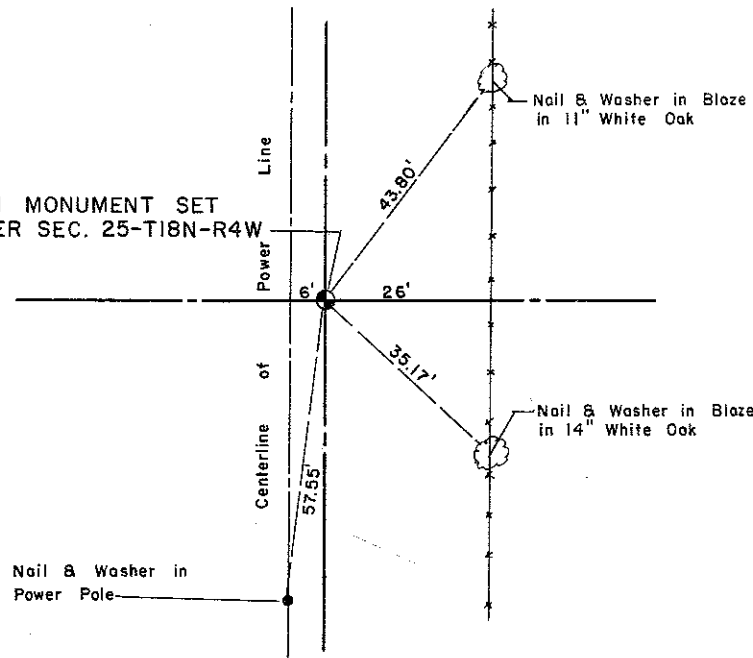
Mark R. Heidecke

Lawrence A. Feddersen

Jerry Gray



HARRISON MONUMENT SET
SE CORNER SEC. 25-T18N-R4W



COUNTY SURVEYOR FORM NO. 1

SURVEY CONTROL ORDER

| | |
|------------|-------|
| Horizontal | _____ |
| Vertical | _____ |

WISCONSIN COORDINATE SYSTEM

| Corner | East (X) | North (Y) | Elevation (Z) | Zone |
|-------------------|----------|-----------|---------------|------|
| Control Sta. Name | | | | |

~~City of Monroe~~ Town of Sparta
County of Monroe