

99

**U.S. PUBLIC LAND CORNER
MAINTENANCE**

**Corner ID : E1/4 Sec. 26, T18N-R4W
21804262000**

<u>DATE</u>	<u>CREW</u>	<u>MONUMENT TYPE -----</u>
May 3, 2016	Zachariah P.Dechant Gary L. Dechant	Found WI Dept. of Transportation Cap. Only remaining tie is a nail in power pole to the SW that measured 37.00 feet vs. recorded measurement of 36.43'. Pole is leaning. DOT Cap is 193' east of centerline STH "27". Falls in centerline of Festival Ave.

References:

	<u>Bearing</u>	<u>Distance</u>
1) Set 3/4"x24" round iron bar, flush in lawn on line with east end of house	N21E	47.28'
2) Set 3/4"x24" round iron bar, down 6" in wetlands	S46E	52.21'
3) Set 3/4"x24" round iron bar, down 6", in wetlands	S21W	42.35'
4) Set 3/4"x24" round iron bar, flush in lawn on line with west end of house	N46W	66.15'

WI DOT Cap & reference markers set on straight lines.



I, Mark R. Heidecke, do hereby certify that on the 15th day of August 19 79, I found (evidence) (~~XXXXXX~~) of the West 1/4 corner of Section 25, T 18 N, R 4 W Fourth Principal Meridian, and I re-established said corner according to the Wisconsin Statutes as shown and described hereon.

Dated this 21st day of August 1979.

Mark R. Heidecke
 Registered Land Surveyor
Title

History of corner establishment since Original Government Survey

No subsequent history of monument perpetuation since the Original U. S. Government Survey.

Description of corner evidence found:

A Harrison monument was set to replace an old 1/2 inch iron pipe found at this location. The corner is in the centerline of a 16 foot gravel road (Buckley Dr.), and its location is very compatible with the locations of the NW and SW Section corners, as well as the interior occupation of Section 25.

**See Reverse Side
For Maintenance**

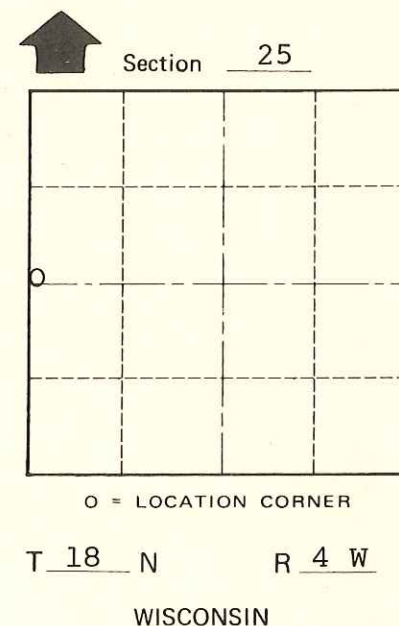
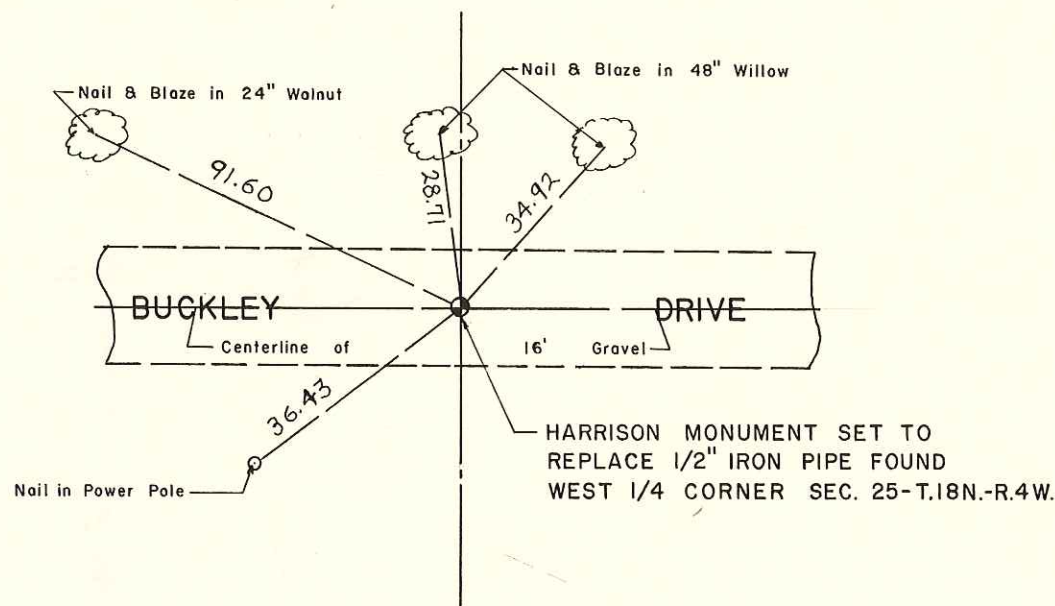
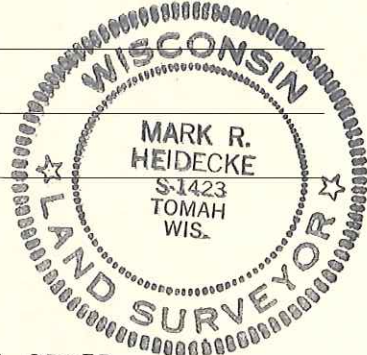
Description of corner and witness monuments, references and accessories used to perpetuate the original or re-established location of this corner:

Witnesses to corner location:

Mark R. Heidecke

Lawrence A. Feddersen

Jerry Gray



SURVEY CONTROL ORDER

Horizontal	_____
Vertical	_____

WISCONSIN COORDINATE SYSTEM

Corner	East (X)	North (Y)	Elevation (Z)	Zone
Control Sta. Name				

~~City, Village or~~ Town of Sparta
 County of Monroe

COUNTY SURVEYOR FORM NO. 1