

CERTIFICATE

CERTIFIED LAND CORNER

No. 103

21804260000

I, Mark R. Heidecke, do hereby certify that on the 15th day of August 19 79, I found ~~XXXXXX~~ (no evidence) of the SW Section corner of Section 25, T 18 N, R 4 W Fourth Principal Meridian, and I re-established said corner according to the Wisconsin Statutes as shown and described hereon.

Dated this 21st day of August 19 79.

Mark R. Heidecke

Registered Land Surveyor

Title

History of corner establishment since Original Government Survey

No subsequent history of monument perpetuation since the Original U. S. Government Survey.

Description of corner evidence found:

A Harrison monument was set at the intersection of a fence to the West and a fence to the South. This location is compatible with nearby Section and Quarter Section corners, as well as the interior occupation of Sections 25 and 36.

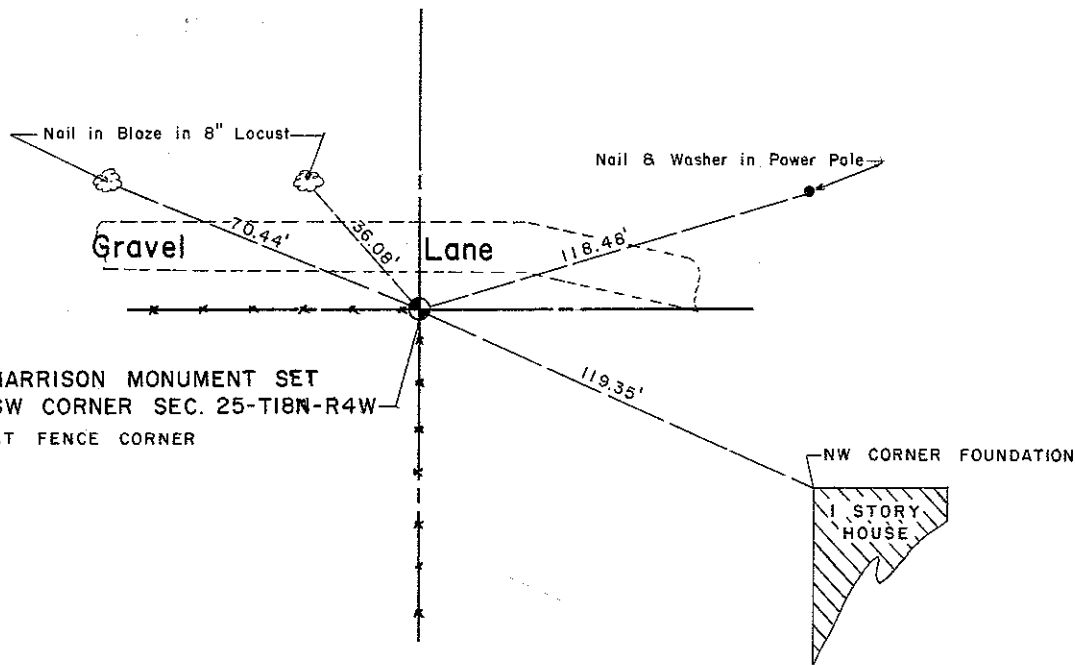
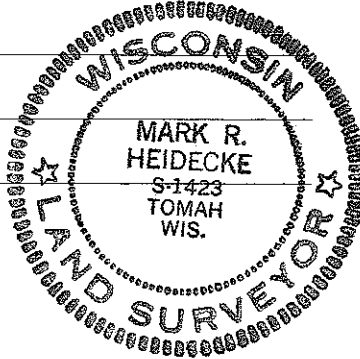
Description of corner and witness monuments, references and accessories used to perpetuate the original or re-established location of this corner:

Witnesses to corner location:

Mark R. Heidecke

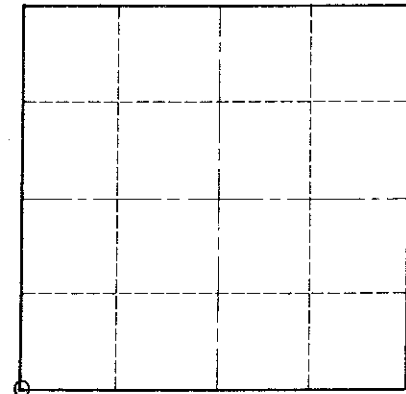
Lawrence A. Feddersen

Jerry Gray



HARRISON MONUMENT SET SW CORNER SEC. 25-T18N-R4W AT FENCE CORNER

Section 25



O = LOCATION CORNER

T 18 N R 4 W

WISCONSIN

COUNTY SURVEYOR FORM NO. 1

SURVEY CONTROL ORDER

Horizontal	_____
Vertical	_____

WISCONSIN COORDINATE SYSTEM

Corner	East (X)	North (Y)	Elevation (Z)	Zone
Control Sta. Name				

City, Village, or Town of Sparta
County of Monroe