

21804272000

I, William C. Jung, do hereby certify that on the first day of September 1981, I found (evidence) ~~(no evidence)~~ of the West 1/4 corner of Section 26, T 18 N, R 4 W, Fourth Principal Meridian, and I re-established said corner according to the Wisconsin Statutes as shown and described hereon.

Dated this 2nd day of Sept. 1981.

William C. Jung
Registered Land Surveyor 1323
Title

History of original corner establishment:

None recorded since the original government survey.

Description of corner evidence found:

I found what I believe to be the remains of the original government bearing tree and set a Harrison monument at the appropriate location.

Approved: HARLEY A. SIME
MONROE CO. SURVEYOR

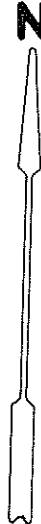
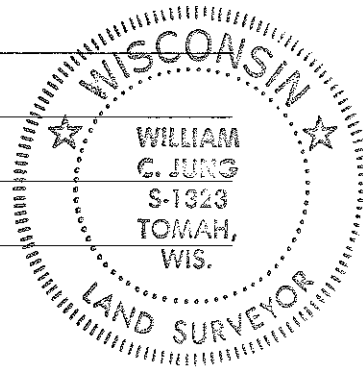
COUNTY SURVEYOR FORM NO. 1

Description of corner and witness monuments, references and accessories used to perpetuate the original or re-established location of this corner:

Witnesses to corner location:

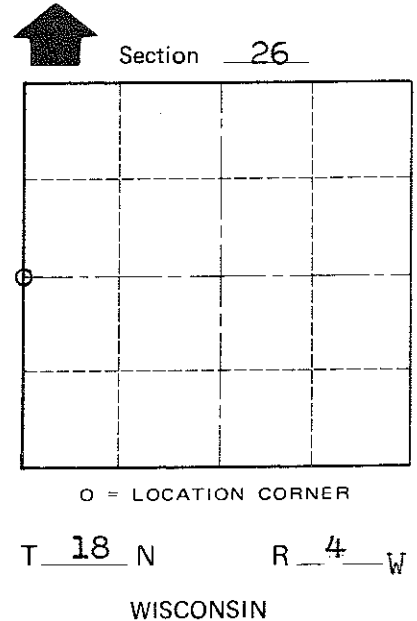
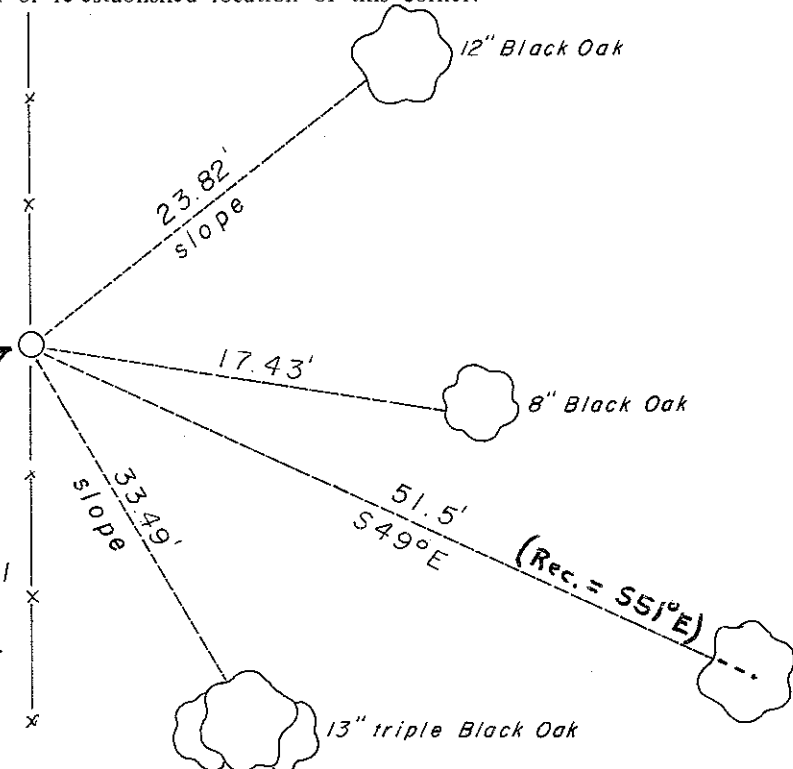
William C. Jung

Carlton R. Pietz



Set Harrison monument in mound of rock and sand. (in fence)

Note: Trees are double blazed with a nail and cap set in the lower blaze.



Dead, rotted Oak with scar on Northwest side. ORG. B.T.

SURVEY CONTROL ORDER	
Horizontal	_____
Vertical	_____

WISCONSIN COORDINATE SYSTEM				
Corner	East (X)	North (Y)	Elevation (Z)	Zone
Control Sta. Name				

~~City of Sparta~~ Town of Sparta
County of Monroe