

21804270000

I, William C. Jung, do hereby certify that on the 7th day of January 1976, I found (evidence) (no evidence) of the NW corner of Section 35, T18 N, R 4 W Fourth Principal Meridian, and I re-established said corner according to the Wisconsin Statutes as shown and described hereon.

Dated this 6th day of Dec. 1977.

William C. Jung, R.L.S. 1323

Crew Chief, County Surveyor's Title Office

History of original corner establishment:

No known history recorded since the original government survey.

Description of corner evidence found:

Accepted occupied corner as best available evidence. Fits section corner to the South for bearing and distance. Too hard to dig for setting Harrison, so an iron bar was set. Replaced iron bar with a Harrison Monument by Jung and Dechant on the 4th day of June 1976.

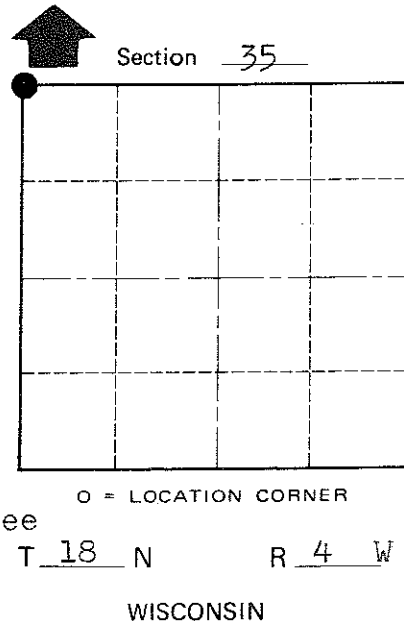
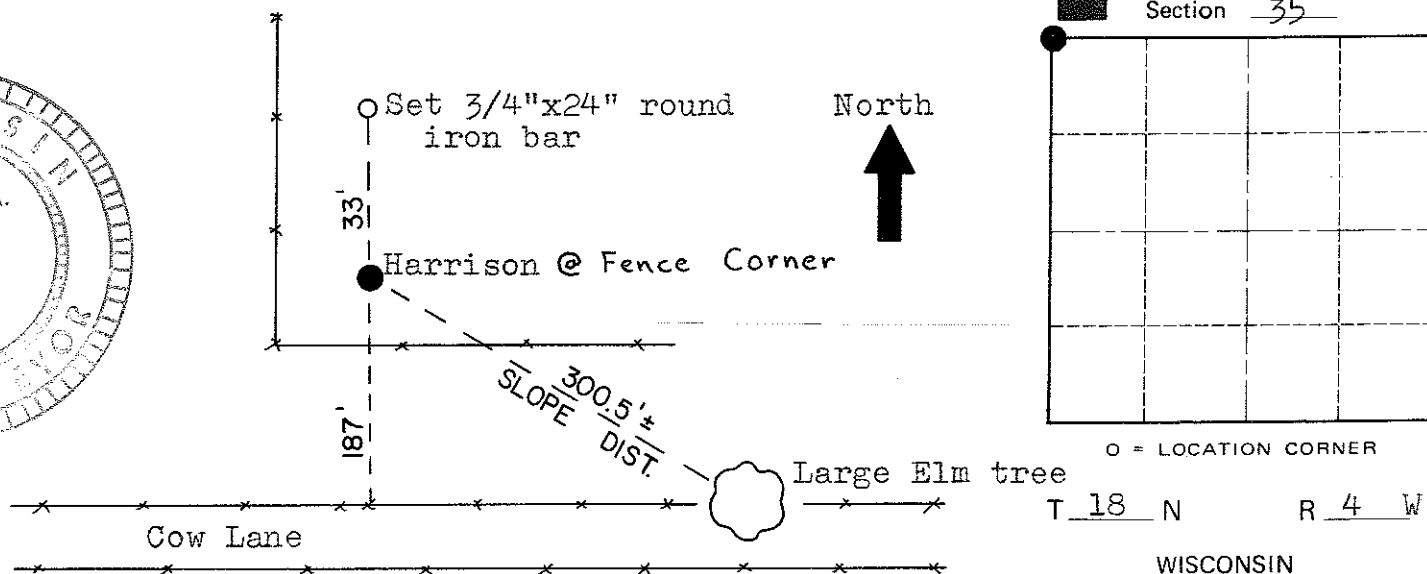
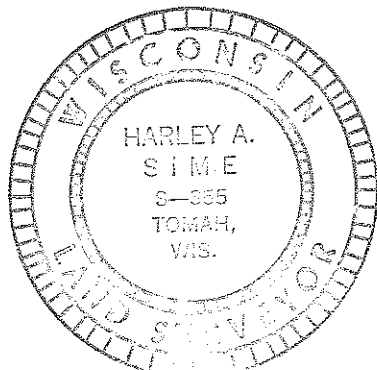
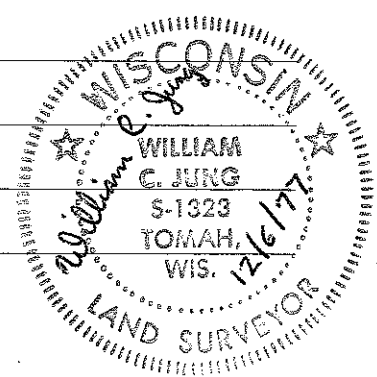
COUNTY SURVEYOR FORM NO. 1

Description of corner and witness monuments, references and accessories used to perpetuate the original or re-established location of this corner:

Set iron bar on 1/7/76 and replaced bar with Harrison on 6/4/76

Witnesses to corner location:

W. Jung
G. Sime
G. Dechant



SURVEY CONTROL ORDER

Table with 2 rows: Horizontal, Vertical

WISCONSIN COORDINATE SYSTEM

Table with 5 columns: Corner, East (X), North (Y), Elevation (Z), Zone

City, Village or Town Sparta
County of Monroe