

21804280000

I, Mark R. Heidecke, do hereby certify that on the 31st day of October 19 79, I found ~~(evidence)~~ (no evidence) of the Southeast corner of Section 28, T 18 N, R 4 W Fourth Principal Meridian, and I re-established said corner according to the Wisconsin Statutes as shown and described hereon.

Dated this 21st day of December 19 79.

Mark R. Heidecke

Registered Land Surveyor
Title

History of corner establishment since Original Government Survey

There is no subsequent history of monument perpetuation since the Original U.S. Government Survey in Monroe County.

Description of corner evidence found:

A Harrison Monument was set at the intersection of fencelines to the West and South. This location agrees favorably with monuments found at the NE Corner and the East 1/4 Corner of Section 28.

COUNTY SURVEYOR FORM NO. 1

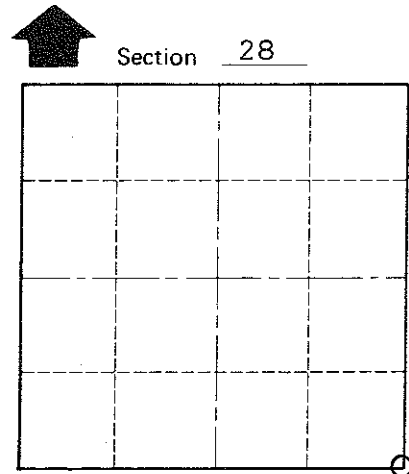
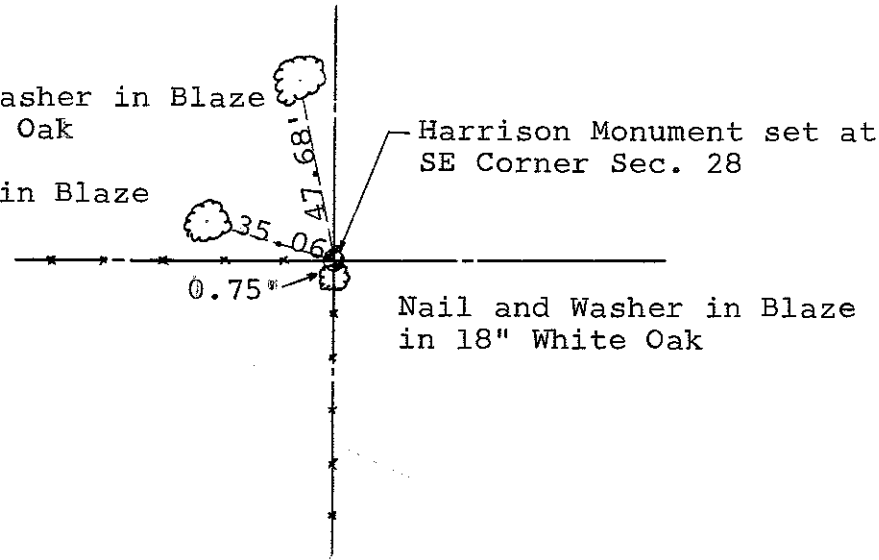
Description of corner and witness monuments, references and accessories used to perpetuate the original or re-established location of this corner:

Witnesses to corner location:

Mark Heidecke

Lawrence Feddersen

Nail and Washer in Blaze in 20" Red Oak
Nail and Washer in Blaze in 13" Hickory



O = LOCATION CORNER

T 18 N R 4 W

WISCONSIN

SURVEY CONTROL ORDER

Horizontal
Vertical

WISCONSIN COORDINATE SYSTEM

Corner	East (X)	North (Y)	Elevation (Z)	Zone
Control Sta. Name				

~~XXXXXX~~ Town of Sparta

County of Monroe