

21804300020

I, Gary L. Dechant, do hereby certify that on the 24th day of February 1984, I found (no evidence) of the S 1/4 corner of Section 30, T 18 N, R 4 W Fourth Principal Meridian, and I re-established said corner according to the Wisconsin Statutes as shown and described hereon.

Dated this 29th day of Feb. 1984.

Gary L. Dechant

Registered Land Surveyor, S-1744 Title

History of corner establishment since Original Government Survey

Fred Holden in April of 1899, at that time Deputy County Surveyor under Hamilton La Rue who then was County Surveyor, states he set the C 1/4 corner of Section 30, T18N-R4W by intersection of quarter lines. He does not give any bearing trees or says if he set anything at this corner but had to have been here to set the C 1/4 corner by intersection of quarter lines.

Established this corner by single proportionate measurement as no evidence could be found of the corner. Fits forty fence to West within 4'±.

Description of corner and witness monuments, references and accessories used to perpetuate the original or re-established location of this corner:

Witnesses to corner location:

Lawrence A. Feddersen, S1226

Gary L. Dechant

COUNTY SURVEYOR FORM NO. 1

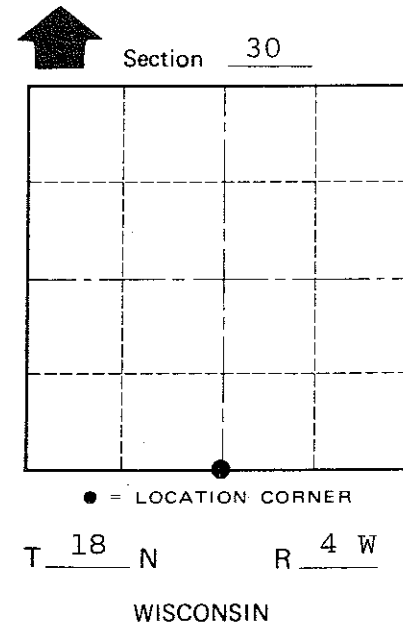
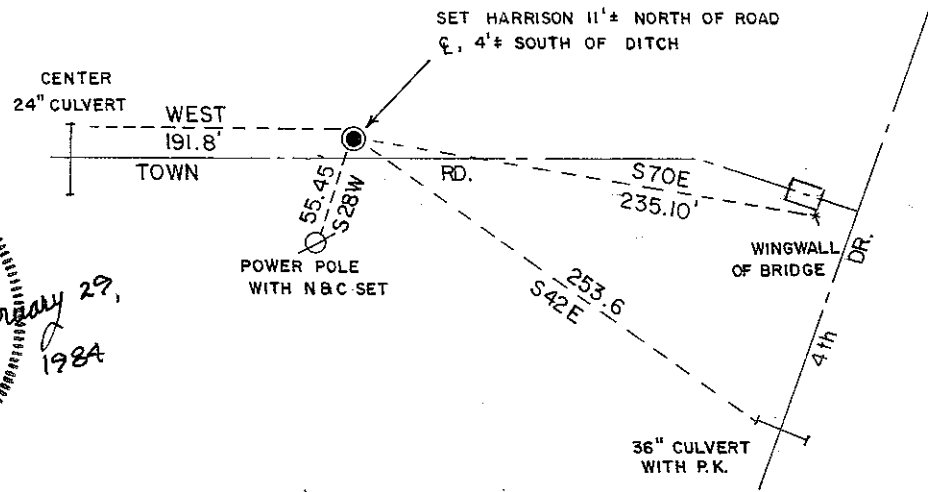
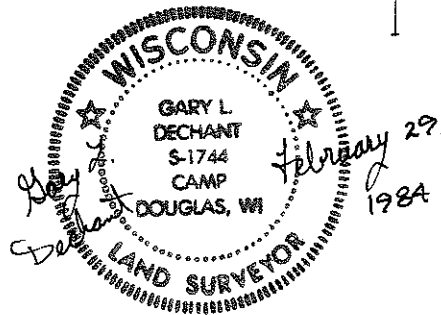
Approved: HARLEY A. SIME MONROE CO. SURVEYOR

SURVEY CONTROL ORDER

Table with 2 rows: Horizontal, Vertical

WISCONSIN COORDINATE SYSTEM

Table with 5 columns: Corner, East (X), North (Y), Elevation (Z), Zone



City/Village or Town Sparta County of Monroe