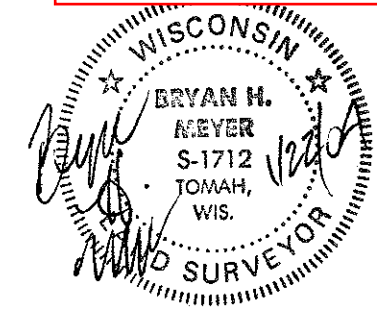


CERTIFICATE

CERTIFIED LAND CORNER

No. 115

21804312000



I, Bryan H. Meyer, do hereby certify that on the 1st day of November, 1999, I found (evidence) (~~no evidence~~) of the East 1/4 corner of Section 31, T 18 N, R 4 W Fourth Principal Meridian, and I re-established said corner according to the Wisconsin Statutes as shown and described hereon.

Dated this 22nd day of January, 2004.
Bryan H. Meyer
 Registered Land Surveyor
 Title

History of corner establishment since Original Government Survey

C. M. Keach was here in May of 1903 while surveying in Section 32.

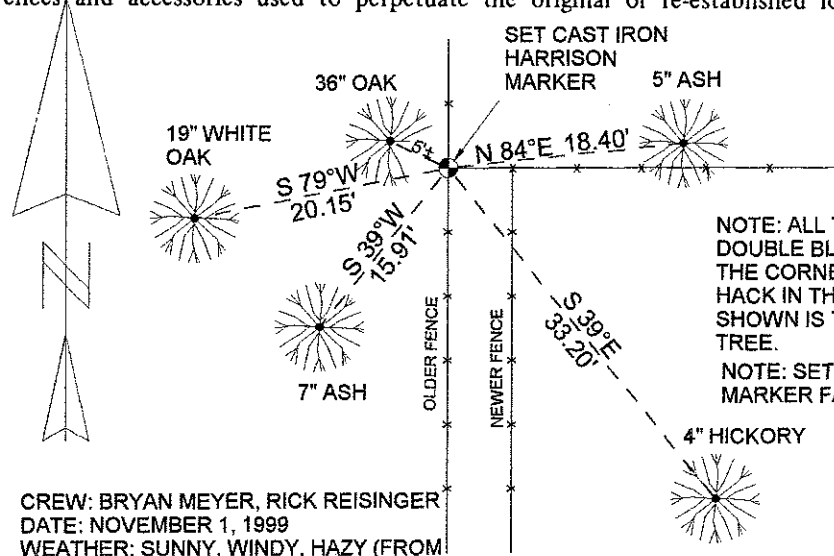
Description of corner evidence found:

I accepted the occupied fence corner as the best available evidence of the corner location.

COUNTY SURVEYOR FORM NO. 1

Description of corner and witness monuments, references, and accessories used to perpetuate the original or re-established location of this corner:

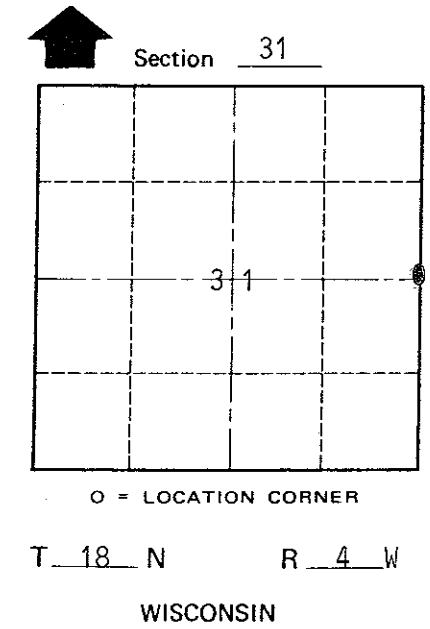
Witnesses to corner location:
Bryan H. Meyer
Richard Reisinger



NOTE: ALL TREES (EXCEPT THE 36" OAK) ARE DOUBLE BLAZED WITH THE BLAZES FACING THE CORNER. THERE IS ALSO A NAIL SET IN A HACK IN THE SIDE OF EACH TREE. EACH DISTANCE SHOWN IS TO THE NAIL IN THE HACK OF EACH TREE.
 NOTE: SET SIGN AND POST 0.75' SOUTH OF MARKER FACING NORTH.

CREW: BRYAN MEYER, RICK REISINGER
 DATE: NOVEMBER 1, 1999
 WEATHER: SUNNY, WINDY, HAZY (FROM WILDFIRES IN WYOMING) 50°±.

NOTE: The bearings shown hereon are magnetic hand compass bearings.



SURVEY CONTROL ORDER

Horizontal	_____
Vertical	_____

WISCONSIN COORDINATE SYSTEM

Corner	East (X)	North (Y)	Elevation (Z)	Zone
Control Sta. Name				

~~XXXXXX~~ Town of Sparta
 County of Monroe