

CERTIFICATE

I, Laurence E Johns III, do hereby certify that on the 11th day of May, 2012, I found (evidence) ~~(no evidence)~~ of the E 1/4 Corner of Section 32, T18N, R4W, Fourth Principle Meridian, and I re-established said corner according to the Wisconsin Statutes as shown and described hereon.

Dated this 28th day of August, 2012.

Laurence E Johns III
 Laurence E Johns III RLS 2804
 Eagle Ridge Surveying, LLC
 PO Box 213
 Wilton, WI 54670

CERTIFIED LAND CORNER

History of corner establishment since Original Government Survey

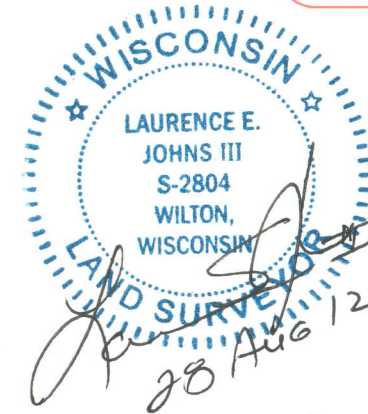
This corner established by John Dunn in December 1846. CM Keach was at this corner, in June 1903, and found an original bearing tree. Dwayne Hefner was at this corner, in October 2002. He established this corner at fence corner and set the center of section based on this corner.

Description of corner evidence found:

I could not find the corner as shown on Hefner survey. I re-established his corner by using the W 1/4 Corner and the Center of Section that Hefner had established. I extended the distance from the Center of Section and this fit the old fence corner real well. This corner is also within 6" of the mid-point between the NE & SE Corners. I set a Harrison monument at this location and accepted it as the best available evidence of the original government corner.

No. _____

21804322000



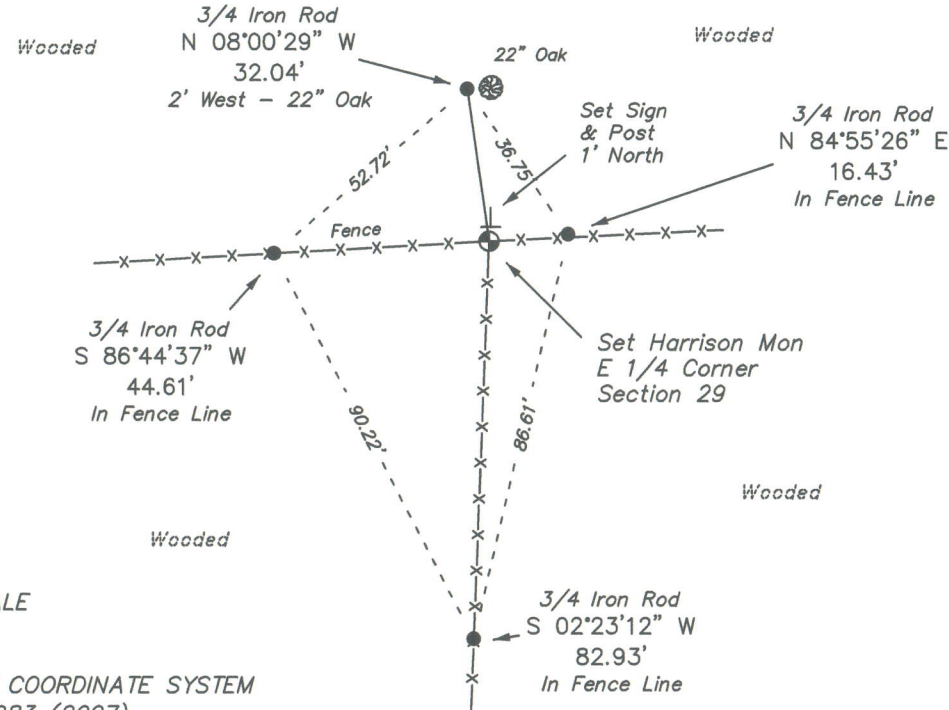
COUNTY SURVEYOR FORM NO. 1

Description of corner and witness monuments, references and accessories used to perpetuate the original or re-established location of this corner:

Witness to corner location:

 Laurence E Johns III

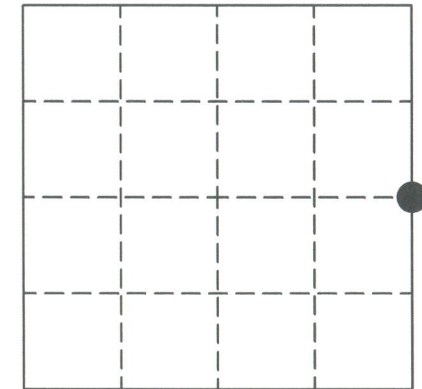
 Larry Handschy



NOT TO SCALE

MONROE COUNTY COORDINATE SYSTEM
 NAD 1983 (2007)

Section 32



● = LOCATION CORNER

T18N R4W
 WISCONSIN

See Section Info
 on Reverse

SURVEY CONTROL ORDER

Horizontal
Vertical

Corner	North (Y)	East (X)	Elevation (Z)	Zone
E 1/4 Corner	397554.877	610418.548		
Control Sta. Name				

~~City, Village or Town~~ Sparta

County of Monroe

