

21804332000

I, Gary L. Dechant, do hereby certify that on the 21st day of December 19 93, I found (evidence) (no evidence) of the W/4 corner of Section 34, T 18 N, R 4 W Fourth Principal Meridian, and I re-established said corner according to the Wisconsin Statutes as shown and described hereon.

Dated this 28th day of Dec. 19 93.

Gary L. Dechant

Reg. Land Surveyor, 1744

History of corner establishment since Original Government Survey

No known history since the original government survey.

Description of corner evidence found:

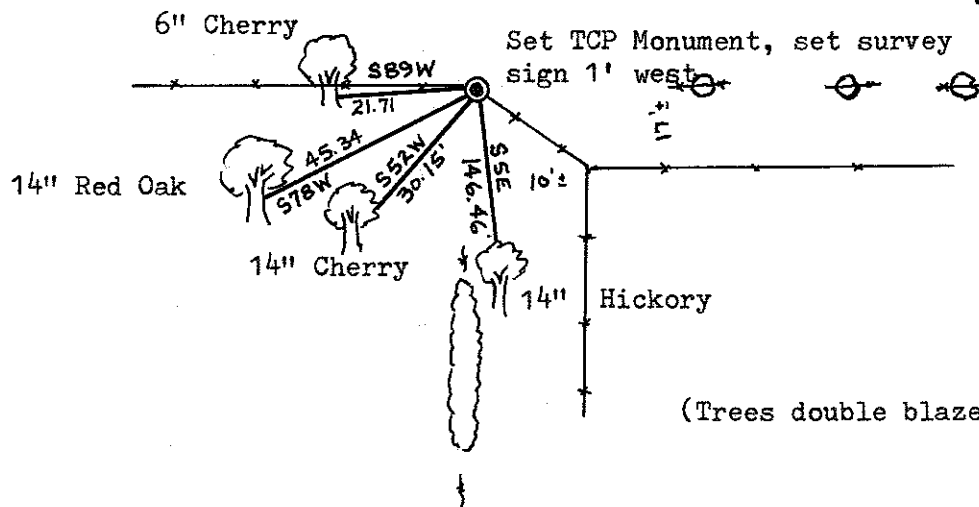
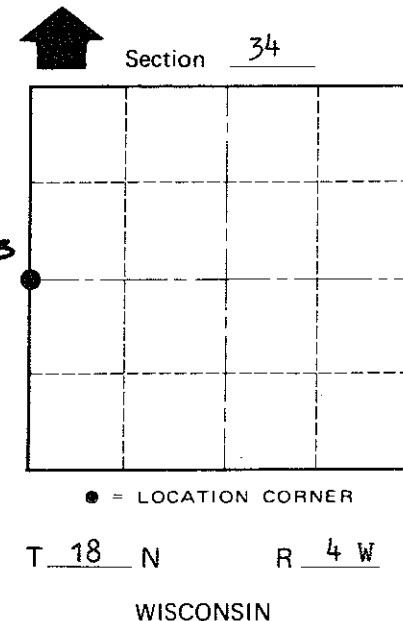
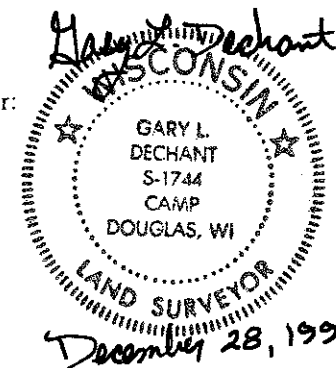
Accepted old fence corner intersection as best available evidence, fits between section corners extremely well.

Description of corner and witness monuments, references and accessories used to perpetuate the original or re-established location of this corner:

Witnesses to corner location:

David E. Madison

Gary L. Dechant



(Trees double blazed with 20d nail set)

COUNTY SURVEYOR FORM NO. 1

SURVEY CONTROL ORDER

Table with 2 rows: Horizontal, Vertical.

WISCONSIN COORDINATE SYSTEM

Table with 5 columns: Corner, East (X), North (Y), Elevation (Z), Zone.

City, Village or Town Sparta, County of Monroe