

CERTIFICATE

UPDATED  
CERTIFIED LAND CORNER

No. 6

**21804340020**

I, Harley A. Sime, do hereby certify that on the 14 day of January 1976, I found (evidence) (no evidence) of the N 1/4 corner of Section 3, T 17 N, R 4W, Fourth Principal Meridian, and I re-established said corner according to the Wisconsin Statutes as shown and described hereon.

History of original corner establishment:

William Jung was here in August of 1982 and used the pipe of record. Gary Dechant used this pipe in his October 1985 survey.

Description of corner evidence found:

Set on line and at a proportionate distance between the section corners.

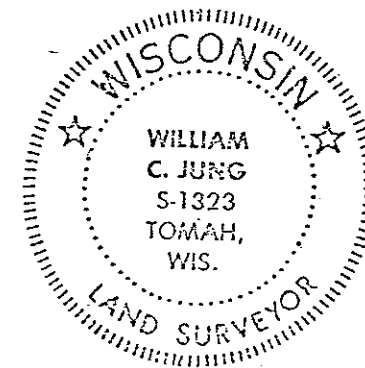
Dated this 15 day of Jan. 1976.

*Harley A. Sime*

County Surveyor

Title

On March 28, 1989, Bryan Meyer and Brian Forsythe got additional ties for the corner and removed the iron pipe due to road construction to be done along S.T.H. "27". On August 11, 1989, Bryan Meyer and John Kenworthy reset the iron pipe at it's previous location. Said additional ties are shown below.



COUNTY SURVEYOR FORM NO. 1

Description of corner and witness monuments, references and accessories used to perpetuate the original or re-established location of this corner:

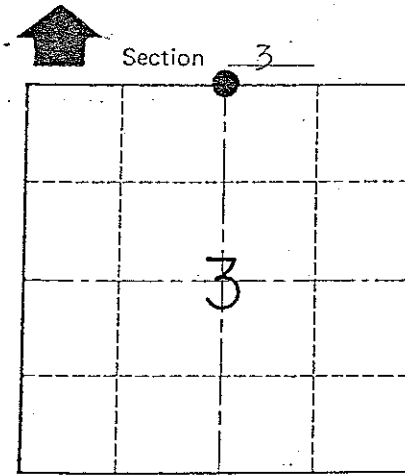
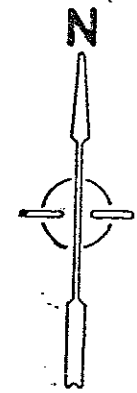
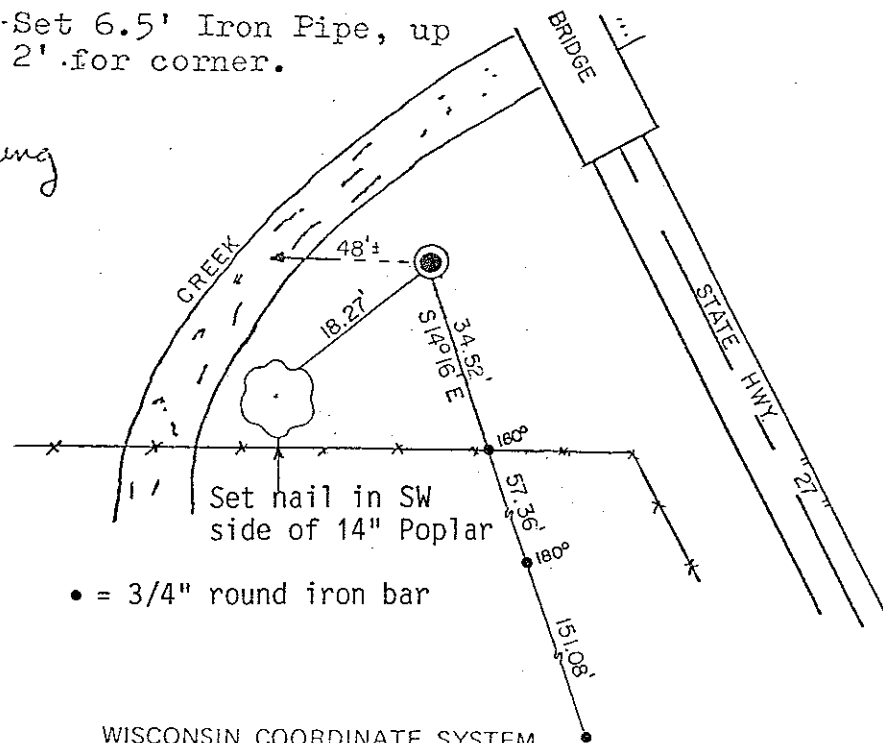
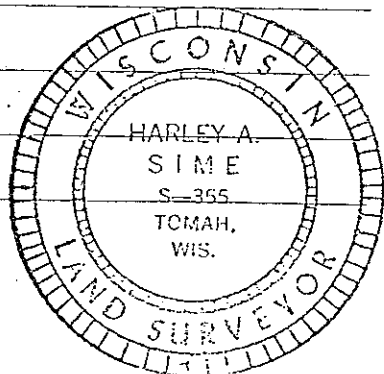
Re-Set 2 1/2" iron pipe.

Re-Set 6.5' Iron Pipe, up 2' for corner.

Witnesses to corner location:

W.C. Jung- Crew Chief *W.C. Jung*

C. Pietz



• = LOCATION CORNER

T 17 N R 4W

WISCONSIN

SURVEY CONTROL ORDER

Horizontal	_____
Vertical	_____

WISCONSIN COORDINATE SYSTEM

Corner	East (X)	North (Y)	Elevation (Z)	Zone
Control Sta. Name				

City, Village or Town Sparta

County of Monroe

CERTIFICATE

CERTIFIED LAND CORNER

No. 6

I, Harley A. Sime, do hereby certify that on the 14 day of January 1976, I found ~~(evidence)~~ (no evidence) of the N 1/4 corner of Section 3, T 17 N, R 4W, Fourth Principal Meridian, and I re-established said corner according to the Wisconsin Statutes as shown and described hereon.

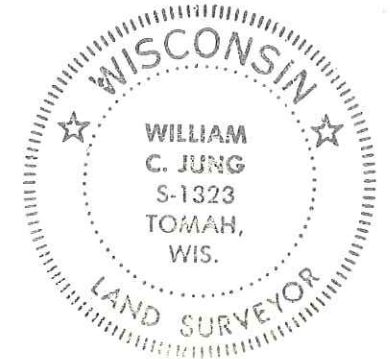
History of original corner establishment:

Description of corner evidence found:

Dated this 15 day of Jan. 1976.

Set on line and at a proportionate distance between the section corners.

Harley A. Sime  
County Surveyor  
Title



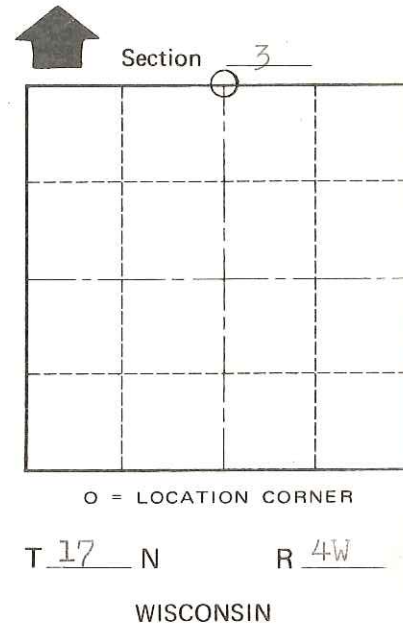
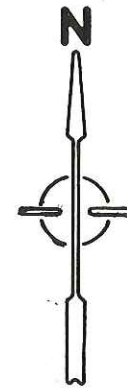
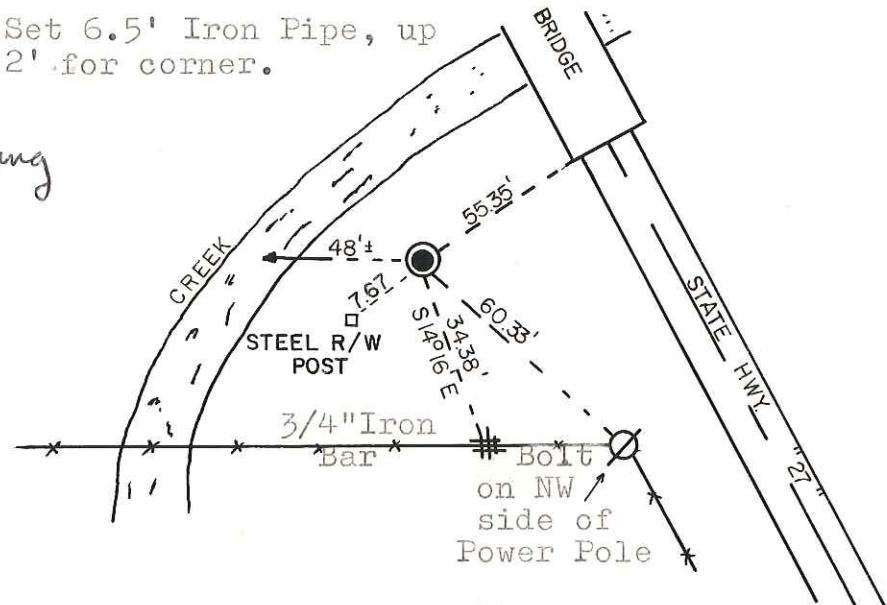
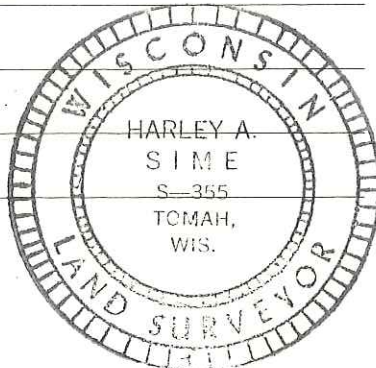
COUNTY SURVEYOR FORM NO. 1

Description of corner and witness monuments, references and accessories used to perpetuate the original or re-established location of this corner:  
Set 2 1/2" iron pipe.

Set 6.5' Iron Pipe, up 2' for corner.

Witnesses to corner location:

W.C. Jung - Crew Chief W.C. Jung  
C. Pietz



SURVEY CONTROL ORDER

Horizontal \_\_\_\_\_  
Vertical \_\_\_\_\_

WISCONSIN COORDINATE SYSTEM

Corner	East (X)	North (Y)	Elevation (Z)	Zone
Control Sta. Name				

City, Village or Town Sparta  
County of Monroe