

21804340000

I, Harley A. Sime, do hereby certify that on the 13 day of January 1976, I found (evidence) (~~no evidence~~) of the N.W. corner of Section 2, T17 N, R4W, Fourth Principal Meridian, and I re-established said corner according to the Wisconsin Statutes as shown and described hereon.

History of original corner establishment:

Description of corner evidence found:

Dated this 15 day of Jan. 1976.

Set by best available field evidence. Found what appears to have been an "ancient" tie post. Said post fits Sections 2 & 3 well, and the corner one mile North for distance and bearing. This corner also fits aerial photos, including the kink at the N¼ of Section 2.

Harley A. Sime
County Surveyor
Title

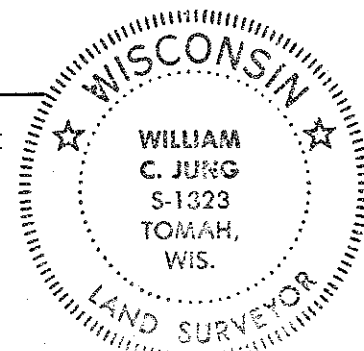
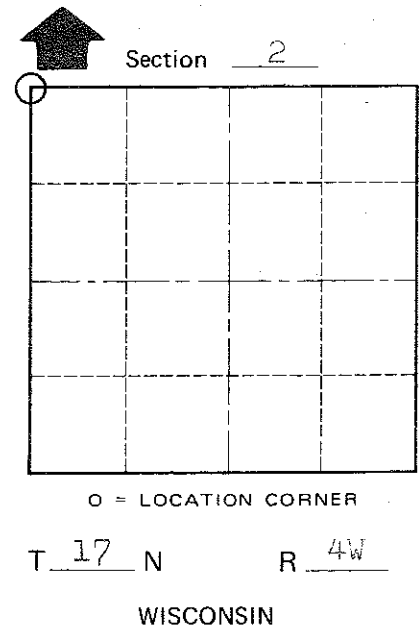
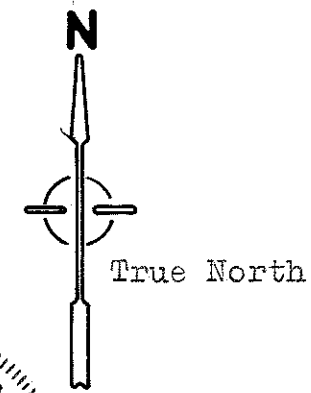
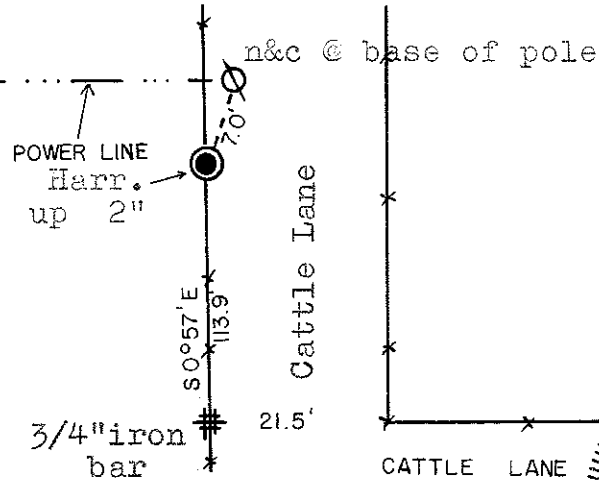
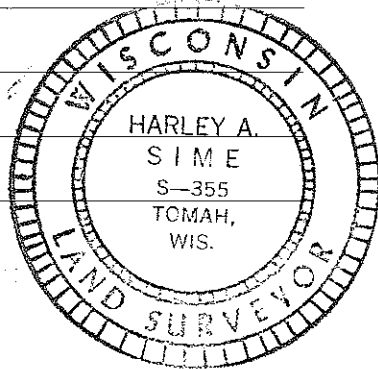
Description of corner and witness monuments, references and accessories used to perpetuate the original or re-established location of this corner:

Set Harrison on South side of old post, up 2".

Witnesses to corner location:

W.C. Jung - Crew Chief *W.C. Jung*

G. Sime



SURVEY CONTROL ORDER

Horizontal	_____
Vertical	_____

WISCONSIN COORDINATE SYSTEM

Corner	East (X)	North (Y)	Elevation (Z)	Zone
Control Sta. Name				

City, Village or Town Sparta

County of Monroe

COUNTY SURVEYOR FORM NO. 1