

21804352000

I, William C. Jung, do hereby certify that on the 20th day of August 19 82, I found (evidence) ~~(no evidence)~~ of the East 1/4 corner of Section 35, T 18 N, R 4 W Fourth Principal Meridian, and I re-established said corner according to the Wisconsin Statutes as shown and described hereon.

Dated this 24th day of Feb. 19 83.

William C. Jung
Deputy County Surveyor
Title

History of corner establishment since Original Government Survey

Duane Marten set an iron bar at the occupied corner in June of 1974.

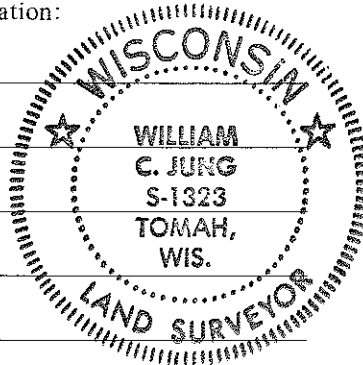
Description of corner evidence found:

I accepted the existing 1 1/4" iron bar at the occupied fence corner as the best available evidence of the original government corner. I removed Marten's iron bar and replaced it with a Harrison marker.

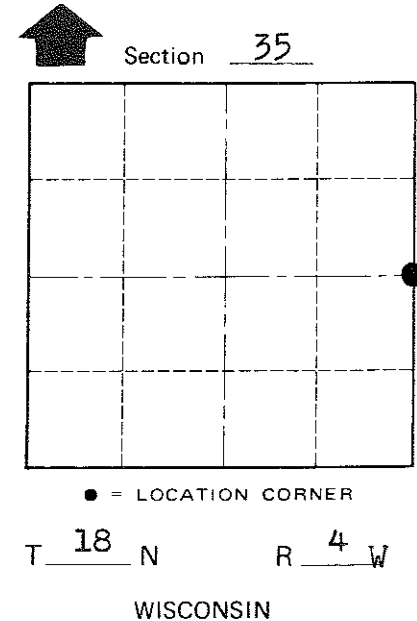
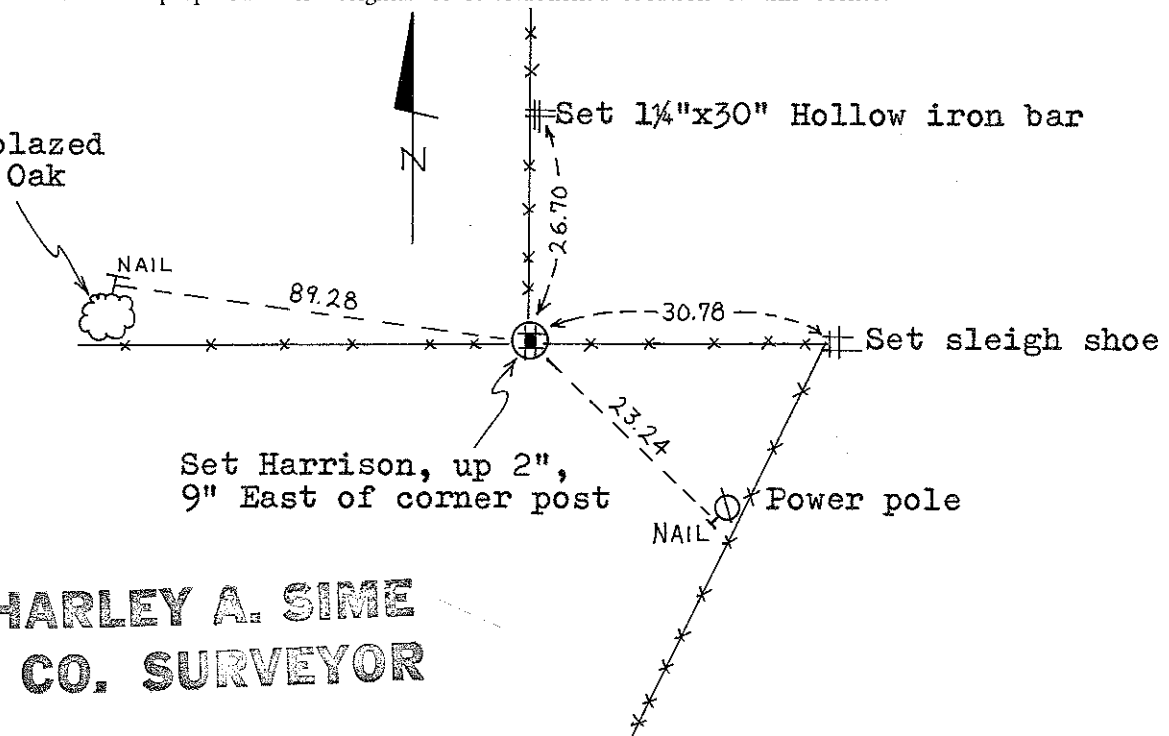
Description of corner and witness monuments, references and accessories used to perpetuate the original or re-established location of this corner:

Witnesses to corner location:

William Jung
Bryan Meyer



Double blazed
8" Jack Oak



Approved: **HARLEY A. SIME**
MONROE CO. SURVEYOR

SURVEY CONTROL ORDER

Horizontal	_____
Vertical	_____

WISCONSIN COORDINATE SYSTEM

Corner	East (X)	North (Y)	Elevation (Z)	Zone
Control Sta. Name				

~~City Village~~ or Town Sparta
County of Monroe

COUNTY SURVEYOR FORM NO. 1