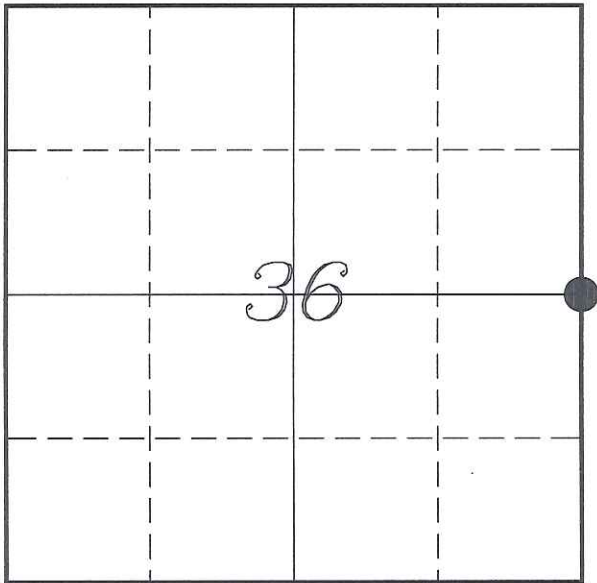


**U. S. PUBLIC LAND SURVEY MONUMENT RECORD**

**SECTION 36, T18N, R4W, TOWN OF SPARTA  
MONROE COUNTY, WISCONSIN**



MONROE COUNTY COORDINATE SYSTEM	
Northing	397459.174
Easting	631512.639
Datum	NAD 1983 (1991)
Elevation	
Datum	
TYPE OF LANDMARK:	
Set Harrison Monument	
BEARINGS ARE REFERENCED TO:	
Monroe County Coordinates	

**LOCATION OF LANDMARK**

Witnesses: Laurence E Johns III  
Al Hoff

Date: 6 April 2014

*Describe any record evidence, monument evidence, testimonial evidence or any other material evidence you considered and whether the monument was found or restored through acceptance of an obliterated evidence location.*

No bearing trees of record were located.

Found a 3/4" iron rod about 4' West of an existing fence line. This monument has been used in several surveys and '40' corners based on this corner have been set and used in additional surveys.

I accepted the 3/4" iron rod as the best available evidence of the original government corner and replaced it with a Harrison Monument.

*Describe or show any material discrepancy between the location of the restored corner and that of the corner previously restored or re-established.*

Uriah Biggs established this corner in November 1845.

Duane Marten was at this corner, in November 1973, during a survey in Section 31. He shows that he set a 3/4" iron rod at this corner.

Kim Pritzluf was at this corner, in July 1975, during a survey in Section 31. He shows that he found a 3/4" iron rod.

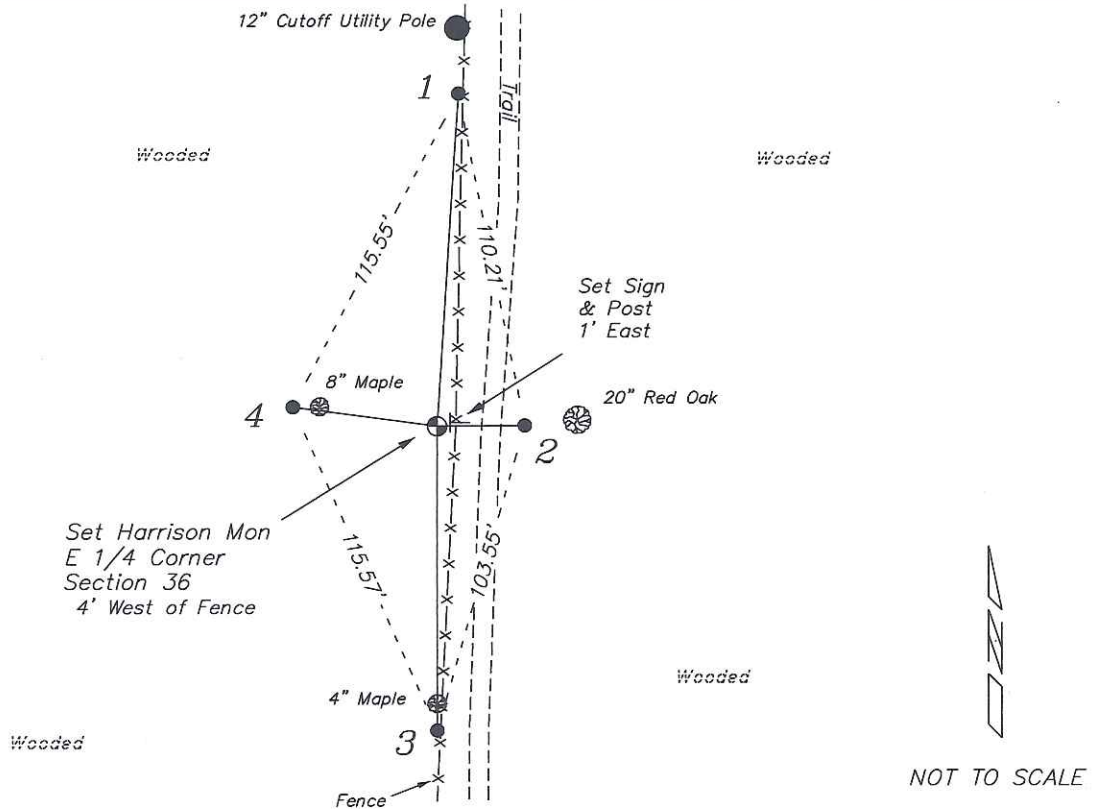
Mark Heidecke was at this corner in August 1979. He mentions using this corner to determine the location of the NE Corner of Section 36.

Norman Ray Hurlburt was at this corner, in August 1984, during a survey along the South line of Section 30. He shows that he found a 3/4" iron rod.

Scott Dunnum was at this corner, in July 2004, during a survey in Section 31. He shows that he found a 3/4" iron rod.

# RECORD OF DURABLE WITNESS MONUMENTS

NO	DESCRIPTION	BEARING	DISTANCE
1	Set 3/4" x 18" Iron Rod In Fence - 12' South of Cut Utility Pole	N 03°48'33" E	108.62'
2	Set 3/4" x 18" Iron Rod 12' West of a 20" Red Oak	N 89°29'12" E	28.57'
3	Set 3/4" x 18" Iron Rod In Fence Line - 2' South of a 4" Maple	S 00°00'31" E	99.28'
4	Set 3/4" x 18" Iron Rod 3' West of a 8" Maple	N 82°20'35" W	47.38'

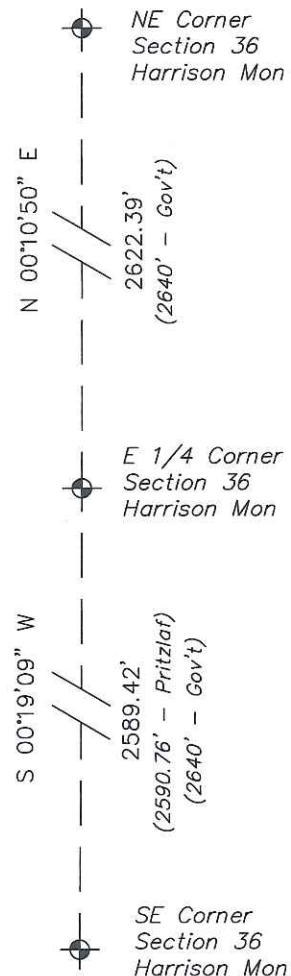


## PLAN VIEW DRAWING OF REFERENCE TIES

Map Showing Distance And Direction To Other Public Land Survey  
Corners Used For Re-Establishing The Corner



**Note:**  
Measurements were not made to the NE & SE Corners at this time. Distances shown are based on recorded information.



I, Laurence E Johns III RLS 2804, Registered Land Surveyor, hereby certify that the corner location shown on this record was determined by me or under my direction and control, and that this U.S. Public Land Survey Monument Record is correct and complete to the best of my knowledge and belief.

*Laurence E. Johns III*  
 Laurence E Johns III RLS 2804  
 Eagle Ridge Surveying  
 PO Box 213  
 Wilton, Wisconsin  
 7 April 2014