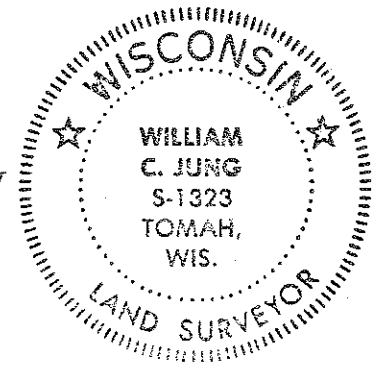


CERTIFICATE

CERTIFIED LAND CORNER

No. 2

21804360020



I, Harley A. Sime, do hereby certify that on the 24th day of April 19 75, I found (evidence) (~~no evidence~~) of the N 1/4 corner of Section 1, T 17 N, R 4W, Fourth Principal Meridian, and I re-established said corner according to the Wisconsin Statutes as shown and described hereon.

Dated this 14 day of Jan. 19 76.

Harley A. Sime
County Surveyor
Title

History of original corner establishment:

Description of corner evidence found:

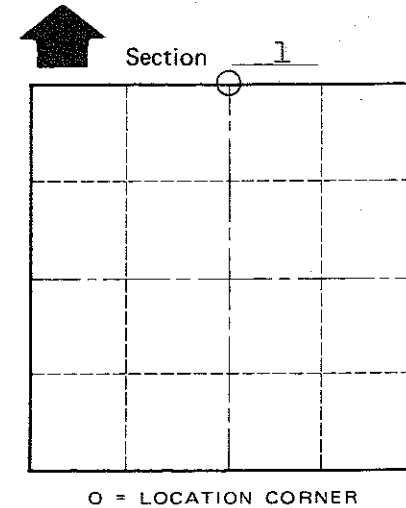
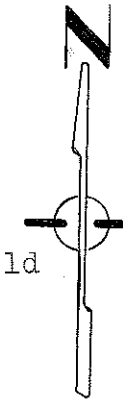
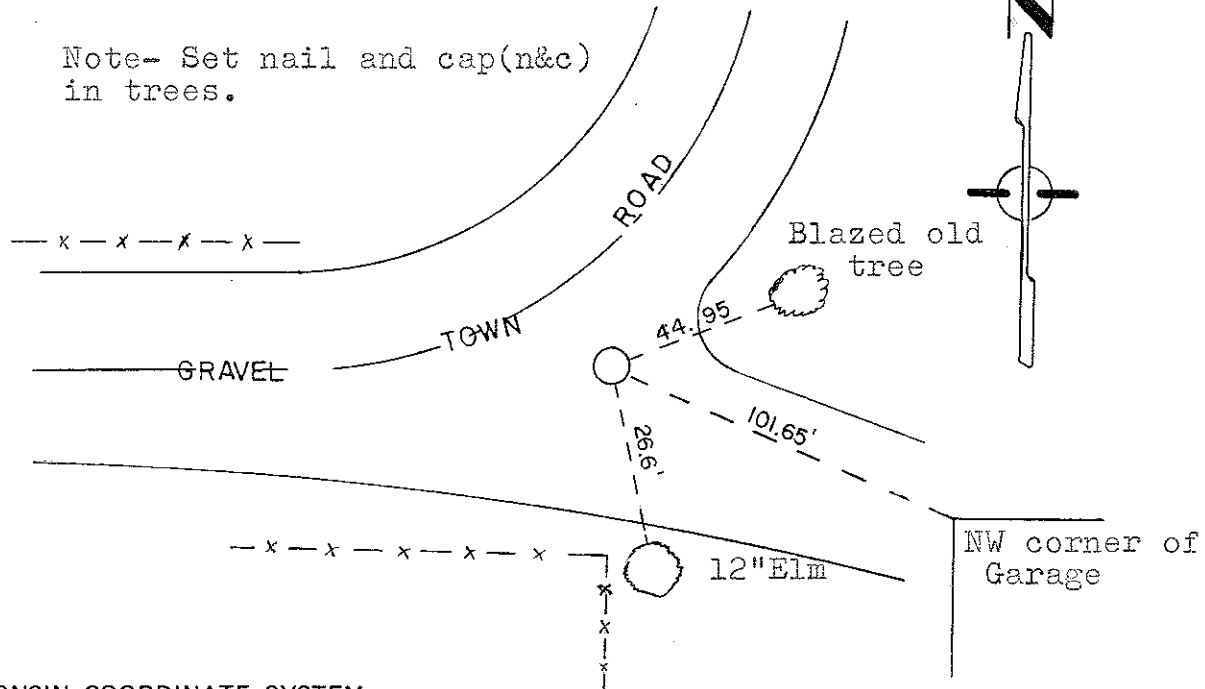
Removed existing 3/4"x24" iron bar used in a previous survey and replaced it with a Harrison marker.

Description of corner and witness monuments, references and accessories used to perpetuate the original or re-established location of this corner:
Set a Harrison marker, down 2" and 25' North of the fence corner.

Witnesses to corner location:

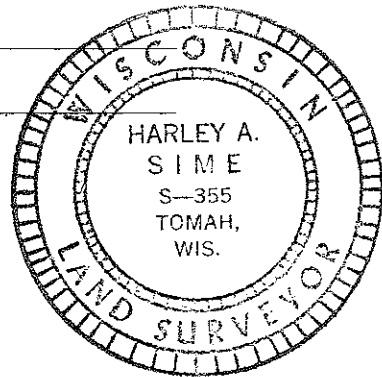
W.C. Jung- Crew Chief *W.C. Jung*
D. Malliet
A. Lueck

Note- Set nail and cap(n&c) in trees.



T 17 N R 4W

WISCONSIN



COUNTY SURVEYOR FORM NO. 1

SURVEY CONTROL ORDER

Horizontal _____
Vertical _____

WISCONSIN COORDINATE SYSTEM

Corner	East (X)	North (Y)	Elevation (Z)	Zone
Control Sta. Name				

City, Village or Town Sparta

County of Monroe