

CERTIFICATE

CERTIFIED LAND CORNER

No. 1

21804360000

I, Harley A. Sime, do hereby certify that on the 1st day of July 1975, I found (evidence) (~~no evidence~~) of the N.E. corner of Section 1, T 17 N, R 4 W Fourth Principal Meridian, and I re-established said corner according to the Wisconsin Statutes as shown and described hereon.

Dated this 12th day of Jan. 1976.

Harley A. Sime
County Surveyor
Title

History of original corner establishment:

Description of corner evidence found:

Found a 1 1/2" iron pipe used in previous surveys. Removed and replaced with a Harrison marker.

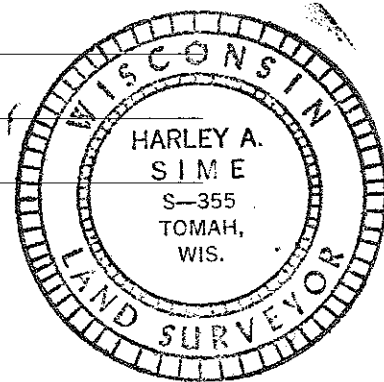
Description of corner and witness monuments, references and accessories used to perpetuate the original or re-established location of this corner:
Set a Harrison in the fence corner.

Witnesses to corner location:

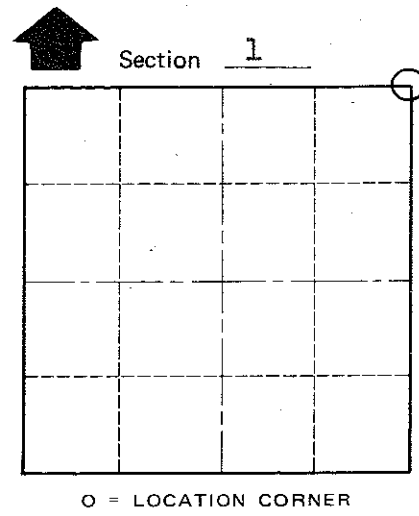
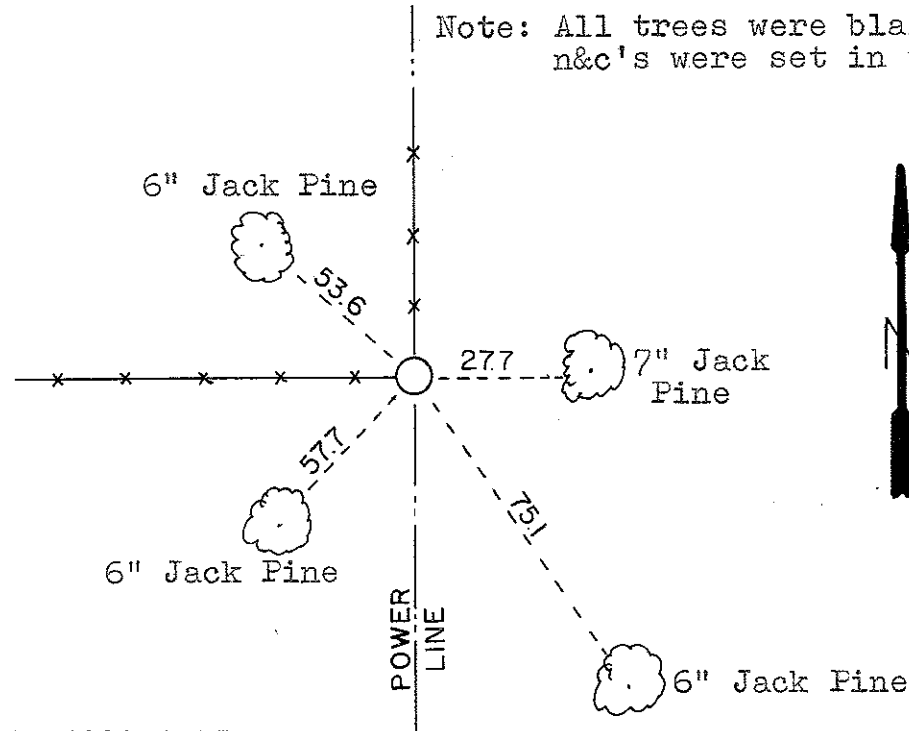
D. Malliet - Crew Chief

A. Lueck

T. Jeatran



Note: All trees were blazed and n&c's were set in them.



T 17 N R 4 W
WISCONSIN

COUNTY SURVEYOR FORM NO. 1

SURVEY CONTROL ORDER

Horizontal	_____
Vertical	_____

WISCONSIN COORDINATE SYSTEM

Corner	East (X)	North (Y)	Elevation (Z)	Zone
Control Sta. Name				

City, Village or ~~Town~~ Sparta

County of Monroe