

21804102000

I, William C. Jung, do hereby certify that on the 26th day of October 1985 I found (evidence) ~~(no evidence)~~ of the West 1/4 corner of Section 11, T 18 N, R 4W, Fourth Principal Meridian, and I re-established said corner according to the Wisconsin Statutes as shown and described hereon.

Dated this 16th day of Nov. 1985.

William C. Jung  
 Registered Land Surveyor 1323  
 Title

History of corner establishment since Original Government Survey

No known recorded history since the original government survey.

Description of corner evidence found:

I accepted the East-West direction of the existing occupied line fence, and then set a Harrison marker at the corner, on line with the section corners and in the fence. It should be noted that after my remonumentation of Section 11 and the proration thereof, the existing fence corner at the C1/16NW fits the true corner within about 1' both directions.

COUNTY SURVEYOR FORM NO. 1

Description of corner and witness monuments, references and accessories used to perpetuate the original or re-established location of this corner:

Witnesses to corner location:

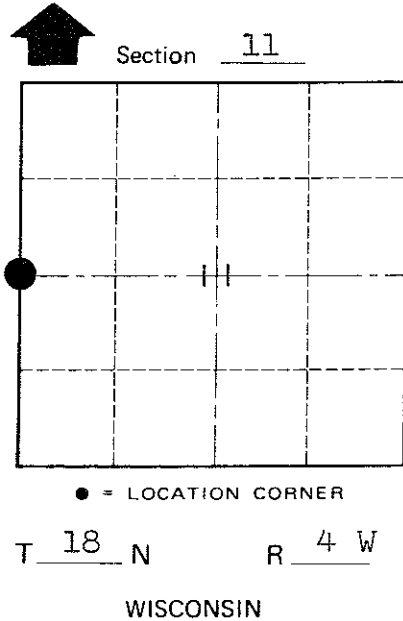
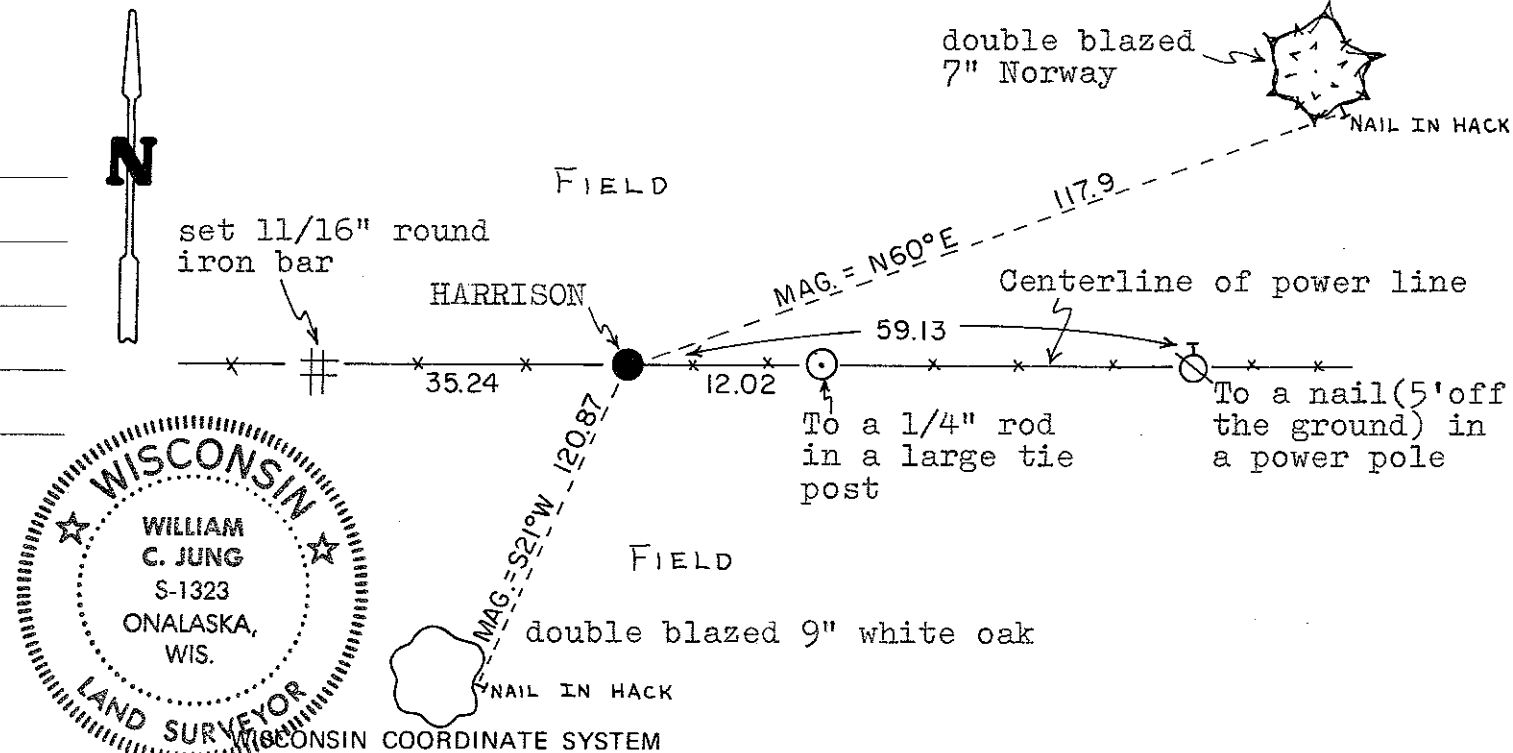
William C. Jung  
Bryan Meyer

Approved: Harley Sime  
 County Surveyor

SURVEY CONTROL ORDER

Horizontal	_____
Vertical	_____

Corner	East (X)	North (Y)	Elevation (Z)	Zone
Control Sta. Name				



City, Village or Town Little Falls  
 County of Monroe  
Wisconsin