

21804090020

I, William C. Jung, do hereby certify that on the 31st day of October 19 78, I found (evidence) (no evidence) of the NW corner of Section 16, T 18 N, R 4 W Fourth Principal Meridian, and I re-established said corner according to the Wisconsin Statutes as shown and described hereon.

Dated this 5th day of Jan. 19 79.

William C. Jung, R.L.S. 1323

Crew Chief, County Surveyor's
Title Office

History of original corner establishment:

Schroeder (probably Kenyon) was here in April of 1893. The highway map showed the corner to be 44' West of the Centerline. (However w could not match this distance)

UPDATE: Gary Dechant used this corner in his August 1987 survey.

Description of corner evidence found:

Set the corner in the occupied section line and at a distance from the NW corner that best fits the field evidence and Schroeder's notes.

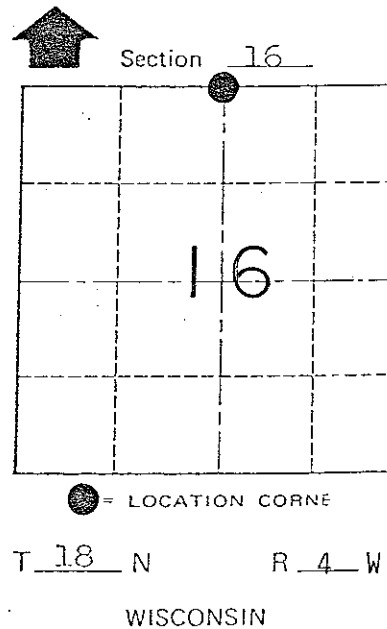
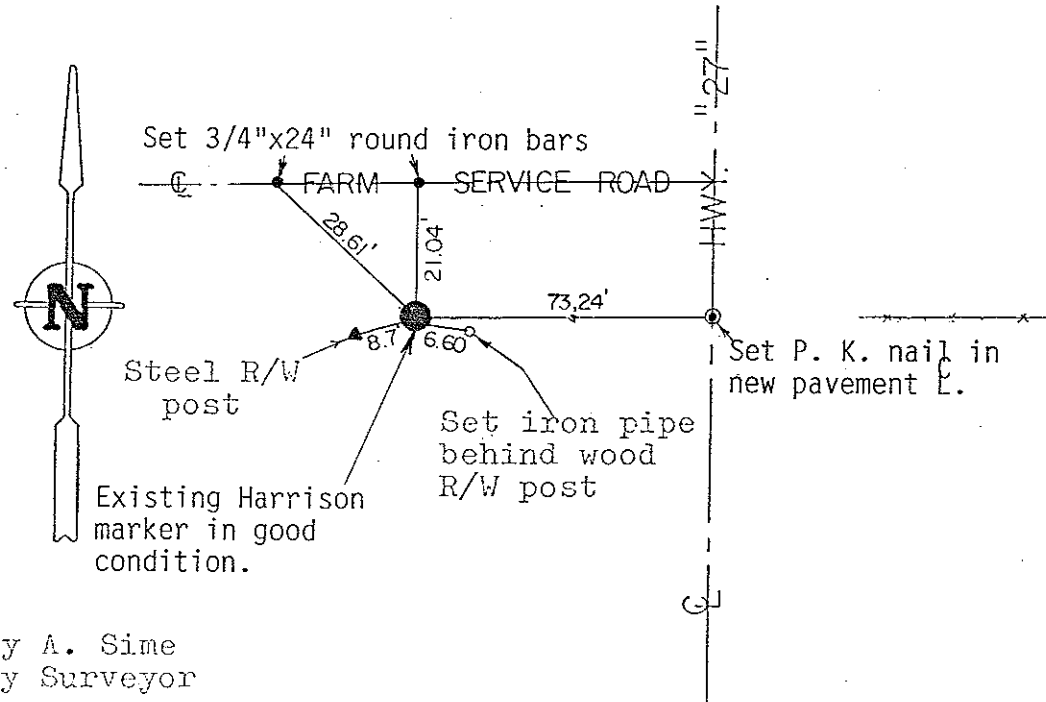
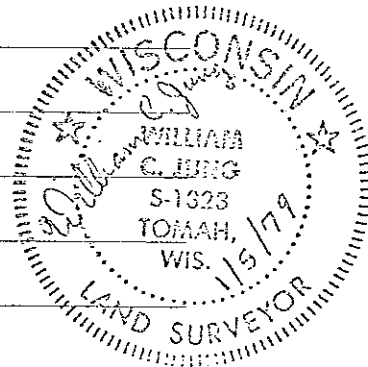
UPDATE: Checked this corner to be sure it would be safe during a road construction project along S.T.H. "27". Following the project we found the marker to be in good condition and got the additional ties shown below, on August 11, 1989 (Crew: Bryan Meyer & John Kenworthy).

Description of corner and witness monuments, references and accessories used to perpetuate the original or re-established location of this corner:

Witnesses to corner location:

W. Jung

G. Dechant



COUNTY SURVEYOR FORM NO. 1

SURVEY CONTROL ORDER

Horizontal	_____
Vertical	_____

Approved by: Harley A. Sime
County Surveyor

WISCONSIN COORDINATE SYSTEM

Corner	East (X)	North (Y)	Elevation (Z)	Zone
Control Sta. Name				

City, Village or Town Little Falls

County of Monroe

I, William C. Jung, do hereby certify that on the 31st day of October 19 78, I found (evidence) (no evidence) of the NW corner of Section 16, T18 N, R 4 W Fourth Principal Meridian, and I re-established said corner according to the Wisconsin Statutes as shown and described hereon.

Dated this 5th day of Jan. 1979.

William C. Jung, R.L.S. 1323

Crew Chief, County Surveyor's
title
 Office

History of original corner establishment:

The highway map showed the corner to be 44' West of the Centerline. (However we could not match this distance)
 Schroeder was at this corner in April of 1893.

Description of corner evidence found:

Set the corner in the occupied section line and at a distance from the NW corner that best fits the field evidence and Schroeder's notes.

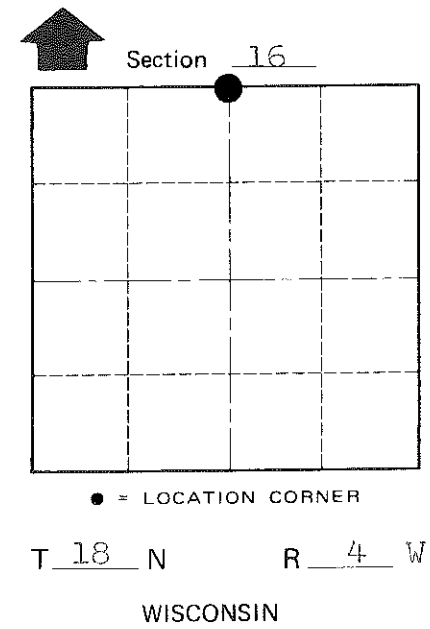
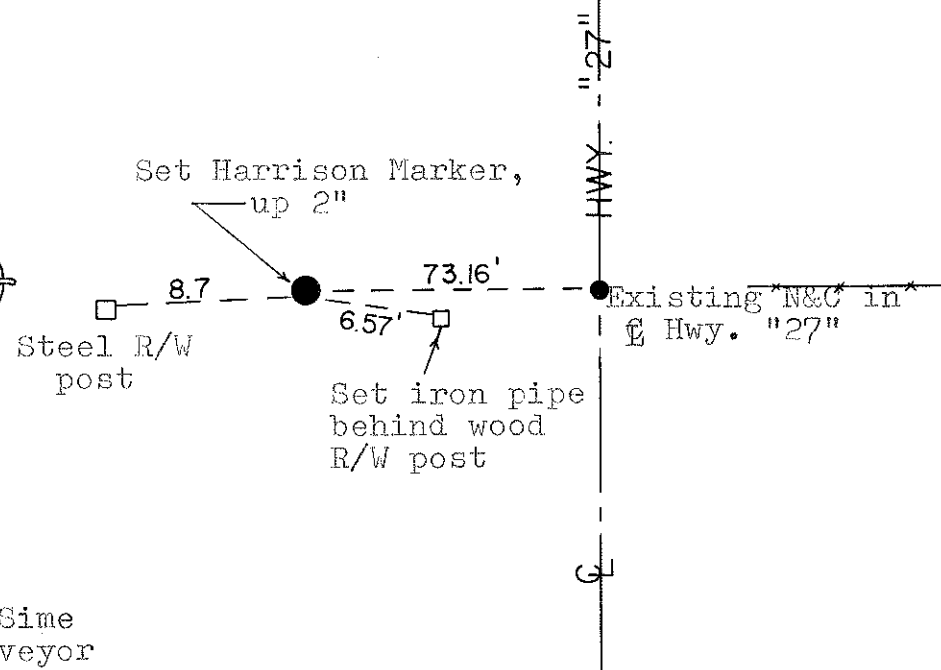
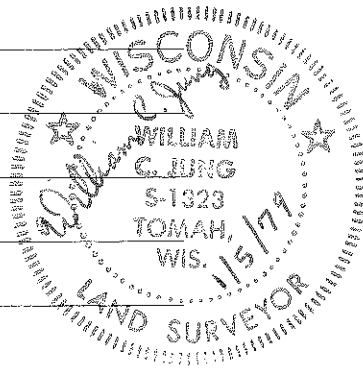
COUNTY SURVEYOR FORM NO. 1

Description of corner and witness monuments, references and accessories used to perpetuate the original or re-established location of this corner:

Witnesses to corner location:

W. Jung

G. Dechant



SURVEY CONTROL ORDER

Horizontal	_____
Vertical	_____

Approved by: Harley A. Sime
 County Surveyor

WISCONSIN COORDINATE SYSTEM

Corner	East (X)	North (Y)	Elevation (Z)	Zone
Control Sta. Name				

City, Village or Town Little Falls
 County of Monroe